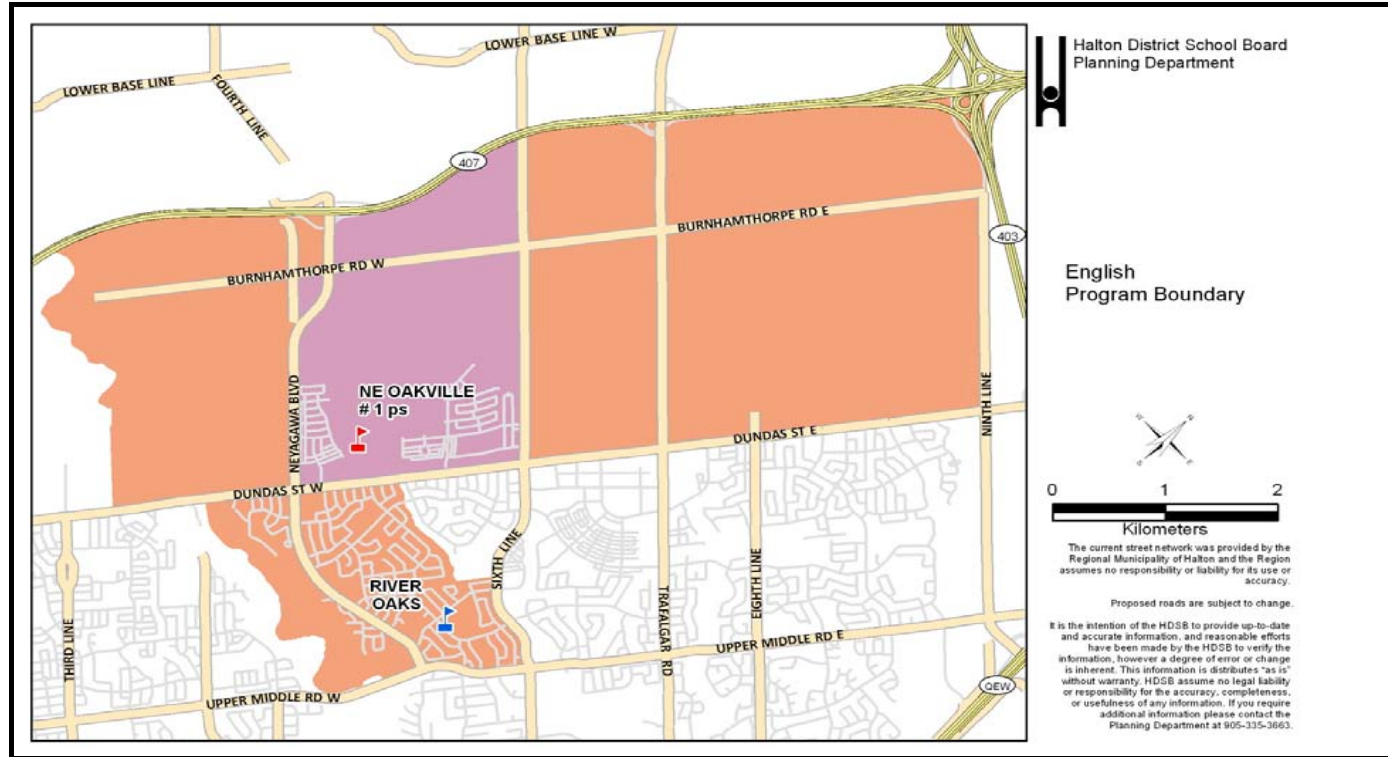
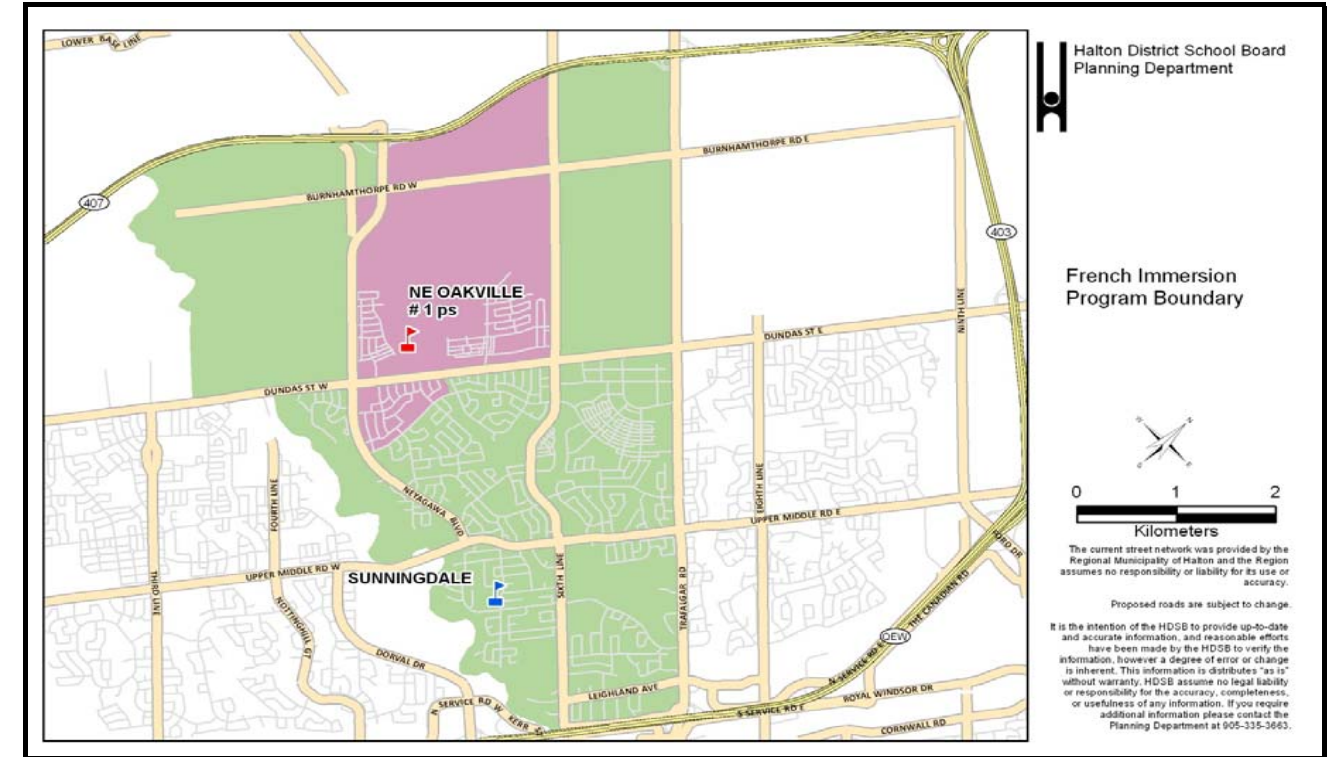


Scenario 7



Scenario 7



	Program	OTG	Port	Total	2014	2015	2016	2017	2018	2019	2020	2021	2022	2023	2024		
River Oaks PS	ENG	636	12	912	731	482	482	536	622	772	944	1100	1268	1440	1619		
	FI				0	0	0	0	0	0	0	0	0	0	0	0	0
	Total				731	482	482	536	622	772	944	1100	1268	1440	1619		
	River Oaks Utilization				-95	154	154	100	14	-136	-308	-464	-632	-804	-983		
Percent Utilization				115%	76%	76%	84%	98%	121%	148%	173%	199%	226%	255%			
Sunningdale PS	ENG	613	10	843	0	0	0	0	0	0	0	0	0	0	0		
	FI				813	646	654	694	715	728	742	742	744	752	755		
	Total				813	646	654	694	715	728	742	742	744	752	755		
	Sunningdale Utilization				-200	-33	-41	-81	-102	-115	-129	-129	-131	-139	-142		
Percent Utilization				133%	105%	107%	113%	117%	119%	121%	121%	121%	123%	123%			
N of Dundas (between Neyagawa & Sixth Line)	ENG	-	-	-	-	379	502	533	579	604	675	794	868	932	1003		
	FI				-	155	202	226	251	275	299	326	341	348	354		
	Sub-Total				0	534	704	759	830	879	974	1120	1209	1280	1357		
N of Dundas (between Sixth Line & Trafalgar)	ENG	-	-	-	-	0	0	0	0	0	0	0	0	0	0		
	FI				-	0	0	0	0	0	0	0	0	0	0		
	Sub-Total				0	0	0	0	0	0	0	0	0	0	0		
N of Dundas (east of Trafalgar)	ENG	-	-	-	-	0	0	0	0	0	0	0	0	0	0		
	FI				-	0	0	0	0	0	0	0	0	0	0		
	Sub-Total				0	0	0	0	0	0	0	0	0	0	0		
N of Dundas (west of Neyagawa)	ENG	-	-	-	-	0	0	0	0	0	0	0	0	0	0		
	FI				-	0	0	0	0	0	0	0	0	0	0		
	Sub-Total				0	0	0	0	0	0	0	0	0	0	0		
S of Dundas (down to River Glen Blvd between Neyagawa & Munn's Creek)	ENG	-	-	-	-	0	0	0	0	0	0	0	0	0	0		
	FI				-	76	87	87	88	93	93	88	88	88	88		
	Sub-Total				0	76	87	87	88	93	93	88	88	88	88		
NE Oakville #1 ps	ENG	776	12	1052	-	379	502	533	579	604	675	794	868	932	1003		
	FI				-	231	289	313	339	368	392	414	429	436	442		
	Total				0	610	791	846	918	972	1067	1208	1297	1368	1445		
	NE Oakville #1 Utilization				0	166	-15	-70	-142	-196	-291	-432	-521	-592	-669		
Percent Utilization				0%	79%	102%	109%	118%	125%	138%	156%	167%	176%	186%			
Study Total		2025	34	2807	1544	1738	1927	2076	2255	2472	2753	3050	3309	3560	3819		

River Oaks PS is a JK-8 ENG school

English boundary JK-8 includes area north of Dundas Street West (2 parts):

Part 1

- East: Neyagawa Blvd
- West: 16 Mile Creek
- North: Highway 407
- South: Dundas Street West

Part 2

- East: Ninth Line
- West: Sixth Line
- North: Highway 407
- South: Dundas Street West

Sunningdale PS is a 1-8 FI school

French Immersion boundary 1-8 includes area north of Dundas Street West (2 parts):

Part 1

- East: Neyagawa Blvd
- West: 16 Mile Creek
- North: Highway 407
- South: Dundas Street West

Part 2

- East: Trafalgar Road
- West: Sixth Line
- North: Highway 407
- South: Dundas Street West

NE Oakville #1 ps opens September 2015 as a JK-7 ENG and 1-7 FI school; grade 8 ENG and FI will be added September 2016

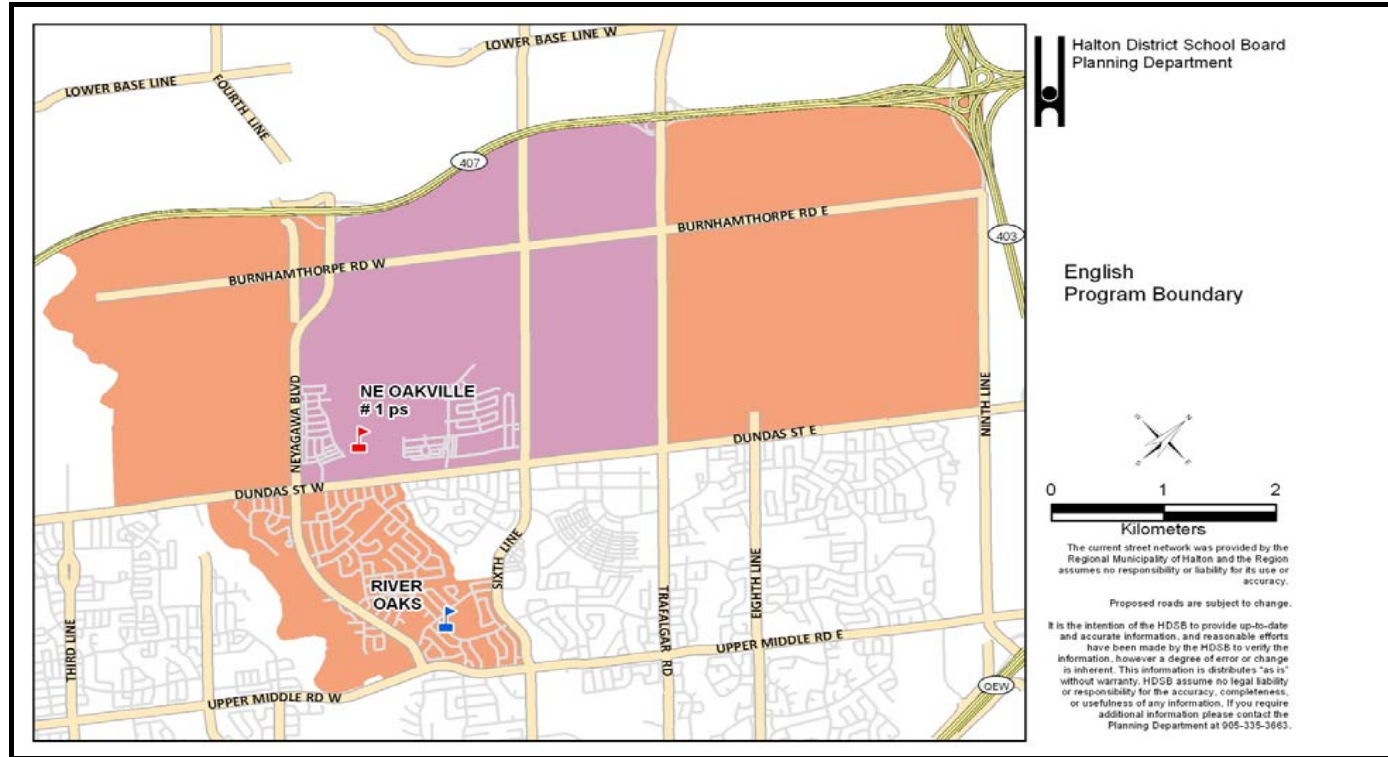
English boundary JK-8 and French Immersion boundary 1-8 is:

- East: Sixth Line
- West: Neyagawa Blvd
- North: Highway 407
- South: Dundas Street West

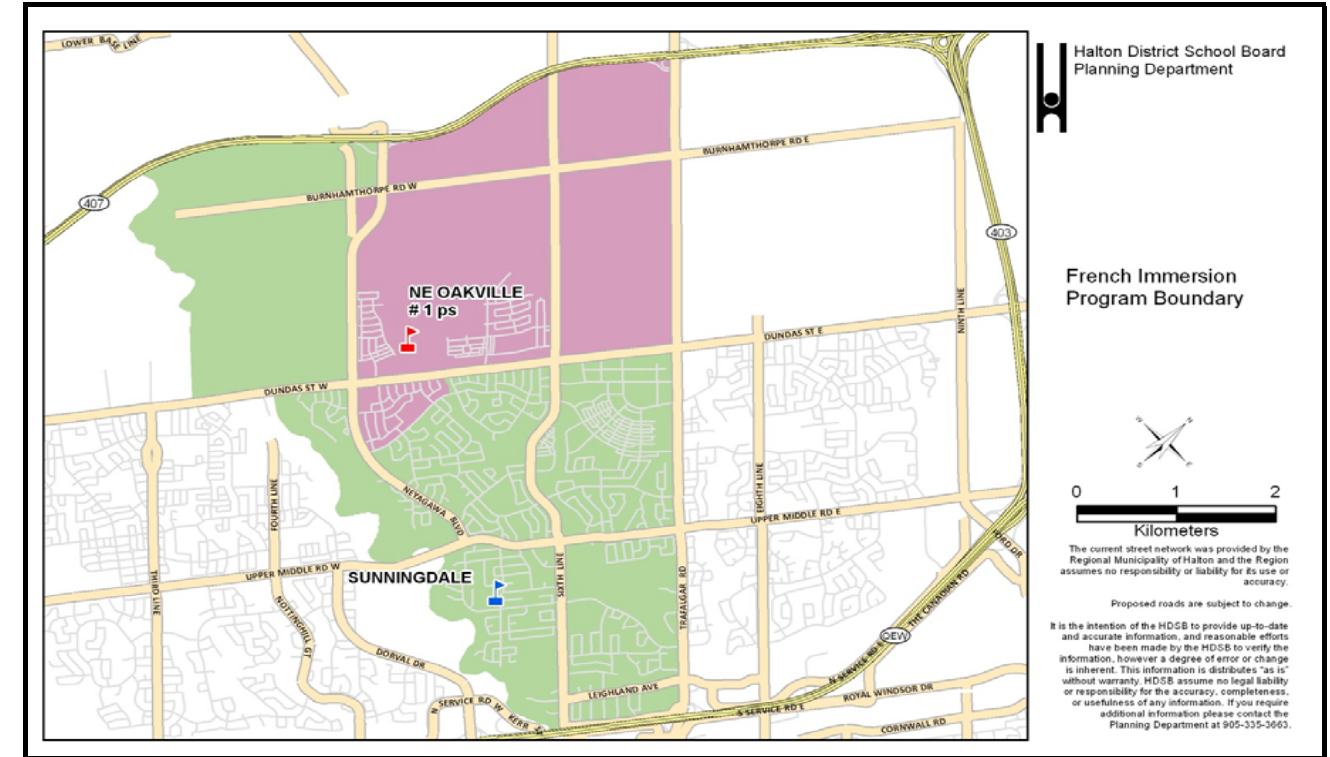
French Immersion boundary 1-8 also includes an area south of Dundas Street West:

- East: Munn's Creek
- West: Neyagawa Blvd
- North: Dundas Street West
- South: River Glen Blvd

Scenario 8



Scenario 8



	Program	OTG	Port	Total	2014	2015	2016	2017	2018	2019	2020	2021	2022	2023	2024
River Oaks PS	ENG				731	482	418	395	389	433	496	563	659	762	874
	FI	636	12	912	0	0	0	0	0	0	0	0	0	0	0
	Total				731	482	418	395	389	433	496	563	659	762	874
	River Oaks Utilization				-95	154	218	241	247	203	140	73	-23	-126	-238
	Percent Utilization				115%	76%	66%	62%	61%	68%	78%	89%	104%	120%	137%
Sunningdale PS	ENG				0	0	0	0	0	0	0	0	0	0	0
	FI	613	10	843	813	646	646	675	685	682	685	674	668	665	660
	Total				813	646	646	675	685	682	685	674	668	665	660
	Sunningdale Utilization				-200	-33	-33	-62	-72	-69	-72	-61	-55	-52	-47
	Percent Utilization				133%	105%	105%	110%	112%	111%	112%	110%	109%	108%	108%
N of Dundas (between Neyagawa & Sixth Line)	ENG				-	379	502	533	579	604	675	794	868	932	1003
	FI	-	-	-	-	155	202	226	251	275	299	326	341	348	354
	Sub-Total				0	534	704	759	830	879	974	1120	1209	1280	1357
N of Dundas (between Sixth Line & Trafalgar)	ENG				-	0	64	141	233	339	448	537	609	678	745
	FI	-	-	-	-	0	8	19	30	46	57	68	76	87	95
	Sub-Total				0	0	72	160	263	385	505	605	685	765	840
N of Dundas (east of Trafalgar)	ENG				-	0	0	0	0	0	0	0	0	0	0
	FI	-	-	-	-	0	0	0	0	0	0	0	0	0	0
	Sub-Total				0	0	0	0	0	0	0	0	0	0	0
N of Dundas (west of Neyagawa)	ENG				-	0	0	0	0	0	0	0	0	0	0
	FI	-	-	-	-	0	0	0	0	0	0	0	0	0	0
	Sub-Total				0	0	0	0	0	0	0	0	0	0	0
S of Dundas (down to River Glen Blvd between Neyagawa & Munn's Creek)	ENG				-	0	0	0	0	0	0	0	0	0	0
	FI	-	-	-	-	76	87	87	88	93	93	88	88	88	88
	Sub-Total				0	76	87	87	88	93	93	88	88	88	88
NE Oakville #1 ps	ENG				-	379	566	674	812	943	1123	1331	1477	1610	1748
	FI	776	12	1052	-	231	297	332	369	414	449	482	505	523	537
	Total				0	610	863	1006	1181	1357	1572	1813	1982	2133	2285
	NE Oakville #1 Utilization				0	166	-87	-230	-405	-581	-796	-1037	-1206	-1357	-1509
	Percent Utilization				0%	79%	111%	130%	152%	175%	203%	234%	255%	275%	294%
Study Total		2025	34	2807	1544	1738	1927	2076	2255	2472	2753	3050	3309	3560	3819

River Oaks PS is a JK-8 ENG school

English boundary JK-8 includes area north of Dundas Street West (2 parts):

Part 1

- East: Neyagawa Blvd
- West: 16 Mile Creek
- North: Highway 407
- South: Dundas Street West

Part 2

- East: Ninth Line
- West: Sixth Line
- North: Highway 407
- South: Dundas Street West

Sunningdale PS is a 1-8 FI school

French Immersion boundary 1-8 includes area north of Dundas Street West:

- East: Neyagawa Blvd
- West: 16 Mile Creek
- North: Highway 407
- South: Dundas Street West

NE Oakville #1 ps opens September 2015 as a JK-7 ENG and 1-7 FI school; grade 8 ENG and FI will be added September 2016

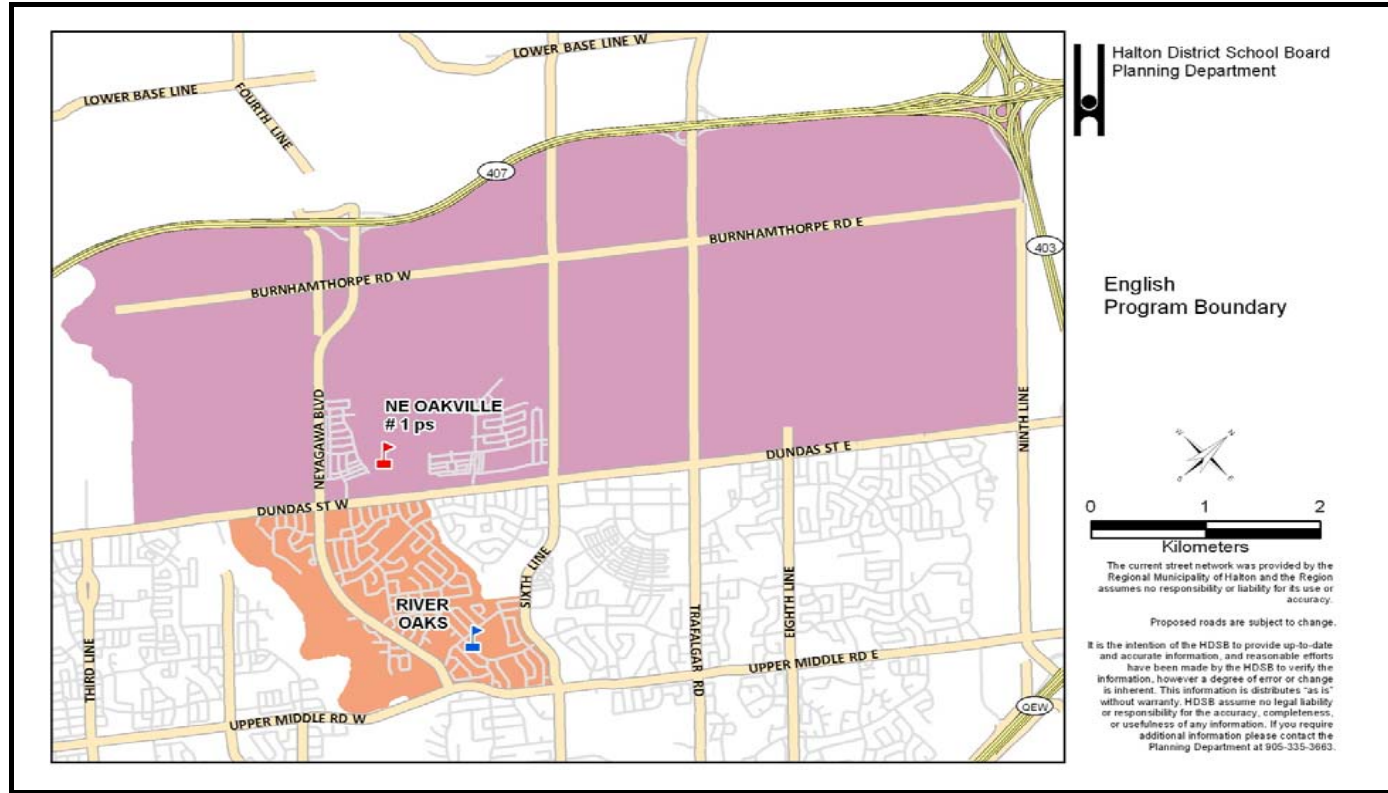
English boundary JK-8 and French Immersion boundary 1-8 is:

- East: Trafalgar Road
- West: Neyagawa Blvd
- North: Highway 407
- South: Dundas Street West

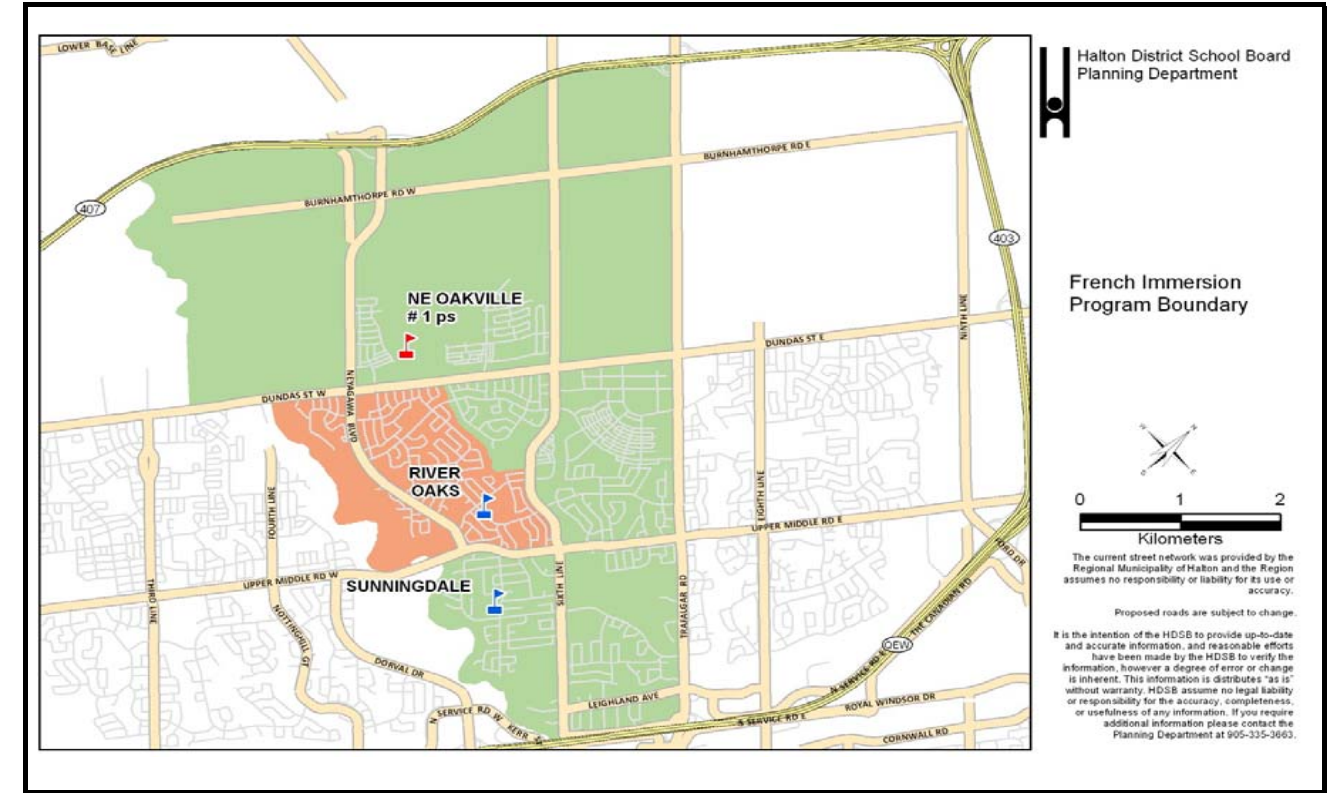
French Immersion boundary 1-8 also includes an area south of Dundas Street West:

- East: Munn's Creek
- West: Neyagawa Blvd
- North: Dundas Street West
- South: River Glen Blvd

Scenario 9



Scenario 9



	Program	OTG	Port	Total	2014	2015	2016	2017	2018	2019	2020	2021	2022	2023	2024
River Oaks PS	ENG	636	12	912	731	471	398	364	337	309	283	261	247	244	241
	FI				0	227	262	273	276	281	292	287	291	288	286
	Total				731	698	660	637	613	590	575	548	538	532	527
	River Oaks Utilization				-95	-62	-24	-1	23	46	61	88	98	104	109
Percent Utilization				115%	110%	104%	100%	96%	93%	90%	86%	85%	84%	83%	
Sunningdale PS	ENG	613	10	843	0	0	0	0	0	0	0	0	0	0	0
	FI				813	644	669	719	759	793	817	845	856	872	884
	Total				813	644	669	719	759	793	817	845	856	872	884
	Sunningdale Utilization				-200	-31	-56	-106	-146	-180	-204	-232	-243	-259	-271
Percent Utilization				133%	105%	109%	117%	124%	129%	133%	138%	140%	142%	144%	
N of Dundas (between Neyagawa & Sixth Line)	ENG	-	-	-	-	396	534	579	638	676	760	887	972	1037	1106
	FI	-	-	-	-	0	0	0	0	0	0	0	0	0	
	Sub-Total				0	396	534	579	638	676	760	887	972	1037	1106
N of Dundas (between Sixth Line & Trafalgar)	ENG	-	-	-	-	0	64	141	233	339	448	537	609	678	745
	FI	-	-	-	-	0	0	0	0	0	0	0	0	0	
	Sub-Total				0	0	64	141	233	339	448	537	609	678	745
N of Dundas (east of Trafalgar)	ENG	-	-	-	-	0	0	0	12	74	153	233	334	441	557
	FI	-	-	-	-	0	0	0	0	0	0	0	0	0	
	Sub-Total				0	0	0	0	12	74	153	233	334	441	557
N of Dundas (west of Neyagawa)	ENG	-	-	-	-	0	0	0	0	0	0	0	0	0	0
	FI	-	-	-	-	0	0	0	0	0	0	0	0	0	
	Sub-Total				0	0	0	0	0	0	0	0	0	0	0
NE Oakville #1 ps	ENG	776	12	1052	-	396	598	720	883	1089	1361	1657	1915	2156	2408
	FI				-	0	0	0	0	0	0	0	0	0	0
	Total				0	396	598	720	883	1089	1361	1657	1915	2156	2408
	NE Oakville #1 Utilization				0	380	178	56	-107	-313	-585	-881	-1139	-1380	-1632
Percent Utilization				0%	51%	77%	93%	114%	140%	175%	214%	247%	278%	310%	
Study Total		2025	34	2807	1544	1738	1927	2076	2255	2472	2753	3050	3309	3560	3819

River Oaks PS is a JK-8 ENG school; River Oaks PS will open with a 1-7 FI program September 2015; grade 8 FI will be added September 2016
 There is no change to the English boundary JK-8
 The French Immersion boundary 1-8 will be the same as the current English boundary

Sunningdale PS is a 1-8 FI school
 French Immersion boundary 1-8 south of Dundas Street West has changed with the creation of the River Oaks FI boundary.
 French Immersion boundary 1-8 includes area north of Dundas Street West:

- East: Trafalgar Road
- West: 16 Mile Creek
- North: Highway 407
- South: Dundas Street West

NE Oakville #1 ps opens September 2015 as a JK-7 ENG school; grade 8 ENG will be added September 2016
 English boundary JK-8 is:

- East: Ninth Line
- West: 16 Mile Creek
- North: Highway 407
- South: Dundas Street West