



Halton District School Board

David Euale, *Director of Education*

Kelly Amos, *Chair of the Board*

Dear Parent/Guardian:

At the February 18, 2015 meeting of the Board, Trustees deliberated on the NE Oakville #1 elementary school boundaries. As a result, Trustees approved motion 15012, establishing the boundary for the 2015-2016 school year as follows:

NE Oakville #1 Public School:

Program offered in 2015-16: Junior Kindergarten - Grade 7 English and Grade 1 - 7 French Immersion. Grade 8 English and French Immersion will be added September 2016

The English boundary is:

- East: Sixth Line
- West: Neyagawa Blvd
- North: Highway 407
- South: Dundas Street

The French Immersion boundary north of Dundas Street is:

- East: Trafalgar Road
- West: 16 Mile Creek
- North: Highway 407
- South: Dundas Street

The French Immersion boundary south of Dundas Street is:

- East: Munn's Creek
- West: 16 Mile Creek
- North: Highway 407
- South: River Glen Blvd

River Oaks Public School:

Program offered in 2015-16: Junior Kindergarten – Grade 8 English

The English boundary Junior Kindergarten – Grade 8 south of Dundas Street is unchanged.

The English boundary Junior Kindergarten – Grade 8 includes areas north of Dundas Street (2 parts):

Part 1

- East: Neyagawa Road
- West: 16 Mile Creek
- North: Highway 407
- South: Dundas Street

Part 2

- East: Ninth Line
- West: Sixth Line
- North: Highway 407
- South: Dundas Street

Note: All students currently in grade 7 at River Oaks PS who reside north of Dundas Street will remain at River Oaks PS for their grade 8 year.

Sunningdale Public School:

Program offered in 2015-16: Grade 1 - 8 French Immersion.

The FI boundary for grades 1-8 south of Dundas Street has changed with the creation of the NE Oakville #1 FI boundary.

***Note:** All students currently in grade 7 at Sunningdale PS who reside north of Dundas Street or live in the area south of Dundas St down to River Glen Blvd between 16 Mile Creek and Munn's Creek will remain at Sunningdale PS for their grade 8 year.*

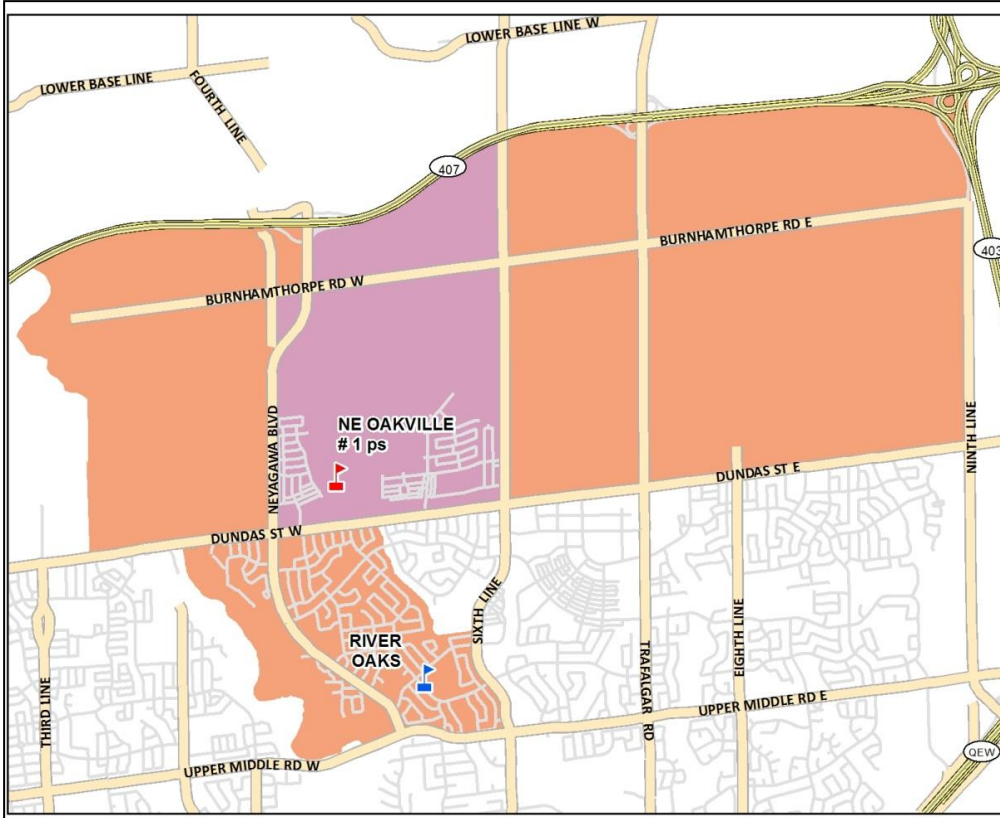
Please refer to the attached map of the new NE Oakville #1 Public School.

If your child(ren) is scheduled to move schools for the 2015-2016 school year as a result of the boundary changes, they will automatically be registered at their newly assigned school and their records will be transferred accordingly. Therefore, there is no need for you to register your child at their newly assigned school.

The next step in the boundary review process is the Integration process, which will take place in the Spring. The purpose is to ensure that the integration of students into their new school(s) is achieved in a way that is positive and supportive for the students and parents of the respective school communities and neighbourhoods.

If you have any questions about your child's school placement for the 2015-16 school year, please contact your child's school.

Scenario 10c



Halton District School Board
Planning Department

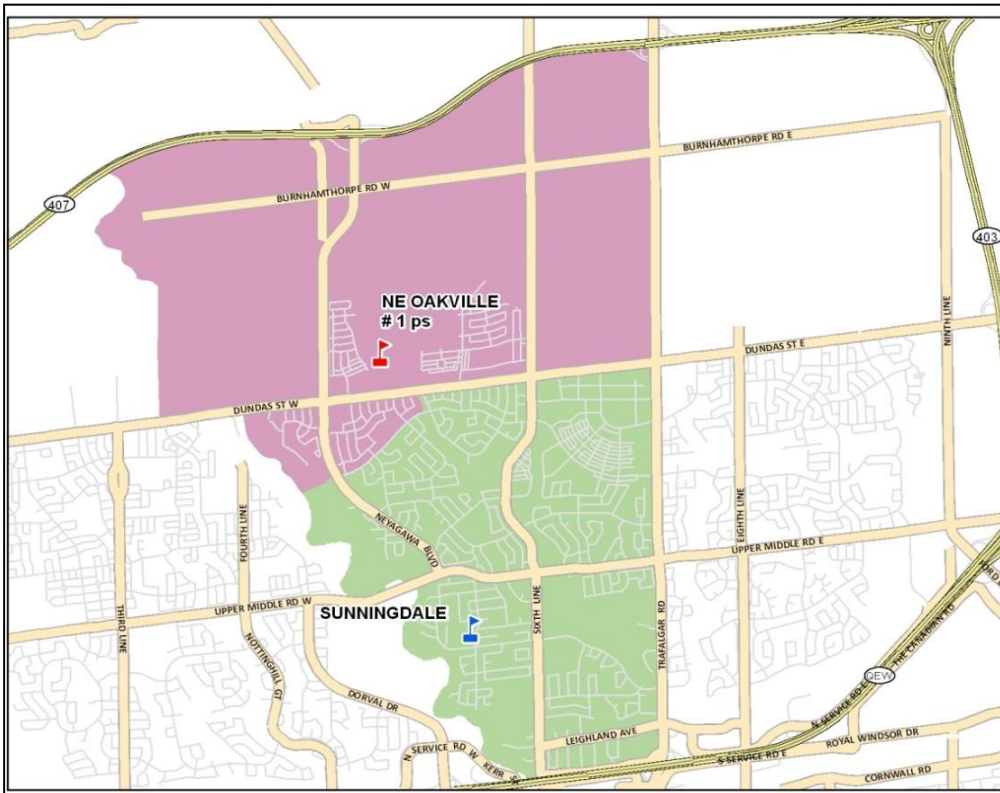
English Program Boundary



The current street network was provided by the Regional Municipality of Halton and the Region assumes no responsibility or liability for its use or accuracy.

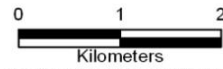
Proposed roads are subject to change.

It is the intention of the HDSB to provide up-to-date and accurate information, and reasonable efforts have been made by the HDSB to verify the information, however a degree of error or change is inherent. This information is distributed "as is" without warranty. HDSB assume no legal liability or responsibility for the accuracy, completeness, or usefulness of any information. If you require additional information please contact the Planning Department at 905-335-3663.



Halton District School Board
Planning Department

French Immersion Program Boundary



The current street network was provided by the Regional Municipality of Halton and the Region assumes no responsibility or liability for its use or accuracy.

Proposed roads are subject to change.

It is the intention of the HDSB to provide up-to-date and accurate information, and reasonable efforts have been made by the HDSB to verify the information, however a degree of error or change is inherent. This information is distributed "as is" without warranty. HDSB assume no legal liability or responsibility for the accuracy, completeness, or usefulness of any information. If you require additional information please contact the Planning Department at 905-335-3663.