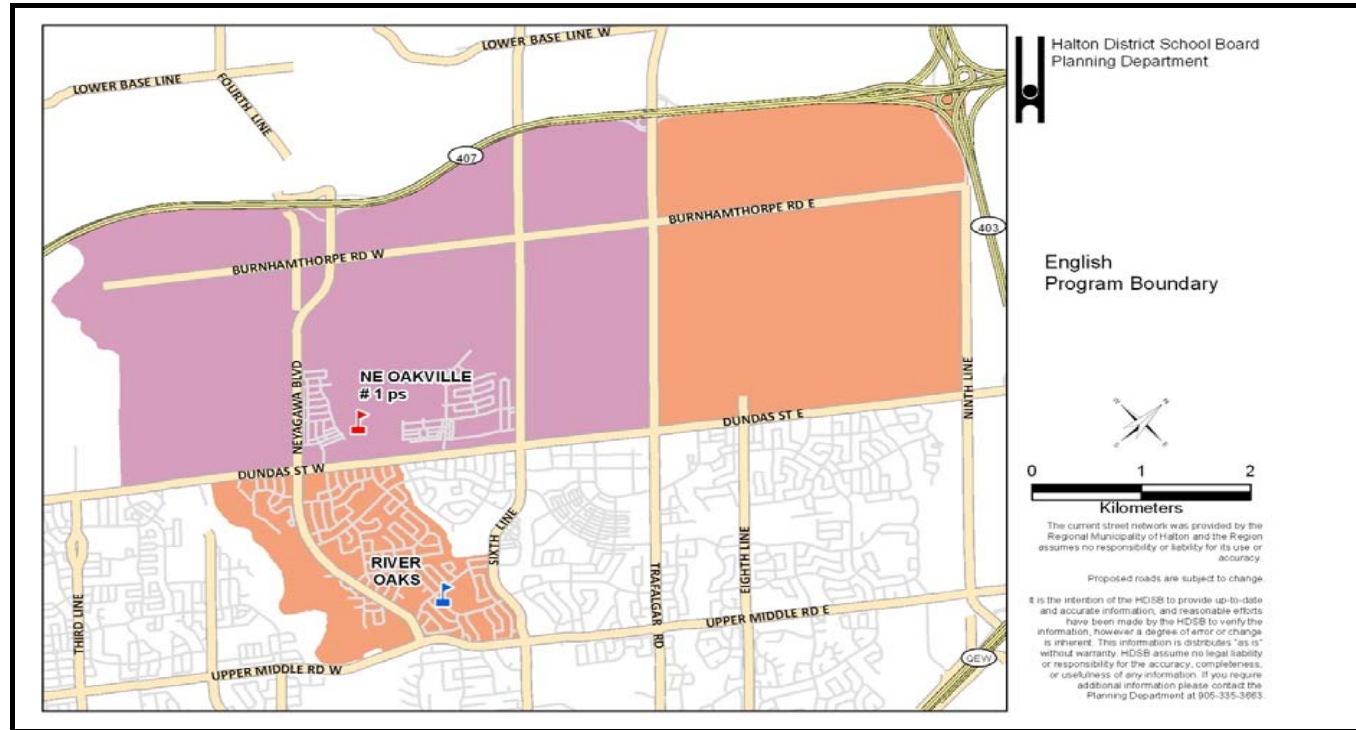
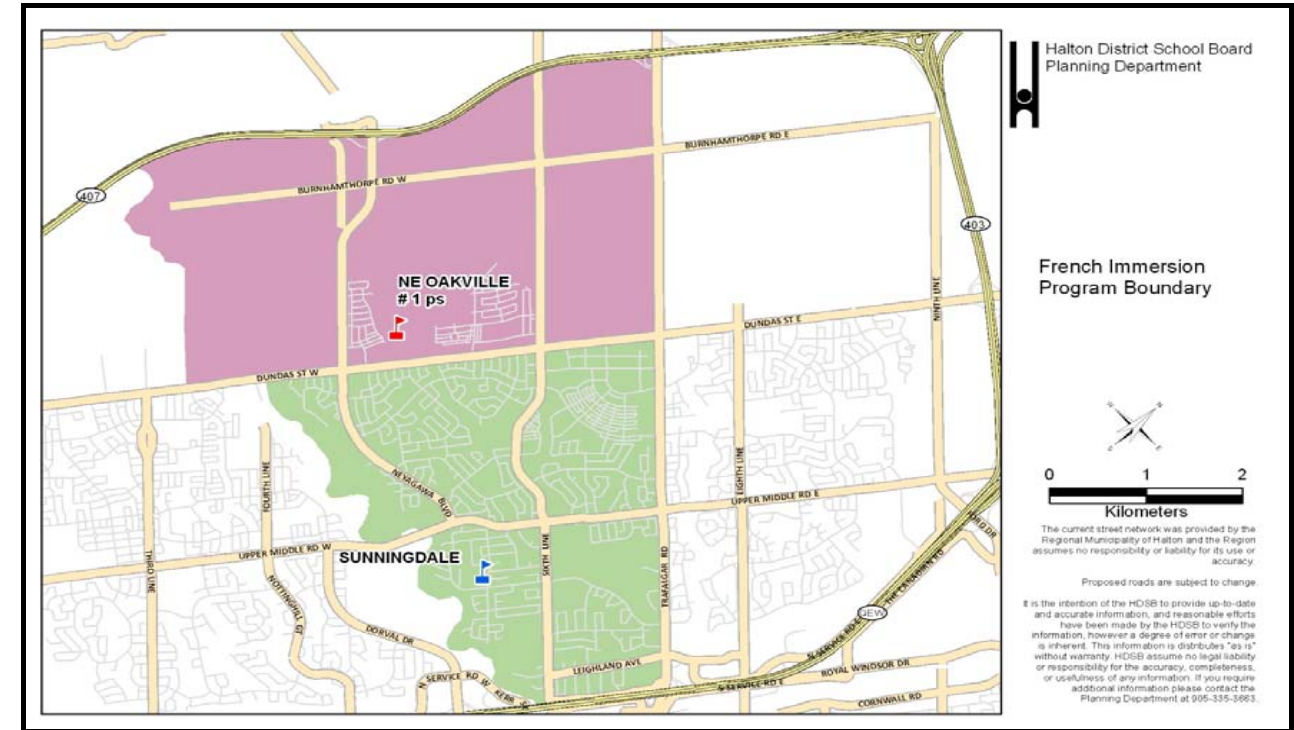


Scenario 5a



Scenario 5a



	Program	OTG	Port	Total	2014	2015	2016	2017	2018	2019	2020	2021	2022	2023	2024
River Oaks PS	ENG				731	482	418	395	389	433	496	563	659	762	874
	FI	636	12	912	0	0	0	0	0	0	0	0	0	0	0
	Total				731	482	418	395	389	433	496	563	659	762	874
	River Oaks Utilization				-95	154	218	241	247	203	140	73	-23	-126	-238
Percent Utilization				115%	76%	66%	62%	61%	68%	78%	89%	104%	120%	137%	
Sunningdale PS	ENG				0	0	0	0	0	0	0	0	0	0	0
	FI	613	10	843	813	722	733	762	773	775	778	762	756	753	748
	Total				813	722	733	762	773	775	778	762	756	753	748
	Sunningdale Utilization				-200	-109	-120	-149	-160	-162	-165	-149	-143	-140	-135
Percent Utilization				133%	118%	120%	124%	126%	126%	127%	124%	123%	123%	122%	
N of Dundas (between Neyagawa & Sixth Line)	ENG				-	379	502	533	579	604	675	794	868	932	1003
	FI	-	-	-	-	155	202	226	251	275	299	326	341	348	354
	Sub-Total				0	534	704	759	830	879	974	1120	1209	1280	1357
N of Dundas (between Sixth Line & Trafalgar)	ENG				-	0	64	141	233	339	448	537	609	678	745
	FI	-	-	-	-	0	8	19	30	46	57	68	76	87	95
	Sub-Total				0	0	72	160	263	385	505	605	685	765	840
N of Dundas (east of Trafalgar)	ENG				-	0	0	0	0	0	0	0	0	0	0
	FI	-	-	-	-	0	0	0	0	0	0	0	0	0	0
	Sub-Total				0	0	0	0	0	0	0	0	0	0	0
N of Dundas (west of Neyagawa)	ENG				-	0	0	0	0	0	0	0	0	0	0
	FI	-	-	-	-	0	0	0	0	0	0	0	0	0	0
	Sub-Total				0	0	0	0	0	0	0	0	0	0	0
NE Oakville #1 ps	ENG				-	379	566	674	812	943	1123	1331	1477	1610	1748
	FI	776	12	1052	-	155	210	245	281	321	356	394	417	435	449
	Total				0	534	776	919	1093	1264	1479	1725	1894	2045	2197
	NE Oakville #1 Utilization				0	242	0	-143	-317	-488	-703	-949	-1118	-1269	-1421
Percent Utilization				0%	69%	100%	118%	141%	163%	191%	222%	244%	264%	283%	
Study Total		2025	34	2807	1544	1738	1927	2076	2255	2472	2753	3050	3309	3560	3819

River Oaks PS is a JK-8 ENG school
 English boundary JK-8 includes area north of Dundas Street West:

- East: Ninth Line
- West: Trafalgar Road
- North: Highway 407
- South: Dundas Street West

Sunningdale PS is a 1-8 FI school
 French Immersion boundary 1-8 south of Dundas Street West has not changed.

NE Oakville #1 ps opens September 2015 as a JK-7 ENG and 1-7 FI school; grade 8 ENG and FI will be added September 2016
 English boundary JK-8 and French Immersion boundary 1-8 is:

- East: Trafalgar Road
- West: 16 Mile Creek
- North: Highway 407
- South: Dundas Street West