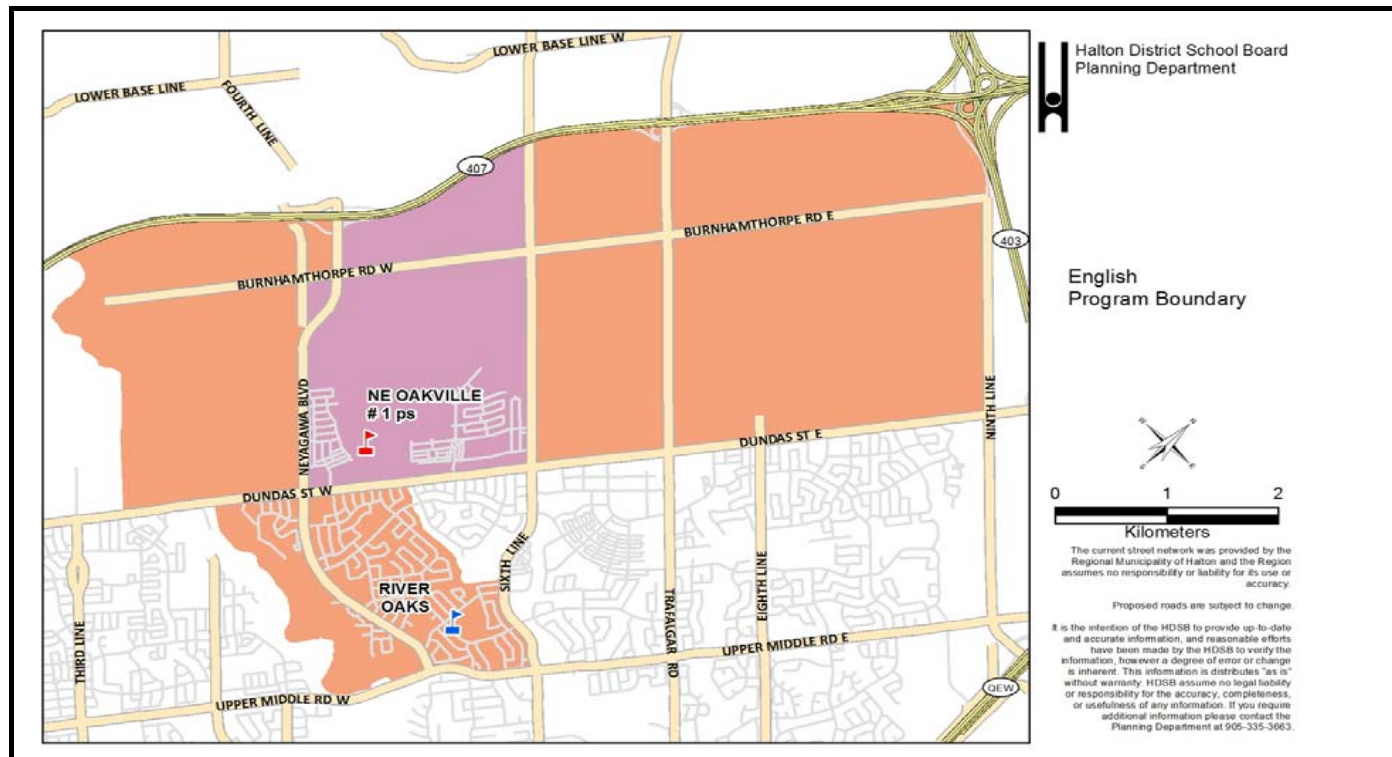
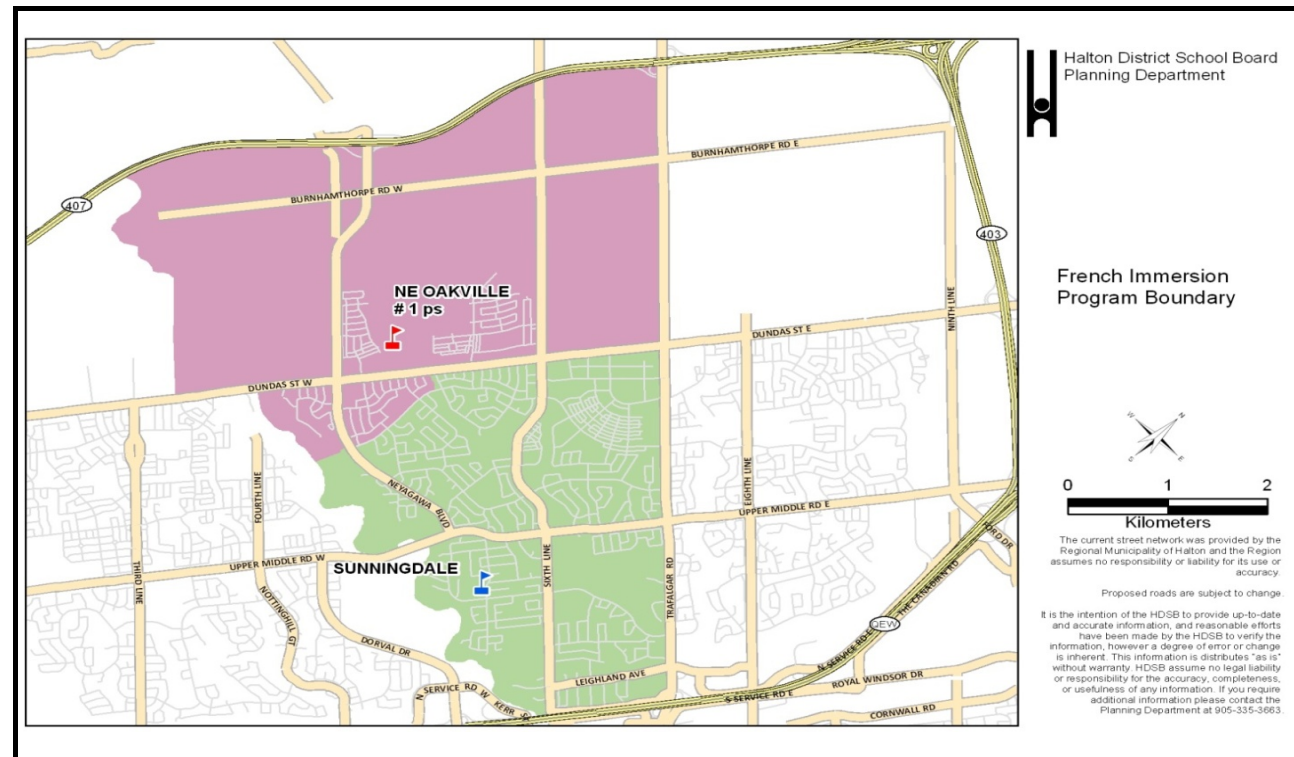


Scenario 10c



Scenario 10c



	Program	OTG	Port	Total	2014	2015	2016	2017	2018	2019	2020	2021	2022	2023	2024
River Oaks PS	ENG				731	482	482	536	622	772	944	1100	1268	1440	1619
	FI	636	12	912	0	0	0	0	0	0	0	0	0	0	0
	Total				731	482	482	536	622	772	944	1100	1268	1440	1619
	River Oaks Utilization				-95	154	154	100	14	-136	-308	-464	-632	-804	-983
Percent Utilization				115%	76%	76%	84%	98%	121%	148%	173%	199%	226%	255%	
Sunningdale PS	ENG				0	0	0	0	0	0	0	0	0	0	0
	FI	613	10	843	813	632	629	657	665	661	662	650	644	641	636
	Total				813	632	629	657	665	661	662	650	644	641	636
	Sunningdale Utilization				-200	-19	-16	-44	-52	-48	-49	-37	-31	-28	-23
Percent Utilization				133%	103%	103%	107%	108%	108%	108%	106%	105%	105%	104%	
N of Dundas (between Neyagawa & Sixth Line)	ENG				-	379	502	533	579	604	675	794	868	932	1003
	FI	-	-	-	-	155	202	226	251	275	299	326	341	348	354
	Sub-Total				0	534	704	759	830	879	974	1120	1209	1280	1357
N of Dundas (between Sixth Line & Trafalgar)	ENG				-	0	0	0	0	0	0	0	0	0	0
	FI	-	-	-	-	0	0	0	0	0	0	0	0	0	0
	Sub-Total				0	0	0	0	0	0	0	0	0	0	0
N of Dundas (east of Trafalgar)	ENG				-	0	0	0	0	0	0	0	0	0	0
	FI	-	-	-	-	0	8	19	30	46	57	68	76	87	95
	Sub-Total				0	0	8	19	30	46	57	68	76	87	95
N of Dundas (west of Neyagawa)	ENG				-	0	0	0	0	0	0	0	0	0	0
	FI	-	-	-	-	0	0	0	0	0	0	0	0	0	0
	Sub-Total				0	0	0	0	0	0	0	0	0	0	0
S of Dundas (down to River Glen Blvd between 16 Mile Creek & Munn's Creek)	ENG				-	0	0	0	0	0	0	0	0	0	0
	FI	-	-	-	-	90	104	105	108	114	116	112	112	112	112
	Sub-Total				0	90	104	105	108	114	116	112	112	112	112
NE Oakville #1 ps	ENG				-	379	502	533	579	604	675	794	868	932	1003
	FI	776	12	1052	-	245	314	350	389	435	472	506	529	547	561
	Total				0	624	816	883	968	1039	1147	1300	1397	1479	1564
	NE Oakville #1 Utilization				0	152	-40	-107	-192	-263	-371	-524	-621	-703	-788
Percent Utilization				0%	80%	105%	114%	125%	134%	148%	168%	180%	191%	202%	
Study Total		2025	34	2807	1544	1738	1927	2076	2255	2472	2753	3050	3309	3560	3819

River Oaks PS is a JK-8 ENG school
 English boundary JK-8 includes areas north of Dundas Street West (2 parts):
Part 1

- East: Neyagawa Blvd
- West: 16 Mile Creek
- North: Highway 407
- South: Dundas Street West

Part 2

- East: Ninth Line
- West: Sixth Line
- North: Highway 407
- South: Dundas Street West

Sunningdale PS is a 1-8 FI school
 French Immersion boundary 1-8 south of Dundas Street West has changed with the creation of the NE Oakville #1 FI boundary.

NE Oakville #1 ps opens September 2015 as a JK-7 ENG and 1-7 FI school; grade 8 ENG and grade 8 FI will be added September 2016
 English boundary JK-8 is:

- East: Sixth Line
- West: Neyagawa Blvd
- North: Highway 407
- South: Dundas Street West

French Immersion boundary 1-8 is:

- East: Trafalgar Road
- West: 16 Mile Creek
- North: Highway 407
- South: Dundas Street West

French Immersion boundary 1-8 also includes an area south of Dundas Street West:

- East: Munn's Creek
- West: 16 Mile Creek
- North: Dundas Street West
- South: River Glen Blvd