

Option 1: TBD Area to Tiger Jeet Singh PS



English Program Boundary

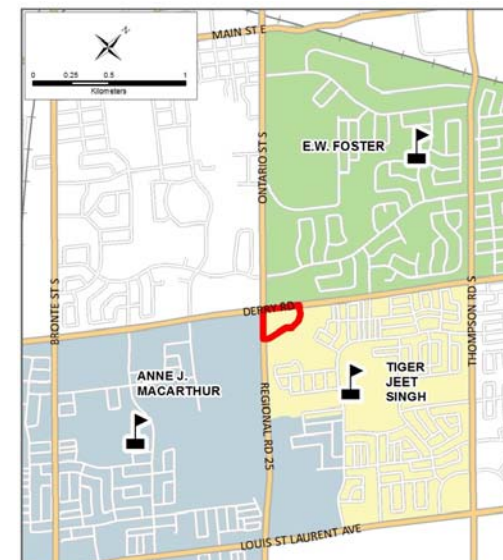
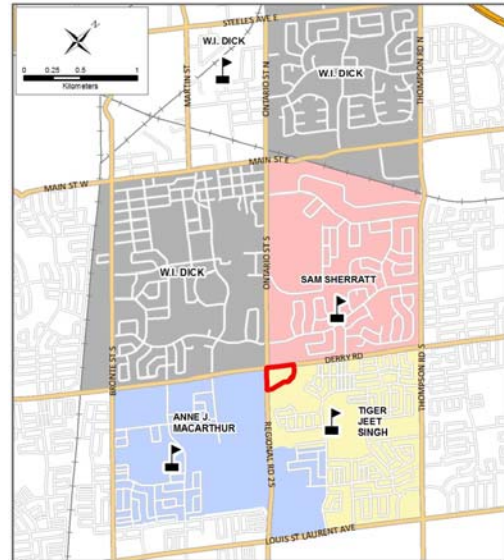
French Immersion Program Boundary

Grades JK-5

Grades 6-8

Grades 2-5

Grades 6-8



It is the intention of the HDSB to provide up-to-date and accurate information, and reasonable efforts have been made by the HDSB to verify the information, however a degree of error or change is inherent. This information is distributed "as is" without warranty. HDSB assume no legal liability or responsibility for the accuracy, completeness, or usefulness of any information. If you require additional information please contact the Planning Department at 905-335-3663.

The current street network was provided by the Regional Municipality of Halton and the Region assumes no responsibility or liability for its use or accuracy.

School	Program	School Cap.	Max. Port	Total Cap	2019	2020	2021	2022	2023	2024	2025	2026	2027	2028	2029	
Anne J. MacArthur PS (K-8 ENG, 2-8 FI)	ENG	793	18	1207	621	624	593	571	559	562	560	557	565	562	562	
	FI				358	376	378	371	349	303	305	308	310	308	307	
	SC-SPED				5	5	5	5	5	5	5	5	5	5	5	
	Total				984	1005	976	947	913	870	870	870	880	875	874	
	Shortage of Pupil Places					-191	-212	-183	-154	-120	-77	-77	-77	-87	-82	-81
Percent Utilization					124%	127%	123%	119%	115%	110%	110%	110%	111%	110%	110%	
E.W. Foster PS (K-5 ENG, 2-6 FI)	ENG	328	12	604	144	155	137	129	138	147	151	147	157	169	179	
	FI				165	163	156	165	168	163	160	160	161	166	168	
	SC-SPED				309	318	293	294	306	310	311	307	318	335	347	
	Total				309	318	293	294	306	310	311	307	318	335	347	
	Available/Shortage of Pupil Places					19	10	35	34	22	18	17	21	10	-7	-19
Percent Utilization					94%	97%	89%	90%	93%	95%	94%	94%	97%	102%	106%	
Sam Sherratt PS (K-8)	ENG	415	10	645	260	271	298	319	328	328	327	342	356	359	360	
	SC-SPED				143	129	129	117	117	126	123	123	124	123	122	
	FI				403	400	427	436	445	454	450	465	480	482	482	
	Total				403	400	427	436	445	454	450	465	480	482	482	
	Available/Shortage of Pupil Places					12	15	-12	-21	-30	-39	-35	-50	-65	-67	-67
Percent Utilization					97%	96%	103%	105%	107%	109%	108%	112%	116%	116%	116%	
Tiger Jeet Singh PS (K-8 ENG, 2-8 FI)	ENG	896	12	1172	853	843	824	797	791	798	783	784	774	779	772	
	FI				260	254	225	210	190	173	161	162	159	160	160	
	SC-SPED				8	8	8	8	8	8	8	8	8	8	8	
	Total				1121	1105	1057	1015	989	979	952	954	941	947	940	
	Shortage of Pupil Places					-225	-209	-161	-119	-93	-83	-56	-58	-45	-51	-44
Percent Utilization					125%	123%	118%	113%	110%	109%	106%	106%	105%	106%	105%	
W.I Dick PS (6-8, ENG, FI)	ENG	412	3	481	169	184	192	189	186	200	253	290	320	313	324	
	FI				235	221	222	188	172	156	165	175	181	177	174	
	SC-SPED				404	405	414	377	358	356	418	465	501	490	498	
	Total				404	405	414	377	358	356	418	465	501	490	498	
	Available/Shortage of Pupil Places					8	7	-2	35	54	56	-6	-53	-89	-78	-86
Percent Utilization					98%	98%	100%	92%	87%	86%	101%	113%	122%	119%	121%	
To Be Determined (K-8 students)	ENG	-	-	-	0	0	0	0	0	0	0	0	0	0	0	
	FI	-	-	-	0	0	0	0	0	0	0	0	0	0	0	
	SC-SPED	-	-	-	0	0	0	0	0	0	0	0	0	0	0	
	Total	-	-	-	0	0	0	0	0	0	0	0	0	0	0	
Study Total					2432	2432	2432	2432	2432	2432	2432	2432	2432	2432	2432	2432

Option 1 - TBD area redirected to Tiger Jeet Singh PS

Status Quo – No change from the current situation for Anne J. MacArthur PS, E.W. Foster PS, Sam Sherratt PS, W.I. Dick PS.

TBA area to be directed to Tiger Jeet Singh PS. Enrolments will be impacted starting in 2023.
High School: Craig Kielburger SS.

Tiger Jeet Singh PS: Enrolments are projected to remain above 1000 students until 2022 and above 900 students past 2029. With the addition of TBD enrolments, it is projected that one additional portable will be required from 2025 onward. Utilization is expected to increase by 4% in 2028.
High school is Craig Kielburger SS.

Transportation: TBD appears to be within walking distance to Tiger Jeet Singh PS, no major roads need to be crossed. It is the preferred option for HSTS.