

# Option 4: TBD Area to Anne J MacArthur PS

## English Program Boundary

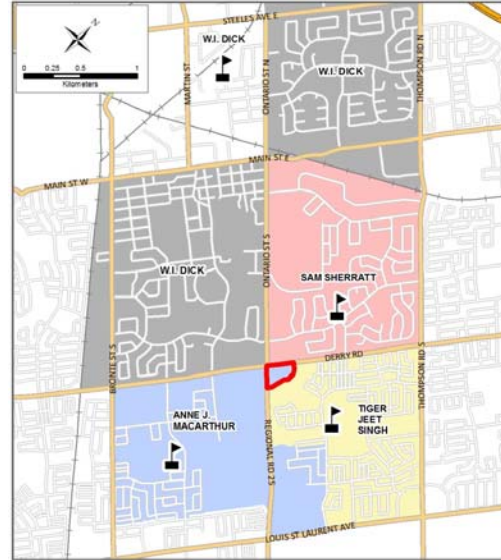
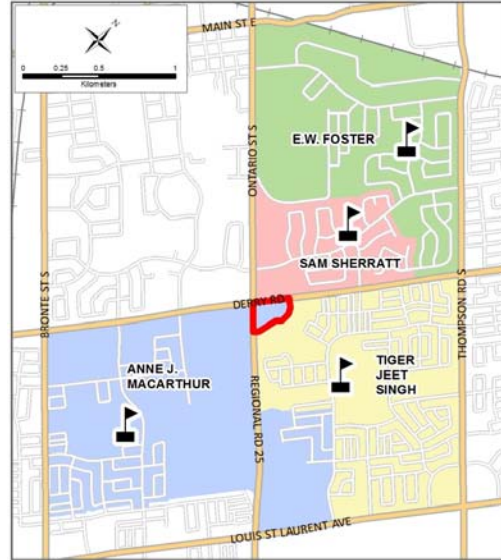
## French Immersion Program Boundary

### Grades JK-5

### Grades 6-8

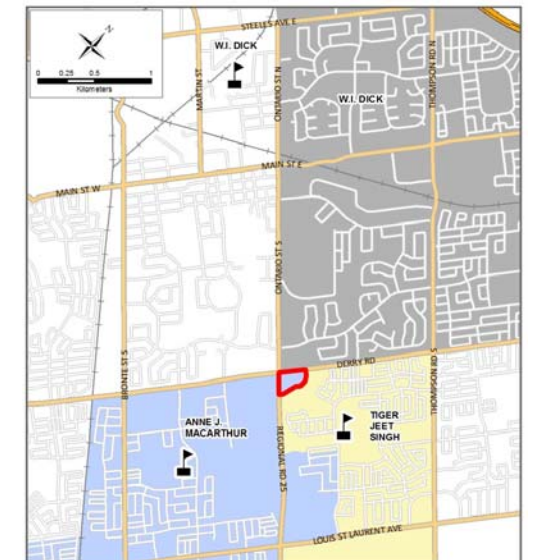
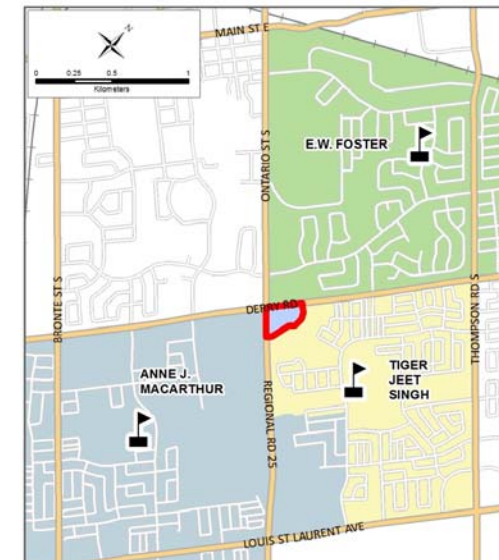
### Grades 2-5

### Grades 6-8



It is the intention of the HDSB to provide up-to-date and accurate information, and reasonable efforts have been made by the HDSB to verify the information, however a degree of error or change is inherent. This information is distributed "as is" without warranty. HDSB assume no legal liability or responsibility for the accuracy, completeness, or usefulness of any information. If you require additional information please contact the Planning Department at 905-335-3663.

The current street network was provided by the Regional Municipality of Halton and the Region assumes no responsibility or liability for its use or accuracy.



School	Program	School Cap.	Max. Port	Total Cap	2019	2020	2021	2022	2023	2024	2025	2026	2027	2028	2029	
Anne J. MacArthur PS (K-8 ENG, 2-8 FI)	ENG	793	18	1207	621	624	593	571	562	570	571	581	590	590	591	
	FI				358	376	378	371	349	303	307	311	313	311	310	
	SC-SPED				5	5	5	5	5	5	5	5	5	5	5	5
	<b>Total</b>				<b>984</b>	<b>1005</b>	<b>976</b>	<b>947</b>	<b>916</b>	<b>878</b>	<b>883</b>	<b>897</b>	<b>908</b>	<b>906</b>	<b>906</b>	
	<b>Shortage of Pupil Places</b>				-191	-212	-183	-154	-123	-85	-90	-104	-115	-113	-113	
<b>Percent Utilization</b>					124%	127%	123%	119%	116%	111%	111%	113%	115%	114%	114%	
E.W. Foster PS (K-5 ENG, 2-6 FI)	ENG	328	12	604	144	155	137	129	138	147	151	147	157	169	179	
	FI				165	163	156	165	168	163	160	161	166	168		
	<b>Total</b>				<b>309</b>	<b>318</b>	<b>293</b>	<b>294</b>	<b>306</b>	<b>310</b>	<b>311</b>	<b>307</b>	<b>318</b>	<b>335</b>	<b>347</b>	
	<b>Available/Shortage of Pupil Places</b>				19	10	35	34	22	18	17	21	10	-7	-19	
	<b>Percent Utilization</b>				94%	97%	89%	90%	93%	95%	95%	94%	97%	102%	106%	
Sam Sherratt PS (K-8)	ENG	415	10	645	260	271	298	319	328	328	327	342	356	359	360	
	SC-SPED				143	129	129	117	117	126	123	123	124	123	122	
	<b>Total</b>				<b>403</b>	<b>400</b>	<b>427</b>	<b>436</b>	<b>445</b>	<b>454</b>	<b>450</b>	<b>465</b>	<b>480</b>	<b>482</b>	<b>482</b>	
	<b>Available/Shortage of Pupil Places</b>				12	15	-12	-21	-30	-39	-35	-50	-65	-67	-67	
	<b>Percent Utilization</b>				97%	96%	103%	105%	107%	109%	108%	112%	116%	116%	116%	
Tiger Jeet Singh PS (K-8 ENG, 2-8 FI)	ENG	896	12	1172	853	843	824	797	788	790	772	760	749	752	743	
	FI				260	254	225	210	189	172	160	159	156	157	157	
	SC-SPED				8	8	8	8	8	8	8	8	8	8	8	
	<b>Total</b>				<b>1121</b>	<b>1105</b>	<b>1057</b>	<b>1015</b>	<b>985</b>	<b>970</b>	<b>940</b>	<b>927</b>	<b>913</b>	<b>917</b>	<b>908</b>	
	<b>Shortage of Pupil Places</b>				-225	-209	-161	-119	-89	-74	-44	-31	-17	-21	-12	
<b>Percent Utilization</b>					125%	123%	118%	113%	110%	108%	105%	103%	102%	102%	101%	
W.I. Dick PS (6-8, ENG, FI)	ENG	412	3	481	169	184	192	189	186	200	253	290	320	313	324	
	FI				235	221	222	188	172	156	175	181	177	174		
	<b>Total</b>				<b>404</b>	<b>405</b>	<b>414</b>	<b>377</b>	<b>358</b>	<b>356</b>	<b>418</b>	<b>465</b>	<b>501</b>	<b>490</b>	<b>498</b>	
	<b>Available/Shortage of Pupil Places</b>				8	7	-2	35	54	56	-6	-53	-89	-78	-86	
	<b>Percent Utilization</b>				98%	98%	100%	92%	87%	86%	101%	113%	122%	119%	121%	
To Be Determined (K-8 students)	ENG	-	-	-	0	0	0	0	0	0	0	0	0	0	0	
	FI	-	-	-	0	0	0	0	0	0	0	0	0	0	0	
	<b>Total</b>	<b>0</b>	<b>0</b>	<b>0</b>	<b>0</b>	<b>0</b>	<b>0</b>	<b>0</b>	<b>0</b>	<b>0</b>	<b>0</b>	<b>0</b>	<b>0</b>	<b>0</b>	<b>0</b>	
	<b>Study Total</b>	<b>2432</b>	<b>52</b>	<b>3628</b>	3221	3233	3167	3069	3010	2968	3002	3061	3120	3130	3141	

### Option 4 - TBD area redirected to Anne J. MacArthur PS

Status Quo – No change from the current situation for *E.W. Foster PS*, *Sam Sherratt PS*, *W.I. Dick PS* and *Tiger Jeet Singh PS*.

**TBA area** is redirected to *Anne J. MacArthur PS* for English and FI programs. Enrolments will be impacted starting in 2023.  
High School: *Craig Kielburger SS*.

**Anne J. MacArthur PS:** Enrolments are expected to remain above 900 students until 2023 from 2027 to 2029 enrolments are projected to remain above 900. With the addition of TBD enrolments, it is projected one additional portable will be required from 2025 onward. Utilization is expected to increase by 4% in 2027.

*Anne J MacArthur PS* has a split grade 8 cohort to *Milton District HS* and *Craig Kielburger SS*.

**Transportation:** Crossing guards are not permitted on Derry Road or Regional Road 25, students will be bussed to Sam Sherratt PS, E.W. Foster PS and W.I. Dick PS. HSTS notes these roads are high traffic and will make bus pick-ups and drop-offs challenging for both students and traffic flow.