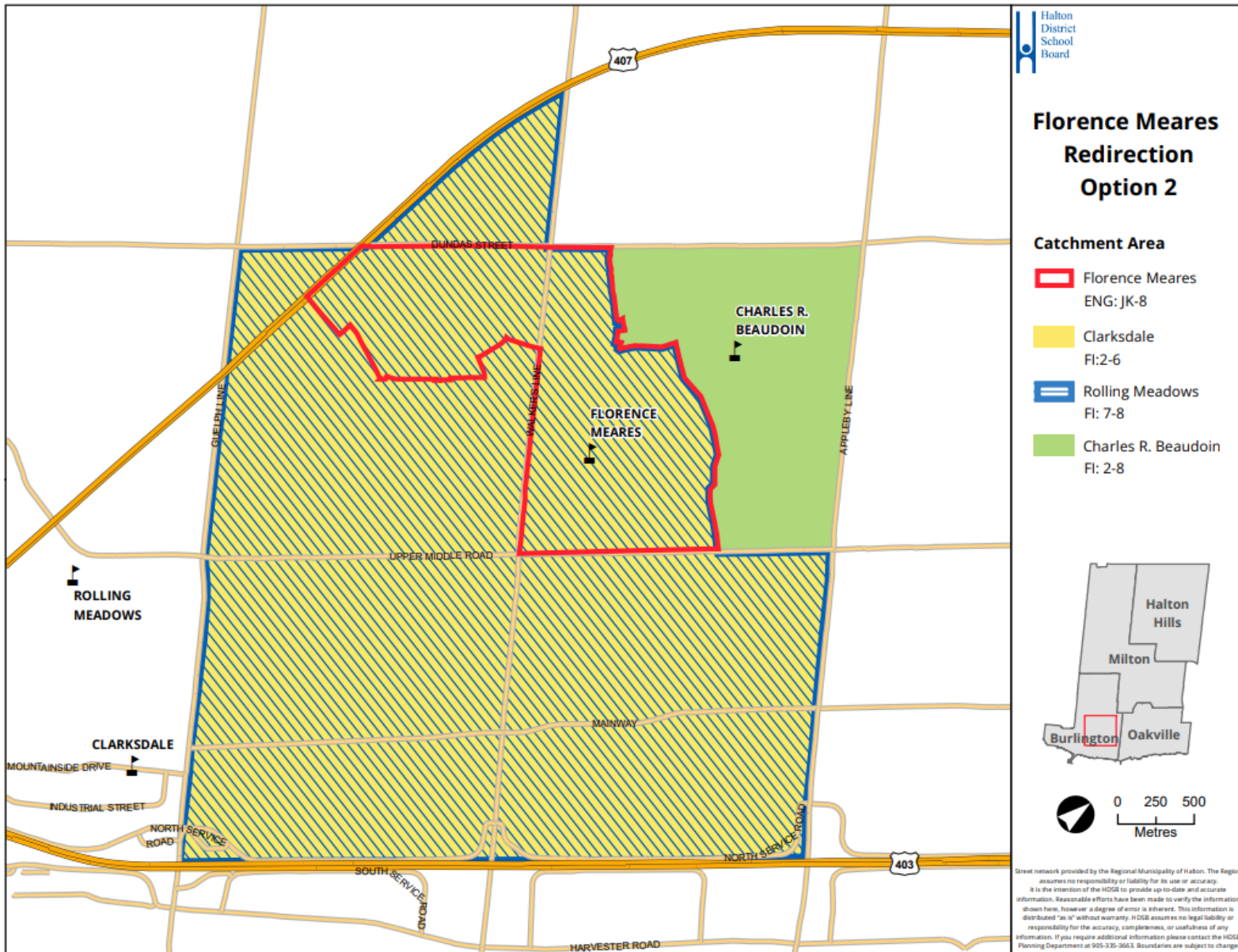


# Option 2

Dec 22, 2021



**Option 2**

Dec 20, 2021

Students are directed to Clarksdale-Rolling Meadows PS for FI from Florence Meares

Scenario 1345

School	Building Cap. (OTG)	Portable	Total Capacity	Program	2021	2022	2023	2024	2025	2026	2027	2028	2029	2030	2031	Notes
Florence Meares PS	645	Maximum: 12	921	ENG	603	593	595	611	598	595	589	589	576	580	571	Status Quo
				FI	0	0	0	0	0	0	0	0	0	0	0	
		SC-SPED		13	13	13	13	13	13	13	13	13	13	13		
		<b>Total</b>		<b>616</b>	<b>606</b>	<b>608</b>	<b>624</b>	<b>611</b>	<b>608</b>	<b>602</b>	<b>602</b>	<b>589</b>	<b>593</b>	<b>584</b>		
	<i>Percent Utilization</i>				96%	94%	94%	97%	95%	94%	93%	93%	91%	92%	91%	
	<i>Shortage of Pupil Places</i>				29	39	37	21	34	37	43	43	56	52	61	
<i>Estimate number of portables</i>				-1	-2	-2	-1	-1	-2	-2	-2	-2	-2	-3		
Charles R. Beaudoin PS	722	Maximum: 4	814	ENG	248	237	215	204	197	210	217	221	223	224	224	ENG program status quo. FI students in the Florence Meares PS catchment are redirected to Clarksdale and Rolling Meadows. (east of Walker's Line)
				FI	248	227	202	191	181	173	155	147	150	150	149	
		SC-SPED		108	109	111	111	116	110	109	107	106	105	105		
		<b>Total</b>		<b>604</b>	<b>574</b>	<b>529</b>	<b>506</b>	<b>494</b>	<b>493</b>	<b>480</b>	<b>475</b>	<b>479</b>	<b>479</b>	<b>478</b>		
	<i>Percent Utilization</i>				84%	79%	73%	70%	68%	68%	67%	66%	66%	66%	66%	
	<i>Shortage of Pupil Places</i>				118	148	193	216	228	229	242	247	243	243	244	
<i>Estimate number of portables</i>				-5	-6	-8	-9	-10	-10	-11	-11	-11	-11	-11		
Clarksdale PS	553	Maximum: 12	829	ENG	214	233	246	257	266	268	263	260	259	258	256	ENG program status quo. FI students in the Florence Meares PS catchment are directed to Clarksdale PS.
				FI	168	173	183	196	196	201	203	200	195	194	192	
		SC-SPED		5	5	5	5	5	5	5	5	5	5	5		
		<b>Total</b>		<b>387</b>	<b>411</b>	<b>435</b>	<b>457</b>	<b>467</b>	<b>474</b>	<b>471</b>	<b>466</b>	<b>459</b>	<b>457</b>	<b>453</b>		
	<i>Percent Utilization</i>				70%	74%	79%	83%	85%	86%	85%	84%	83%	83%	82%	
	<i>Shortage of Pupil Places</i>				166	142	118	96	86	79	82	87	94	96	100	
<i>Estimate number of portables</i>				-7	-6	-5	-4	-4	-3	-4	-4	-4	-4	-4		
Rolling Meadows PS	584	Maximum: 12	860	ENG	330	330	335	337	325	316	318	322	319	314	304	ENG program status quo. FI students in the Florence Meares PS catchment are directed to Rolling Meadows PS. (east of Walker's Line)
				FI	93	95	91	77	78	79	82	90	92	89	86	
		SC-SPED		14	14	14	14	14	14	14	14	14	14	14		
		<b>Total</b>		<b>437</b>	<b>439</b>	<b>440</b>	<b>428</b>	<b>418</b>	<b>409</b>	<b>414</b>	<b>426</b>	<b>424</b>	<b>417</b>	<b>404</b>		
	<i>Percent Utilization</i>				75%	75%	75%	73%	71%	70%	71%	73%	73%	71%	69%	
	<i>Shortage of Pupil Places</i>				147	145	144	156	166	175	170	158	160	167	180	
<i>Estimate number of portables</i>				0	0	0	0	0	0	0	0	7	7	8		

**What you need to know about the current status.**

Enrolments are based on Oct 31, 2021 Trillium extract.

All development timing are a best estimates . Development may advance or be delayed.

Progression from Grade 1 ENG to grade 2FI:

Current:	ENG 75%	CRB FI 13%	Clark FI 4%	Other 8%
Option 1:	ENG 75%	CRB FI 17%	Clark FI 0%	Other 8%
Option 2:	ENG 75%	CRB FI 0%	Clark FI 17%	Other 8%