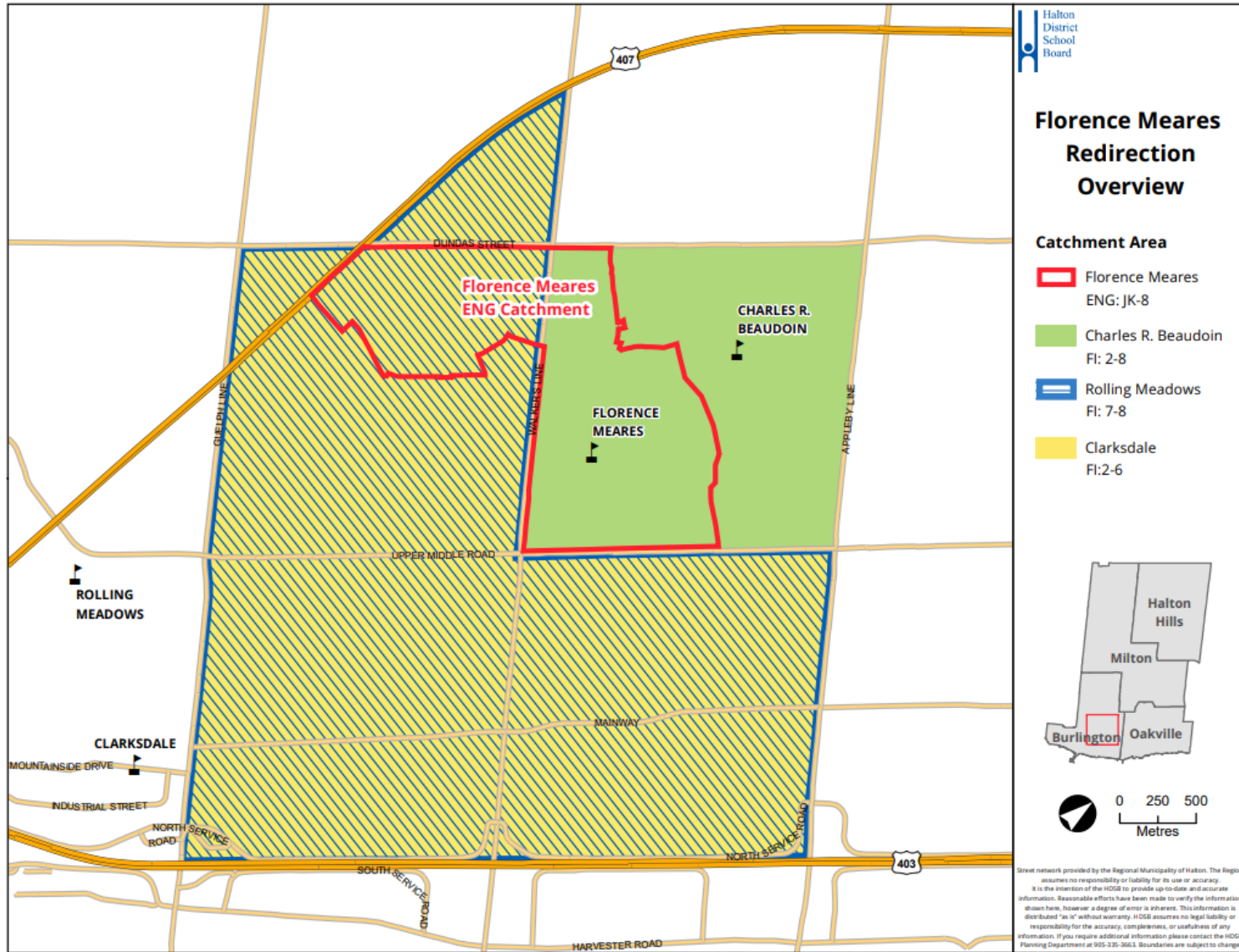


Status Quo

Dec 22, 2021



Status Quo

Dec 23, 2021

[What you need to know about the current status](#)

School	Building Cap. (OTG)	Portable	Total Capacity	Program	2021	2022	2023	2024	2025	2026	2027	2028	2029	2030	2031	Notes
Florence Meares PS	645	Maximum: 12 Port: Cap: 276	921	ENG	603	587	584	594	575	566	554	547	536	539	531	Grades JK-8 ENG, and SPED. Students are directed to Clarksdale PS/ Rolling Meadows PS or Charles R. Beaudoin PS for FI based on residence east or west of Walker's Line
				FI	0	0	0	0	0	0	0	0	0	0	0	
				SC-SPED	13	13	13	13	13	13	13	13	13	13	13	
				Total	616	600	597	607	588	579	567	560	549	552	544	
	<i>Percent Utilization</i>				96%	93%	93%	94%	91%	90%	88%	87%	85%	86%	84%	
	<i>Shortage of Pupil Places</i>				29	45	48	38	57	66	78	85	96	93	101	
	<i>Estimate number of portables</i>				-1	-2	-2	-2	-2	-3	-3	-4	-4	-4	-4	
Charles R. Beaudoin PS	722	Maximum: 4 Port: Cap: 92	814	ENG	248	237	215	204	197	210	217	221	223	224	224	Grades JK-8 ENG, FI grades 2-6, SPED Gifted grades 5-8, and SPED program. (In 2021 SPED Gifted includes grade 4)
				FI	248	237	220	217	214	215	204	203	204	205	203	
				SC-SPED	108	109	111	111	117	110	108	107	106	106	106	
				Total	604	584	546	532	528	536	530	532	534	534	533	
	<i>Percent Utilization</i>				84%	81%	76%	74%	73%	74%	73%	74%	74%	74%	74%	
	<i>Shortage of Pupil Places</i>				118	138	176	190	194	186	192	190	188	188	189	
	<i>Estimate number of portables</i>				-5	-6	-8	-8	-8	-8	-8	-8	-8	-8	-8	
Clarksdale PS	553	Maximum: 12 Port: Cap: 276	829	ENG	214	233	246	257	266	268	263	260	259	259	256	Grades JK-6 ENG, FI grades 2-6. Clarksdale PS feeds into Rolling Meadow PS for grade 7 & 8.
				FI	168	170	178	188	186	188	190	188	183	182	180	
				SC-SPED	5	5	5	5	5	5	5	5	5	5	5	
				Total	387	408	429	450	457	461	458	453	447	446	441	
	<i>Percent Utilization</i>				70%	74%	78%	81%	83%	83%	83%	82%	81%	81%	80%	
	<i>Shortage of Pupil Places</i>				166	145	124	103	96	92	95	100	106	107	112	
	<i>Estimate number of portables</i>				-7	-6	-5	-4	-4	-4	-4	-4	-5	-5	-5	
Rolling Meadows PS	584	Maximum: 12 Port: Cap: 276	860	ENG	330	330	335	337	325	316	318	322	319	314	304	Grades JK-8 ENG, FI grades 7 & 8.
				FI	93	95	91	77	78	79	79	86	88	85	82	
				SC-SPED	14	14	14	14	14	14	14	14	14	14	14	
				Total	437	439	440	428	418	409	412	422	421	413	400	
	<i>Percent Utilization</i>				75%	75%	75%	73%	71%	70%	71%	72%	72%	71%	69%	
	<i>Shortage of Pupil Places</i>				147	145	144	156	166	175	172	162	163	171	184	
	<i>Estimate number of portables</i>				0	0	0	0	0	0	0	0	7	7	8	
Total					2044	2032	2012	2017	1990	1984	1967	1967	1950	1946	1918	

What you need to know about the current status.

Enrolments are based on Oct 31, 2021 Trillium extract.

All development timing are a best estimates . Development may advance or be delayed.

Progression from Grade 1 ENG to grade 2FI:

- Current: ENG 75% CRB FI 13% Clark FI 4% Other 8%
- Option 1: ENG 75% CRB FI 17% Clark FI 0% Other 8%
- Option 2: ENG 75% CRB FI 0% Clark FI 17% Other 8%