

**Report Title:** South Milton & Milton SE #13 PS Boundary Review Study

**Submitted by:** J. Fowler, Superintendent of Education  
D. Barnes, Superintendent of Education  
F. Thibeault, General Manager, Planning  
C. Ennis, Director of Education

**Meeting Date:** December 3, 2024

---

## Recommendation

**BE IT RESOLVED THAT** the Halton District School Board implement Option 6a, and establish new boundaries for all affected schools within the South Milton & Milton SE #13 PS Boundary Review Study Area for the English Program and French Immersion Programs as described in Board Report 24158 and [Appendix D](#), implementation dates subject to the opening dates of Milton SE #13 ps;

**THAT** the Halton District School Board permit students currently attending affected French Immersion zones within the Viola Desmond PS, and Irma Coulson PS as of June 30, 2025, and who are impacted by the boundary changes, to be granted legacy exemptions to graduate at their current school, in accordance with Option 6a, as described in Board Report 24158 and Appendix D;

**THAT** the Halton District School Board permits students currently attending the English program at Viola Desmond PS, located in Zone 12 as of June 30, 2025, be granted legacy exemptions to graduate at their current school in accordance with Option 6a, as described in Board Report 24158 and Appendix D;

**THAT** the Halton District School Board permit students that attended the English Programs at Cedar Ridge PS up to January 7, 2024, of the 2024 school year, located in zones 19, 20, 21, 22, 23, and MILT 13, to be granted legacy exemptions to graduate at their current school in accordance with Option 6a, as described in Board Report 24158 and Appendix D;

**THAT** the Halton District School Board implement effective immediately the holding boundaries for Milton #13 ps, specifically zones 19, 20, 21, 22, 23, and MILT 13, and that new students enrolling after January 7, 2024, be directed to Hawthorne Village PS with transportation, in accordance with Option 6a, as described in Board Report 24158 and Appendix D;

**THAT** the Halton District School Board permits older siblings in French Immersion, to be given legacy exemption, to have the opportunity to attend the new French Immersion program school alongside their younger siblings who are being redirected in accordance with Option 6a as described in Board Report 24158 and Appendix D;

**THAT** the Halton District School Board grant transportation to legacy exempted students in accordance with Option 6a, as described in Board Report 24158 and Appendix D; and

**THAT** the Halton District School Board establishes To Be Determined areas for Zone 18, and the Milton Education Village (zones 25 and 26), which will be reviewed at a later date, prior to the occupation of new development.

---

## 1. Analysis

Based on the Boundary Review Process that has been undertaken up to this point, and community support from the feedback survey results, the BRSC has endorsed Option 6a, with the recommended boundaries shown in Figure 1 and Figure 2.

The new program boundaries will take effect as early as January 2025, with the majority of changes taking place in September 2025, and September 2027 tentatively, when Milton #13 PS opens. The following legacy exemptions will be granted:

1. The majority of French Immersion students currently attending their programs in grades 2-7 for the 2024/2025 school year, except for Zone 4, 5, and 6 which will all move to Tiger Jeet Singh PS;
2. English Programs in Zone 12 will be granted legacy exemptions at Viola Desmond PS, given the community's small size.
3. Students that are currently attending zone MILT13, 19, 20, 21, 22, and 23 (rural) as of January 7, 2025, will be granted legacy exemption to Cedar Ridge PS until Milton #13 PS opens in 2027 (tentatively), where Grades JK-7 of the same zones will move to their new school (a total of 2 moves for those students).
4. There is currently insufficient development information for Zones 18, 25, and 26, to establish school boundaries for these areas. Once adequate data is available, these areas will be assigned to a school as part of a boundary review process prior to any students moving into the area (either Pathway A or B).

Given legacy exemption requirements, and the later opening date for Milton #13 PS, the full implementation of the boundary changes will occur over several years. All new boundaries will be established once Milton #13 PS opens, tentatively for September 2027. For each transition, Planning Services provides the following mapping to represent how Option 6a will be implemented.

1. [Option 6a - 2025 to 2026 - Hawthorne Village PS holding Milton SE #13 ps \(ENG/FI\)](#)
2. [Option 6a - 2027 - Milton SE #13 PS opens \(ENG/FI\)](#)

Planning Services has detailed the phased implementation in [Appendix D](#), which provides a comprehensive description of the boundary changes, including their effective year, considerations for siblings, and transportation planning.

To this end, the Boundary Review Steering Committee (BRSC) thoroughly reviewed the recommendations from the Boundary Review Committee (BRC), revisited the decision-making process, and ultimately recommended Option 6a to the Director, incorporating additional implementation considerations. The BRSC determined that this scenario with specific considerations would:

1. Best meet the criteria as established and prioritized by the BRC;
2. Where possible, minimize disruptions to French Immersion students by allowing legacy exemptions for older siblings, while balancing enrolment pressures at affected schools and minimizing costs where possible;
3. Establish a holding school(s) for Milton SE #13 PS until it opens.
4. Provide existing and future communities direction on what schools they will be attending following the opening of Milton SE #13 PS;
5. Addresses FI program viability by reducing the number of schools offering French Immersion (a total of 2 programs were removed, Viola Desmond PS and Cedar Ridge PS, with no new additions of FI programs in the Town of Milton); and,
6. Best response to the consultation feedback and community questions/concerns.

**Figure 1: South Milton - Milton SE #13 PS Boundary Review - Option 6a ENG maps**

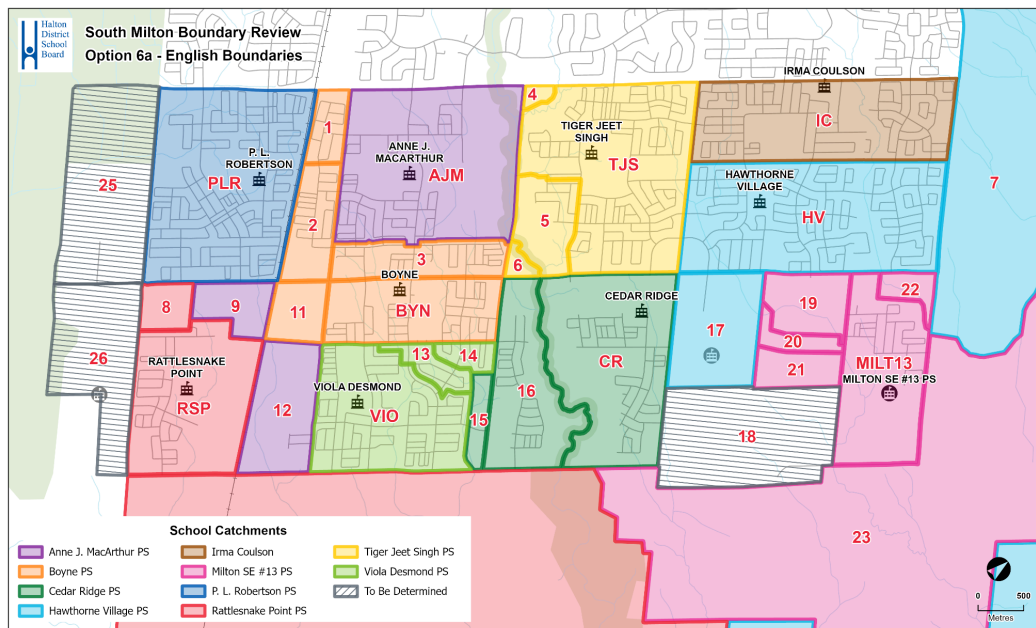
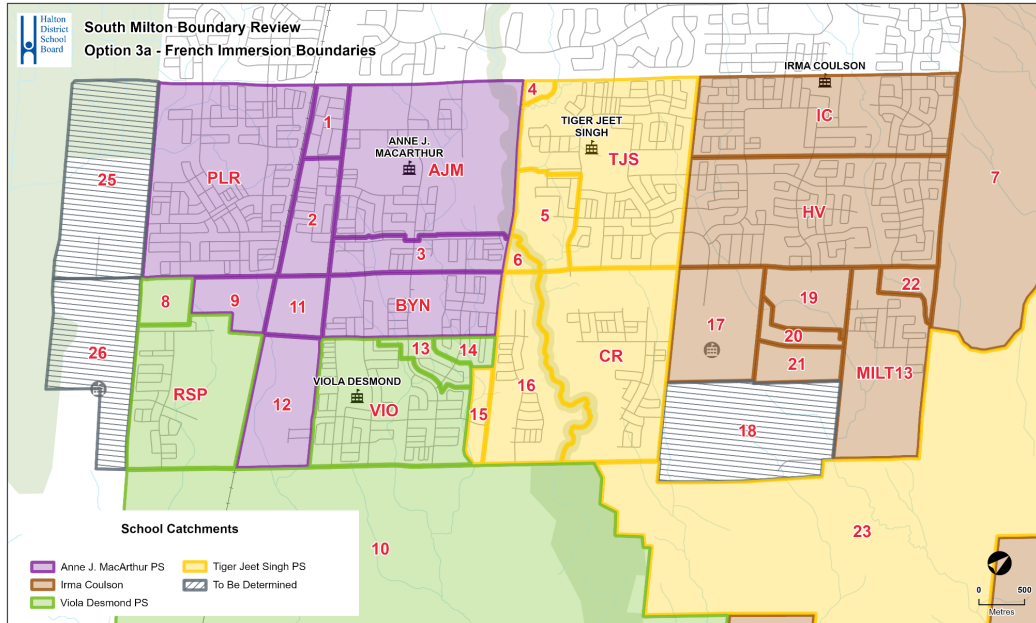


Figure 2: South Milton - Milton SE #13 PS Boundary Review - Option 6a FI map



**Implementation:**

Viola Desmond PS English Redirection

Since the spring of 2020, a redirection has been in place for new students between Grades SK-8 moving into the Viola Desmond PS community, to attend Boyne PS until such a time pressures were relieved or a new boundary review was implemented. As of September 2025, this redirection will end. All Grades JK-6 students in the English Track program attending Boyne PS as of June 30, 2024, in Zones VIO, 13, and 14, will return to Viola Desmond PS. Families wishing to stay at Boyner PS can apply for out-of-area transfers. Grade 8 students will be legacy exempted to graduate at Boyne PS, with transportation in accordance with the Board's policy.

Viola Desmond PS French Immersion Redirection

As per Option 6a, the BRSC agrees to provide a legacy exemption to the Grades 2-8 French Immersion students that are currently attending Viola Desmond PS and begin phasing out the French Immersion program year-over-year starting with Grade 2 in 2025.

Legacy-exempted students from Grades 3-8 will be granted transportation to Viola Desmond PS, as per the Transportation Policy.

For younger siblings in French Immersion, as there will be no Grade 2 French Immersion program at Viola Desmond PS, the older siblings will be given the option to attend Anne J MacArthur PS or PL Robertson PS based on their address. Transportation will be provided, as per the Transportation Policy.

### Anne J. MacArthur PS English Track and French Immersion Redirection for Zones 4, 5, and 6

All Grades JK-7 students in the English Track or French Immersion program attending Anne J. MacArthur PS in Zones 4, 5, and 6, will be redirected to Tiger Jeet Singh PS effective September 2025. Students wishing to stay at Anne J. MacArthur PS can apply for out-of-area transfers.

### Irma Coulson PS French Immersion Redirection Zone 16 and Zone CR

These zones are currently attending Irma Coulson PS. Zone 16 and Zone CR, FI program are currently attending Irma Coulson PS, and will be redirected to Tiger Jeet Singh PS starting with grade 2 and one grade added in subsequent years. Current Irma Coulson PS students in this area will be legacy-exempted for grades 3-8. Transportation will be provided, as per the Transportation Policy.

New FI students moving into the current FI program in Grades 2-8 will be directed to Tiger Jeet Singh PS. Transportation will be provided, as per the Transportation Policy.

### Milton SE #13 PS boundaries students attending Cedar Ridge PS as of January 7, 2025

All students in grades JK-7 that reside in the future Milton SE #13 PS boundary (MILT13, 19, 20, 21, 22, and 23), currently attending Cedar Ridge PS as of January 7, 2025, will be granted legacy exemptions. Transportation will be provided, as per the Transportation Policy.

The younger siblings in this scenario of older students who don't qualify for a legacy exemption at Cedar Ridge PS may have the opportunity to move to Hawthorne Village PS to remain with their younger sibling(s). Transportation will be provided, as per the Transportation Policy.

Once Milton SE #13 PS opens, tentatively for September 2027, all grades JK-7 students in Zones MILT13, 19, 20, 21, 22, and 23 (non-rural) will move to the new school, with no legacy exemptions provided.

### Milton SE #13 PS boundaries new students moving in after January 7, 2025

All new registrations from grades JK-8 moving into the area after January 7, 2025, will be directed to Hawthorne Village PS. Transportation will be provided, as per the Transportation Policy.

Older students who will be legacy exempted at Cedar Ridge PS may have the opportunity to attend Hawthorne Village PS to stay with their younger sibling(s). Transportation will be provided, as per the Transportation Policy.

Once Milton SE #13 ps opens, tentatively for September 2027, all grades JK-7 students in Zones MILT13, 19, 20, 21, 22, and 23 (non-rural) will move to the new school, with no legacy exemptions provided.

## Grade 8 Legacy Exemptions - Transportation

For all other zone changes proposed as part of Option 6a, the BRSC recommended that all affected zones allow students who will be in Grade 8 for the 2025/2026 school year to be granted legacy exemption as well as transportation to their home school, as per the Transportation Policy.

### **Director of Education Recommendation:**

The Director and Administrative Council reviewed the recommendation from the BRSC and concurred with their rationale for moving it forward to the Board for consideration and approval. The rationale for Option 6a with additional considerations was as follows:

1. Best addresses the criteria identified during the boundary review process;
2. Provides a balance of overall enrolment across schools in the study areas;
3. Produces viable French Immersion programs;
4. Clear identifiable boundaries that represent a neighbourhood scale;
5. Keeps neighbourhood communities together where possible;
6. Maximizes opportunities to walk and ride to school, using active modes of transportation, by keeping current walking patterns and conditions and reduces the reliance on transportation services; and,
7. Where transportation is required, distances are minimized to the best extent possible.
8. End the temporary redirection from Viola Desmond PS to Boyne PS.

Ultimately, the Director recommended the Halton District School Board implement the boundaries as outlined in Option 6a as modified by the BRSC effective September 2025.

### **Communication Plan following approvals:**

Subject to final approval from the Board of Trustees, staff will communicate to the broader community the outcome of the review and the decision of the Board. They will also be advised of the transition planning process to best accommodate the students moving to new schools in their respective years of implementation.

Below is the detailed plan for the communication rollout following Board approval on January 7, 2025:

1. The Trustee, school administrators at the elementary schools impacted, and Halton Transportation Services will be notified.
2. School administrators will be required to identify redirected students in our electronic student management system at the time of registration.
3. The "[How am I affected?](#)" tool on the boundary review webpage will be posted and available for public use.
4. Find My School tab on the HDSB website will be revised to incorporate the redirection of residential properties to the schools mentioned in this report.

5. School Transportation will provide information and bussing plans for the families being redirected upon registration.
6. Human Resources will adjust the staffing for the schools impacted by these recommendations as required.

## 1.1 Governance Alignment

The Board of Trustees is responsible for determining the attendance areas for schools throughout its jurisdiction. The purpose of this report is to outline the recommended option that was developed throughout the Boundary Review Process, as presented by the Director of Education, in accordance with the Board's School Boundary Review(s) Administrative Procedure ([link](#)).

As per the above, the purpose of this report is to present the Director's recommendation, which was guided by the BRC and BRSC, to the Board of Trustees for consideration and approval, to be implemented starting as early as September 2025. As per the Board's Governance By-law, the report is to be presented twice to the Board of Trustees (see Appendix C of Governance By-law), and final approval will be sought on January 7, 2025

## 1.2 Alternatives

There are three (3) alternatives to the South Milton & Milton SE #13 ps Boundary Review Study process. They are as follows, along with a brief rationale (more information in Section 2):

- [South Milton / Milton SE #13 Boundary Review - Current](#): If the Board determines that the options presented as part of this report are not suitable, it may decide to not proceed with any changes, and maintain the status quo. A new process would be required, however, as certain schools in the study area need relief from enrolment pressures, and Milton SE #13 PS requires a future boundary.
- [South Milton / Milton SE #13 Boundary Review - Option 3a](#): The Board may choose to select the second most preferred option of the feedback received from the Public Information Meeting (PIM). The majority of the desired outcomes would be met, however not as effectively as the recommended option presented herein.
- [South Milton / Milton SE #13 Boundary Review - Option 8a](#): The Board may choose to select the least preferred option of the feedback received from the PIM. All desired outcomes would be met, and there would be more efficiencies with further collapsing an FI program, but that would be outweighed by the impacts to the community in accelerating this process, and would run contrary to the work of the BRC's preferred options. The benefits are therefore outweighed by the impacts.

Based on the above, staff continue to recommend that Option 6A proceed, as presented.

## 2. Background

At the February 7, 2024 Board meeting the Board of Trustees approved the following Recommendation as per [Board Report 24018](#):

***BE IT RESOLVED THAT*** the Halton District School Board direct staff to complete a boundary review for ERA 302 Bristol (formerly ERA 120) and ERA 304 Boyne (Formerly ERA 127) to integrate communities to their local school, establish new boundaries for Milton SE #13 ps, and balance enrolments at established schools for both the English and French Immersion programs.

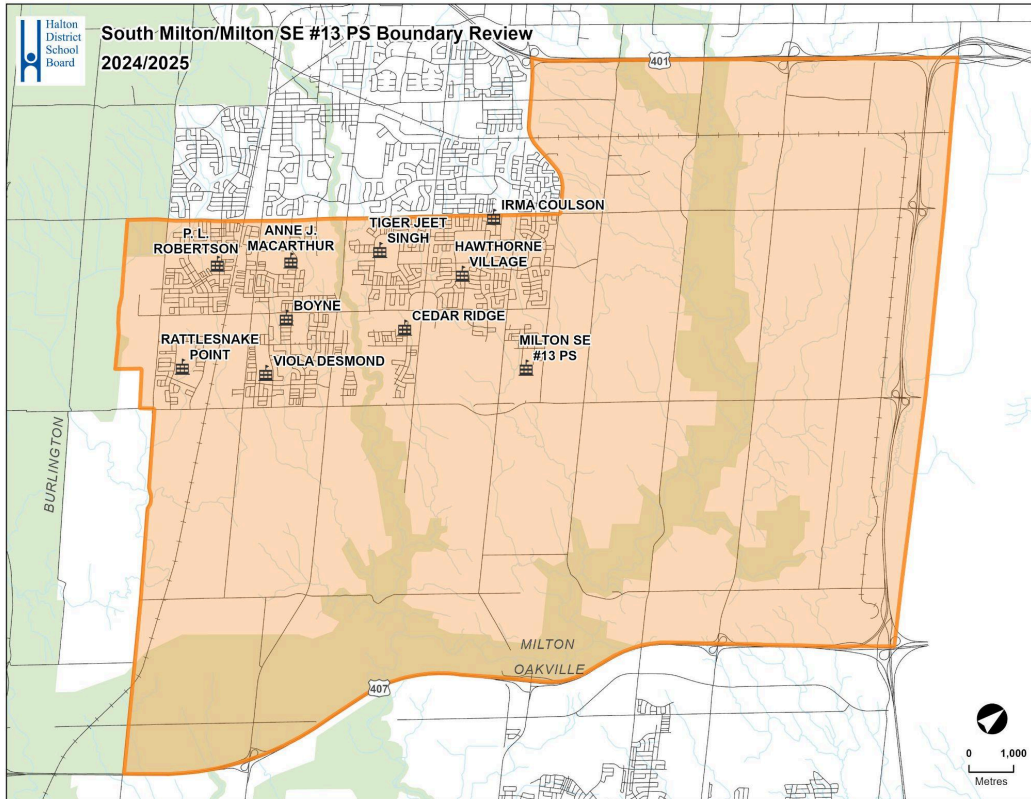
The boundary review was proposed to address several accommodation concerns south of Derry Road in the Town of Milton. this includes

- a. Redirecting holding students who live within walking distance of Tiger Jeet Singh PS to their local community school;
- b. Implement additional boundary changes to Viola Desmond's boundary to cease the in-effect redirection, caused by high student yields in the area;
- c. Re-distribute future growth areas to schools with sufficient space;
- d. Establish the funded Milton SE #13 ps boundaries, which is set to open in September 2027, and,
- e. Review the distribution of French Immersion in schools south of Derry Road, and ensure the best distribution of students to offer a sustainable program.

Figure 3 identifies the study area for the proposed boundaries.



**Figure 3: South Milton & Milton SE #13 PS Boundary Review Study Area map**



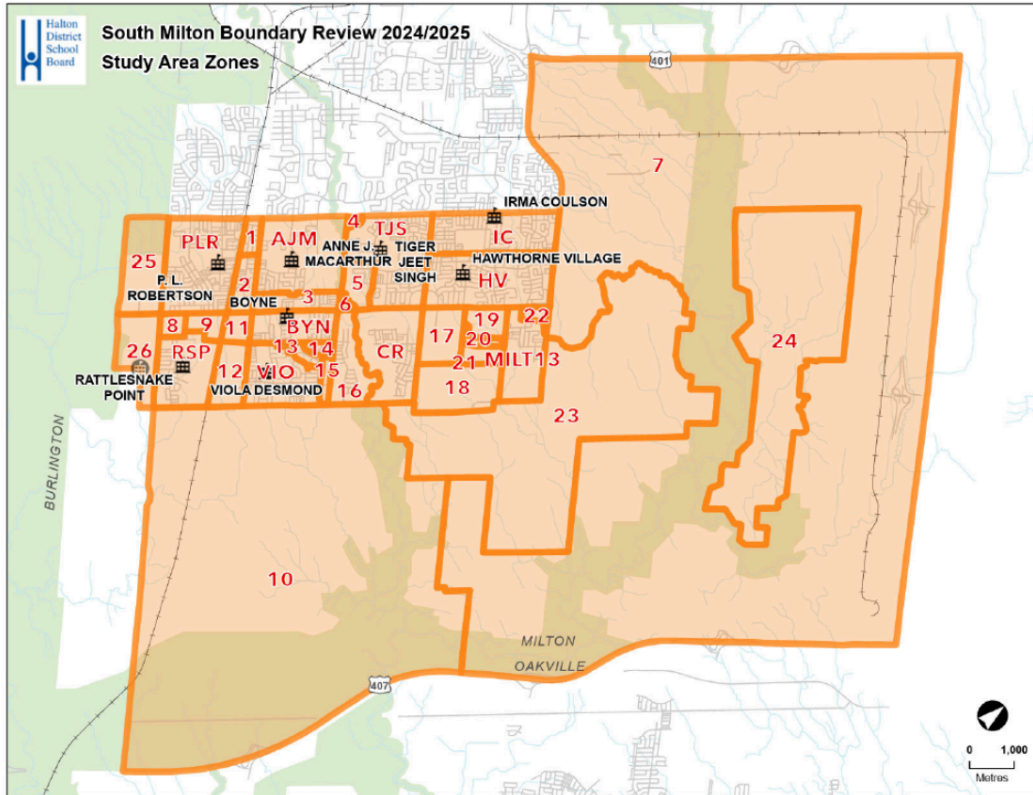
**Discussion:**

A Boundary Review Steering Committee (BRSC) was established to lead the school boundary review process with the first meeting on May 24, 2024. A Boundary Review Committee (BRC) was established and held six (6) meetings in the period between September 25, 2024 to November 12, 2024.

Data that the BRC examined included:

1. Enrolment data, school capacity including building on the ground (OTG) and maximum capacity (with portables), building utilization, and estimated number of portables required in the next ten (10) years.
2. Information on school programs, viable programs, and walking distances.
3. Viability of program (student enrolment to sustain programs in an educationally sound and fiscally responsible way).
4. A ten-year enrolment projection for each scenario proposed including proposed transitions by year and discussion points.
5. Program boundary maps for the English and French Immersion programs of the current scenario, as well as each option developed as part of the process.
6. A zone map was provided for ease of reference for the BRC and BRSC (Figure 4).

**Figure 4 : South Milton & Milton SE #13 PS Zone Map**



The BRC initially reviewed three (3) options developed by the BRSC. During the process, ten (10) additional options were generated and assessed as per the established criteria. A total of 13 options were considered by the BRC (for more information, refer to the [website](#)).

The Boundary Review Committee (BRC) thoroughly reviewed criteria and engaged in in-depth discussions to ensure minimal impacts on students, addressing key concerns such as active transportation to schools, providing enrollment relief to overcrowded schools, and distributing future student enrollments more evenly. The committee also carefully considered concerns about the potential loss of French Immersion (FI) programs and the viability of these programs in the affected schools. These discussions and evaluations culminated in the development of three (3) preferred options: 3a ([link](#)), 6a ([link](#)), and 8a ([link](#)), which aim to balance these priorities effectively.

On November 4, 2024, the virtual Public Information Meeting was live-streamed ([link](#)). The invitation was sent to all impacted school communities, including instructions on accessing the live-stream and participating by posting questions and comments on the live Google Form during the virtual meeting. Both the question forum and the Public Information Meeting presentation were made available to the public in advance of the meeting to allow time to formulate questions for the members of the BRSC. This forum provided the opportunity for public input on the preferred options both in advance of the meeting.

At the Public Information Meeting, Board staff and school representatives of the BRC shared information on the process, and the recommended options responded to questions regarding the process, and explained the feedback process. There were a total of 140 views and a peak of 40 concurrent viewers for the meeting. The facilitators at the meeting received a total of eight (8) questions, where several were answered during the meeting ([summary accessible here](#)).

The public was asked to provide their insights on a feedback form directly on a link provided on the Board's website. All feedback was to be submitted by November 8, 2024, using the Public Information Feedback Form. A total of 81 [feedback responses](#) were submitted.

The BRC had its final meeting on November 12, 2024, (in person) at Elsie MacGill SS. The focus for this evening was to analyze the data from the Public Information Feedback responses regarding the three (3) options presented at the Public Information Meeting ([summary accessible here - starting at slide 12](#)) and to reach a consensus on which option(s) they wanted to suggest to the BRSC to present to the Director of Education for consideration. It was concluded that:

1. Although all criteria were highly ranked, the Public Feedback showed the three (3) most important criteria to consider are:
  - a. Student experience
  - b. Proximity to school
  - c. Stable long-term boundaries
2. All three (3) options were carefully evaluated and determined to meet the established criteria; however, [Option 6a](#) was identified as best aligned with these priorities. It is important to acknowledge the significant volume of feedback received from the PL Robertson PS community, which has been thoroughly considered in the decision-making process. While this feedback is not to be disregarded, it is also notable that other communities did not express a strong preference for any of the remaining options. This broader context helped guide the recommendation of Option 6a as the most balanced and effective choice.
3. While [Option 8a](#) ability to address the review's purpose is the most effective (especially in ensuring FI program viability), that benefit is offset by the level of disruption to students that it may create, making it a less appealing choice for the community overall. That said, Staff is of the opinion that this option could be implemented at a later date after either of the alternate options has time to be implemented and monitored to assess program quality and viability. A further collapse of FI programming could be explored at a future boundary review if numbers become unsustainable.
4. [Option 3a](#), which maintains the French Immersion program at Viola Desmond Public School, is considered a viable option. However, it is not being recommended due to the feedback received and the need to provide enrollment relief to Viola Desmond PS. All else being relatively equal, it is this factor that makes this option less favorable when compared to 6a.

Option 6a and Option 3a were the only options recommended by the Boundary Review Committee (BRC) for consideration by the Boundary Review Steering Committee (BRSC), with a preference given to Option 6a.

The above concluded the Boundary Review Committee and Public consultation components of the South Milton & Milton SE #13 PS Boundary Review Study process, which informed the BRSC and Director recommendations presented as part of this report.

### **Options Reviewed by BRC:**

As additional background, there were a total of twenty (20) options reviewed by the Boundary Review Committee. They are as follows:

- [South Milton / Milton SE #13 Boundary Review - Current](#)
- [South Milton / Milton SE #13 Boundary Review - Option 1](#)
- [South Milton / Milton SE #13 Boundary Review - Option 2](#)
- [South Milton / Milton SE #13 Boundary Review - Option 3](#)
- [South Milton / Milton SE #13 Boundary Review - Option 3a](#)
- [South Milton / Milton SE #13 Boundary Review - Option 4](#)
- [South Milton / Milton SE #13 Boundary Review - Option 5](#)
- [South Milton / Milton SE #13 Boundary Review - Option 5a](#)
- [South Milton / Milton SE #13 Boundary Review - Option 6](#)
- [South Milton / Milton SE #13 Boundary Review - Option 6a](#)
- [South Milton / Milton SE #13 Boundary Review - Option 7](#)
- [South Milton / Milton SE #13 Boundary Review - Option 7a](#)
- [South Milton / Milton SE #13 Boundary Review - Option 8](#)
- [South Milton / Milton SE #13 Boundary Review - Option 8a](#)

For more information on why certain options were not selected to advance for consideration by the BRSC and/or Director of Education, please review the minutes and recording of the BRC meeting presented on the dedicated [Boundary Review Website](#).

### **Communications Plan Details Leading up to Board approval:**

A dedicated website was created on the Board website ([link](#)) and shared as part of the initial communications to the community. Throughout the process, the public was encouraged to send their inquiries about the boundary review through email at [southmiltonbr@hdsb.ca](mailto:southmiltonbr@hdsb.ca).

Following the approval of [Board Report 24018](#), a communication was sent to the community on February 14, 2024, announcing the approval of the South Milton / Milton #13 Public School Boundary Review ([Link](#)). This announcement prompted a few questions from community members seeking clarification about the review and its potential impact on them.

After the initiation of the Boundary Review Steering Committee (BRSC), [Update #1](#) was sent to the

community on May 30, 2024. This update confirmed the schools involved in the boundary review and outlined the next steps to establish a Boundary Review Committee (BRC).

On June 20, 2024, an email to school administrators requesting parent representatives for the BRC. Once the Planning Department received the names of the parent volunteers, an email ([Link](#)) was sent on September 24, 2024, that included the meeting schedule and outlined the responsibilities of BRC members. While several volunteers came forward, not all schools were able to provide two parent representatives.

[Update #2](#) was sent on September 25, 2024, announcing the establishment of the Boundary Review Committee, the date of the first meeting, and the date of the Public Information Meeting on October 23, 2024. An additional notification about the Public Information Meeting was sent to the community on October 18, 2024.

An additional update was sent on November 29, 2024, notifying the community about the Board report, the recommended scenario, and the actions being proposed.

The notes from each meeting and the various versions of the scenarios developed were posted on the website after the BRC meeting on the dedicated [Boundary Review Website](#). Video recordings were also posted for the community to watch as observers.

A final communication will follow the Board's decision, whether the recommended options are approved or not, to ensure the community remains informed (see previous section).

### 3. Financial Impact

Overall, there will be increases in transportation costs to phase out French Immersion at Viola Desmond PS and legacy exemptions proposed as part of this review. In most cases where legacy exemption is provided with transportation. Grade 8 transportation costs will only be incurred for one (1) year.

As for portable needs, phase-ins have been arranged to minimize the number of moves between sites, and instead opting to provide legacy exemptions at schools where portables already exist. Portables no longer required will be removed at a moderate rate to ensure they are not being removed prematurely as trends settle.

Over time, there will be savings once the majority of the plan is implemented with the opening of Milton SE #13 PS and the balancing of enrolment overall.

Budget and funding considerations are as follows:

1. As Milton SE #13 PS opens, the transportation of students to Hawthorne Village PS and Cedar Ridge PS will be removed.
2. The phasing out of the French Immersion program at Viola Desmond PS and the removal of the FI program at Cedar Ridge PS will see an increase in the number of French Immersion students being transported to French Immersion schools. This

will be offset by having fewer French Immersion resources spread out amongst multiple sites.

3. Returning students to their neighbourhood schools and ending the redirection to Boyne PS from the Viola Desmond PS catchment will have a minor decrease in transportation costs, but savings in portable needs on site for Boyne PS long-term.
4. Most students directed to Tiger Jeet Singh PS from North of Louis St. Laurent Ave will not be transported to Tiger Jeet Singh PS. There will be savings in transportation costs.
5. More effective deployment of French Immersion staff and resources, resulting in less duplication and greater efficiency.
6. Redirecting new development from Rattlesnake Point PS to Anne J MacArthur PS will increase the number of students requiring transportation (Zone 9).

## 4. Multi-Year Strategic Plan Alignment

**Priority Alignment:** Learning, Engagement and Achievement ▾

Given the ongoing pressures and accommodation issues at the affected schools, the opening of a new school, a plan to redirect students to a school facility with available space and establish new school boundaries was undertaken with the intent of balancing out current and projected enrolment in the study area, and provide the most stable boundaries for the longest term possible. This supports learning conditions to elevate student achievement identified in our Multi-Year Plan.

## 5. Attachment(s):

- 5.1. APPENDIX A: Boundary Review Steering Committee (BRSC) Members
- 5.2. APPENDIX B: Boundary Review Committee (BRC) Parent Members
- 5.3. APPENDIX C: Milestones and Key Dates
- 5.4. APPENDIX D: Recommended Option 6a as Modified & Implementation Charts



## Board Report Number: 24158

For Future Action

**Respectfully submitted,**

Jennifer Fowler

Superintendent of Education

Dean Barnes

Superintendent of Education

Frederick Thibeault

General Manager of Planning

Curtis Ennis

Director of Education

## **APPENDIX A: BOUNDARY REVIEW STEERING COMMITTEE (BRSC) MEMBERS**

1. Donna Danielli - Trustee for Milton Wards 1 & 2
2. Naveed Ahmed - Trustee for Milton Wards 3 & 4
3. Jennifer Fowler (BRSC Co-chair) - Superintendent of Education
4. Dean Barnes (BRC Co-chair) - Superintendent of Education
5. Frederick Thibeault - (BRSC/BRC Co-chair) General Manager of Planning
6. Michelle D'Aguiar - Senior Analyst
7. Mitch Gundy - Analyst
8. Sonia Zhou - GIS Analyst
9. Marie Hoekstra - GIS Analyst
10. Laureen Choi - Senior Analyst (support)
11. Romar Abalos - Senior Transportation Analyst, Halton Student Transportation Services



## APPENDIX B: BOUNDARY REVIEW COMMITTEE (BRC) PARENT MEMBERS

1. Danielle Masanto - Anne J MacArthur PS
2. Shikha Sareen - Anne J MacArthur PS
3. K. Mark Tomecek - Hawthorne Village PS
4. Ravindra Chennoju - Irma Coulson PS
5. Robyn Seeds - Irma Coulson PS
6. Mahwish Agha - PL Robertson PS
7. Areej Ghazal - PL Robertson PS
8. Pavan Kumar - Rattlesnake Point PS
9. Ginni Malik - Rattlesnake Point PS
10. Imran Haq - Tiger Jeet Singh PS
11. Laura Mitchell - Tiger Jeet Singh PS
12. Himanshu Raina - Viola Desmond PS
13. Anam Yousu - Viola Desmond PS
14. Sachin Deshpande - Cedar Ridge PS
15. Erica Clarke - Cedar Ridge PS

## APPENDIX C: MILESTONES AND KEY DATES

Milestones	Dates
Boundary Review Approved by Board of Trustees	February 7, 2024
Notification of Boundary Approval	February 14, 2024
Boundary Review Steering Committee Meetings	May 24, 2024
Update #1	May 30, 2024
update #2	September 24, 2024
Boundary Review Committee Meeting (BRC) & Boundary Review Steering Committee Meetings	September 25, 2024
Boundary Review Committee Meeting (BRC) & Boundary Review Steering Committee Meetings	October 3, 2024
Boundary Review Committee Meeting (BRC) & Boundary Review Steering Committee Meetings	October 8, 2024
Boundary Review Committee Meeting (BRC) & Boundary Review Steering Committee Meetings	October 17, 2024
Invitation For Public Consultation to the Community	October 18, 2024
Boundary Review Committee Meeting (BRC) & Boundary Review Steering Committee Meetings	October 23, 2024
Feedback Portable Open	October 29, 2024
Reminder Invitation For Public Consultation to the Community	October 29, 2024
Public Information Meeting	November 4, 2024
Feedback Portable Closed	November 8, 2024
Boundary Review Committee Meeting (BRC) & Boundary Review Steering Committee Meetings	November 12, 2024
Boundary Review Steering Committee Meeting	November 18, 2024
Report to Administrative Council	November 25, 2024
Notification of Recommended Option to Affected Community	November 29, 2024
Board Meeting: Recommended Option for information	December 3, 2024
Board Meeting: Recommended Option for approval	January 7, 2025
Notification of Decision to Affected Communities	After Board Approval

**APPENDIX D: RECOMMENDED OPTION 6A AS MODIFIED AND IMPLEMENTATION CHARTS**

[SEE ATTACHMENT LINKED HERE](#)