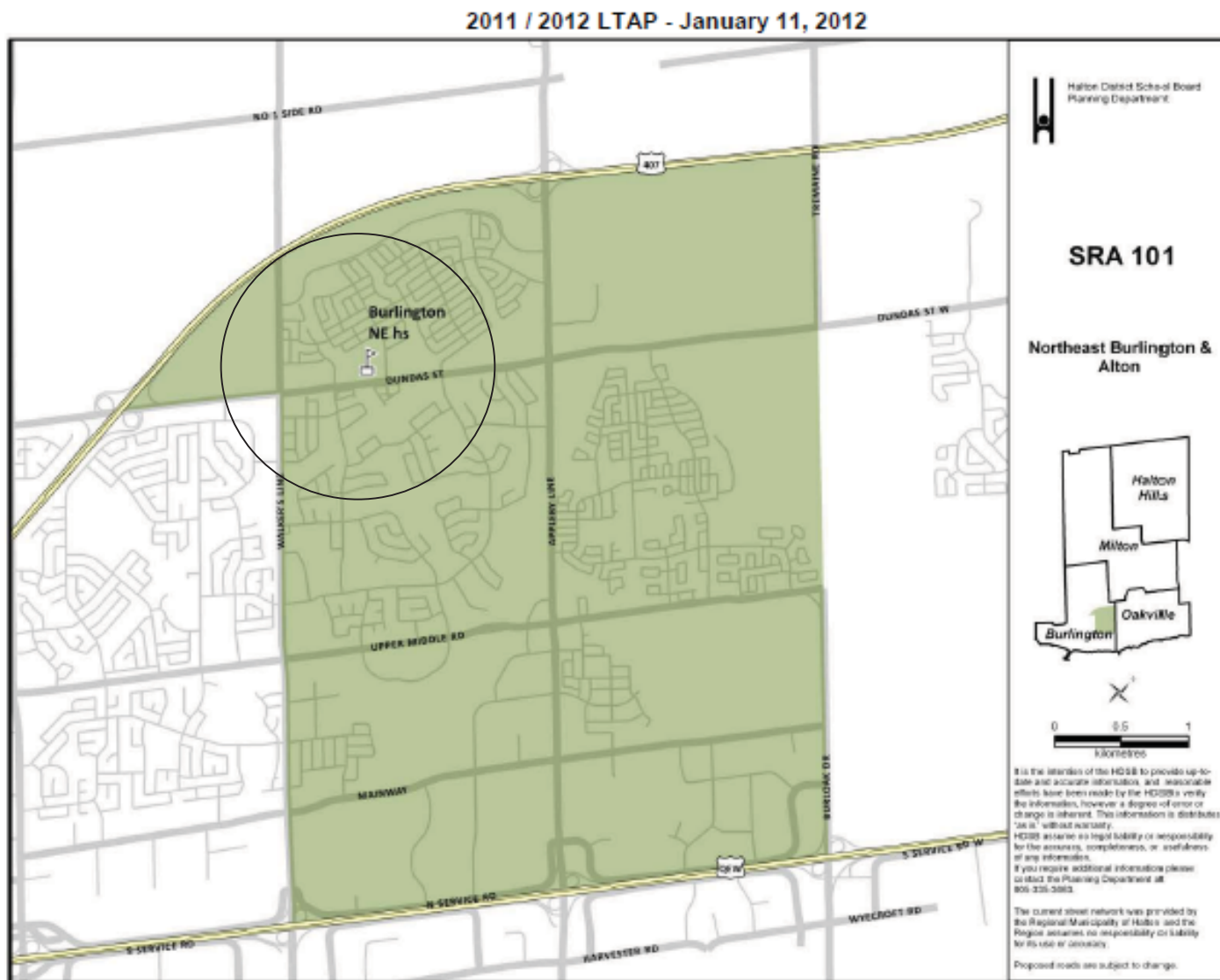


SRA 101 Alton High School Boundary Review

Process for Establishing Boundaries



Purpose of Open House

- To engage community members into the process very early, in order to celebrate new school, share information about building, as well as invite participation in the process.

Purpose of Alton HS Boundary Review

- The mandate of the Boundary Review Committee is to determine who will attend the new high school in the Alton area.

Role of Steering Committee

A Boundary Review Steering Committee is established to lead the school boundary review process.

- *review school enrolments, school capacities and school programs*
- *generate initial boundary options for consideration by the larger Boundary Review Committee (scope)*
- *ultimately make a recommendation to Administrative Council and the Director to present to the Board for decision*

Boundary Review Steering Committee

Family of Schools Superintendent(s) of all affected areas	<ul style="list-style-type: none"> Rob Eatough (Chair of Steering Com.) Dane Tutton
Superintendent of Program	Dane Tutton
Superintendent of Business	Lucy Veerman
Manager from Planning Department	<ul style="list-style-type: none"> Dom Renzella (Manager) Michelle D'Aguiar
Trustees for all of the affected areas	<ul style="list-style-type: none"> Jennifer Hlusko Amy Collard Kristen Lochhead Dianna Bower
Boundary Review Committee Chair (appointed by Director)	<ul style="list-style-type: none"> Dane Tutton (Co-Chair of BRC) Dianna Bower (Co-Chair of BRC)
Superintendent of Student Services	<ul style="list-style-type: none"> David Boag

Role of Boundary Review Committee

The BRC is established to examine the initial options generated by the Boundary Review Steering Committee and to have the opportunity to give feedback.

- it will use criteria to measure the impact and effectiveness of boundary options.
- will review the options generated by the BRSC and will offer suggestions/revisions or suggest new options to be considered
- will decide to either inform the community of the recommended option(s) or to consult the community regarding the recommended option(s).

Criteria to Measure Impact & Effectiveness of Boundary Options

Possible criteria could include but should not be limited to:

- Balance of overall enrolment in each school in the review area to maximize student access to programs, resources, and extra-curricular opportunities.
- Continuity of placement and possible relocation of regional programs within the review area
- Expansion and placement of new ministry or board programs
- Viable numbers in a dual track school to support both English and French programs
- Proximity to schools (walking distances, safe school routes, natural boundaries)
- Accommodation of students in permanent school facilities and minimal use of portable classrooms
- Stable, long-term boundaries
- Cost effectiveness of transportation
- Fiscal responsibilities
- The grand parenting of students in the graduating class
- The number of school moves students have experienced
- Keeping cohorts together
- Other criteria recommended by committee or community members

Composition of BRC

MM Robinson HS – 2 parent reps

Lester B. Pearson HS - 2 parent reps

Nelson HS – 2 parent reps

Robert Bateman HS – 2 parent reps

JW Boich – 2 parent reps

Alexander's – 2 parent reps

Orchard Park – 2 parent reps

Florence Meares – 2 parent reps

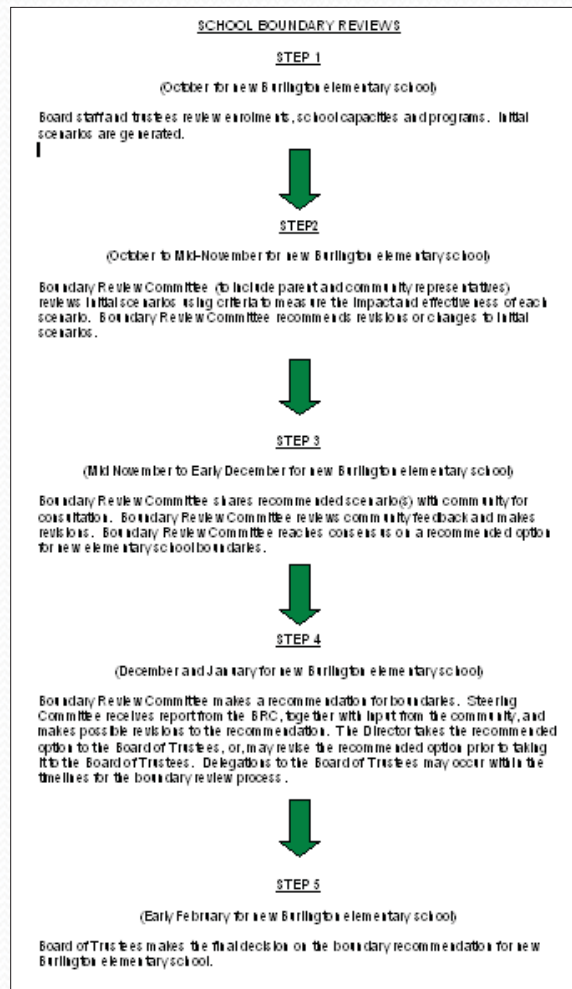
C.R. Beaudoin – 2 parent reps

Kilbride - 2 parent reps (1 FI rep)

Alton Residents - 2 parent reps (CHN, Clark/RM, MMR)

Members of Boundary Review Steering Committee

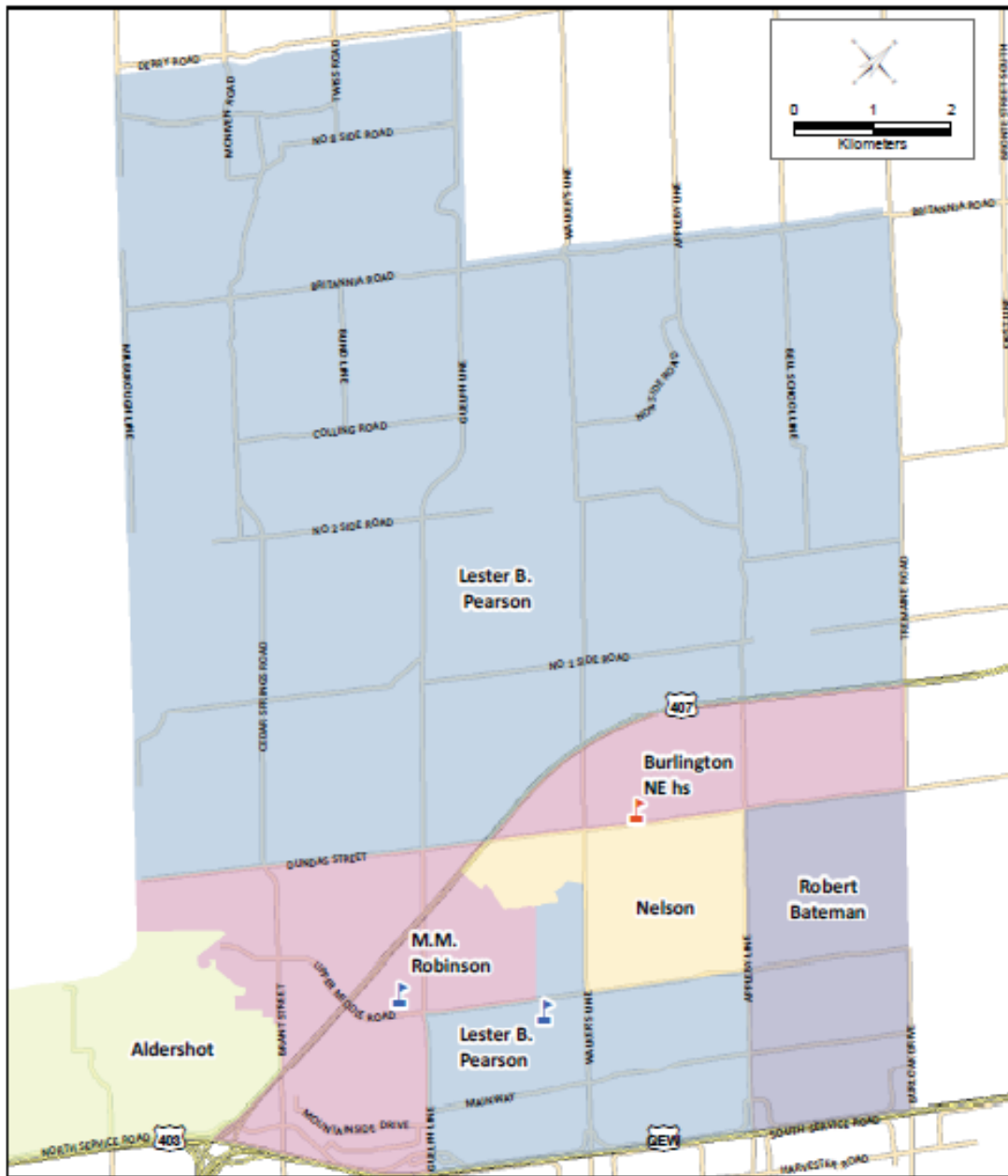
Timelines



Goal is to have process completed by early June 2012.

Boundary Review Assumptions

- The boundary review will focus on identifying the students that will attend the new Alton HS
- While pupil spaces are 1200 OTG, the total capacity is approx. 1500+ students
- Alton HS will be dual track (English/FI)
- There will be no Self-Contained Special Education Placements in the school when it opens in September 2013.



Halton District School Board
Planning Department

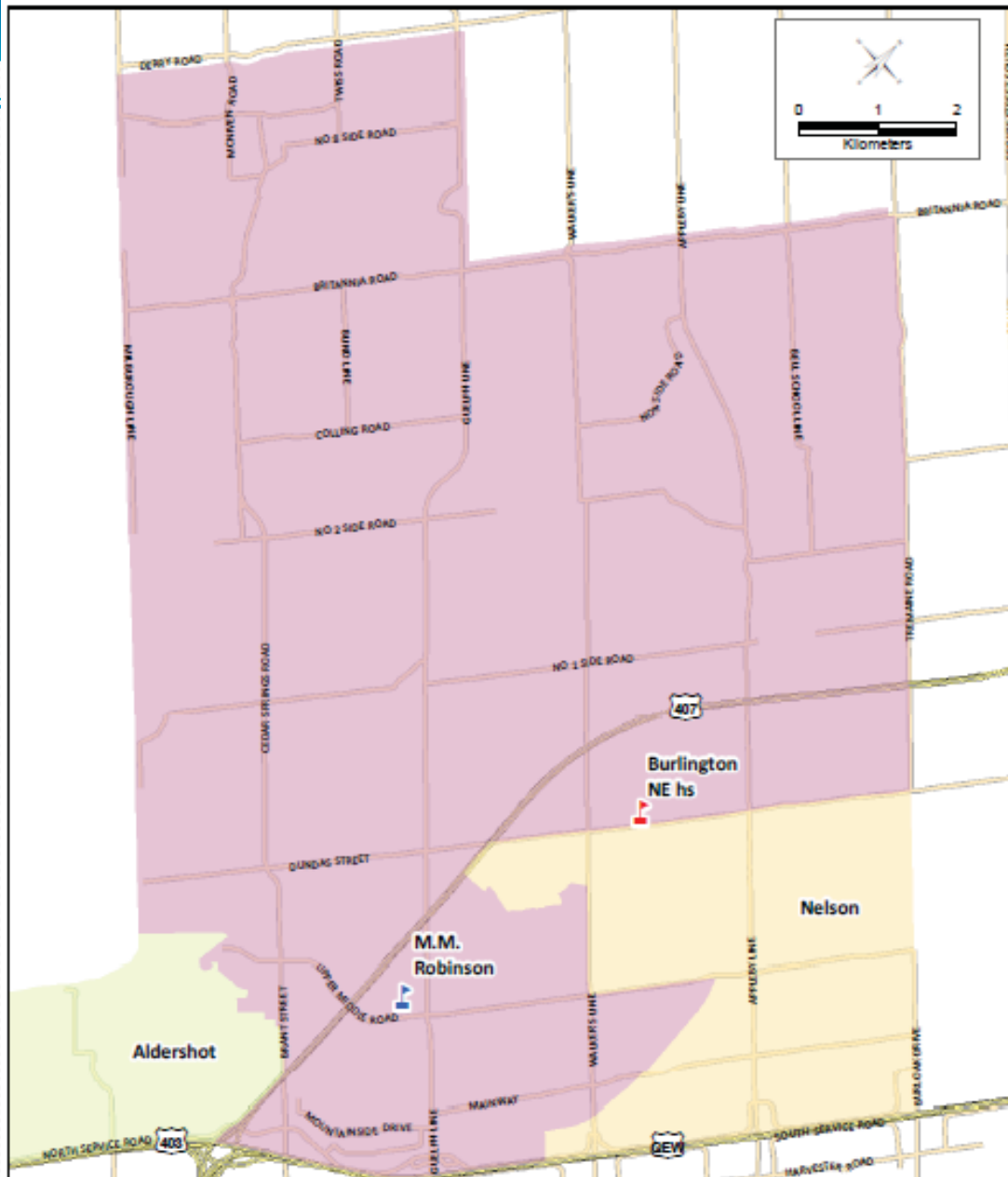


Burlington NE hs Boundary Review English Program 2011-2012 Catchment Areas

The street and school network was provided by the Regional Municipality of Halton and the Region assumes no responsibility or liability for its use or accuracy.

Proposed roads are subject to change.

It is the intention of the HDSB to provide up-to-date and accurate information, and reasonable efforts have been made by the HDSB to verify the information, however a degree of error or change is inherent. This information is distributed "as is" without warranty. HDSB assumes no legal liability or responsibility for the accuracy, completeness, or usefulness of any information. If you require additional information please contact the Planning Department at 905.555.5885.



Hilton District School Board
Planning Department



Burlington NE hs Boundary Review French Immersion 2011-2012 Catchment Areas

The current street network was provided by the Regional Municipality of Halton and the Region assumes no responsibility or liability for its user accuracy.

Proposed roads are subject to change.

It is the intention of the HDSB to provide up-to-date and accurate information, and reasonable efforts have been made by the HDSB to verify the information, however a degree of error or change is allowed. This information is distributed "as is" without warranty. HDSB assumes no legal liability or responsibility for the accuracy, completeness, or usefulness of any information. If you require additional information please contact the Planning Department at 905.555.5885.

Next Steps?

Expression of Interest forms

- Available at 'Feedback Station'
- Available on the Board website at www.hdsb.ca

Note: Expression of Interest forms are due no later than Monday, March 5th (12:00 noon).