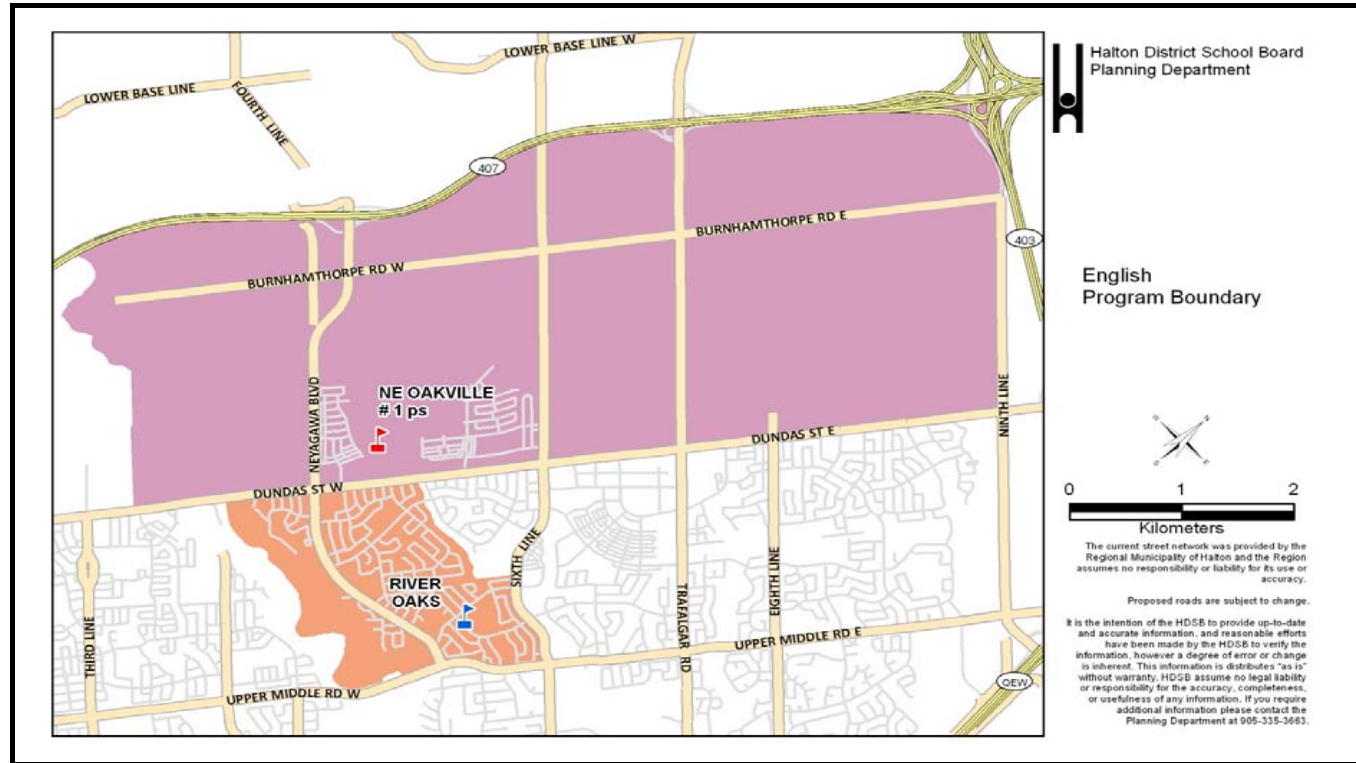
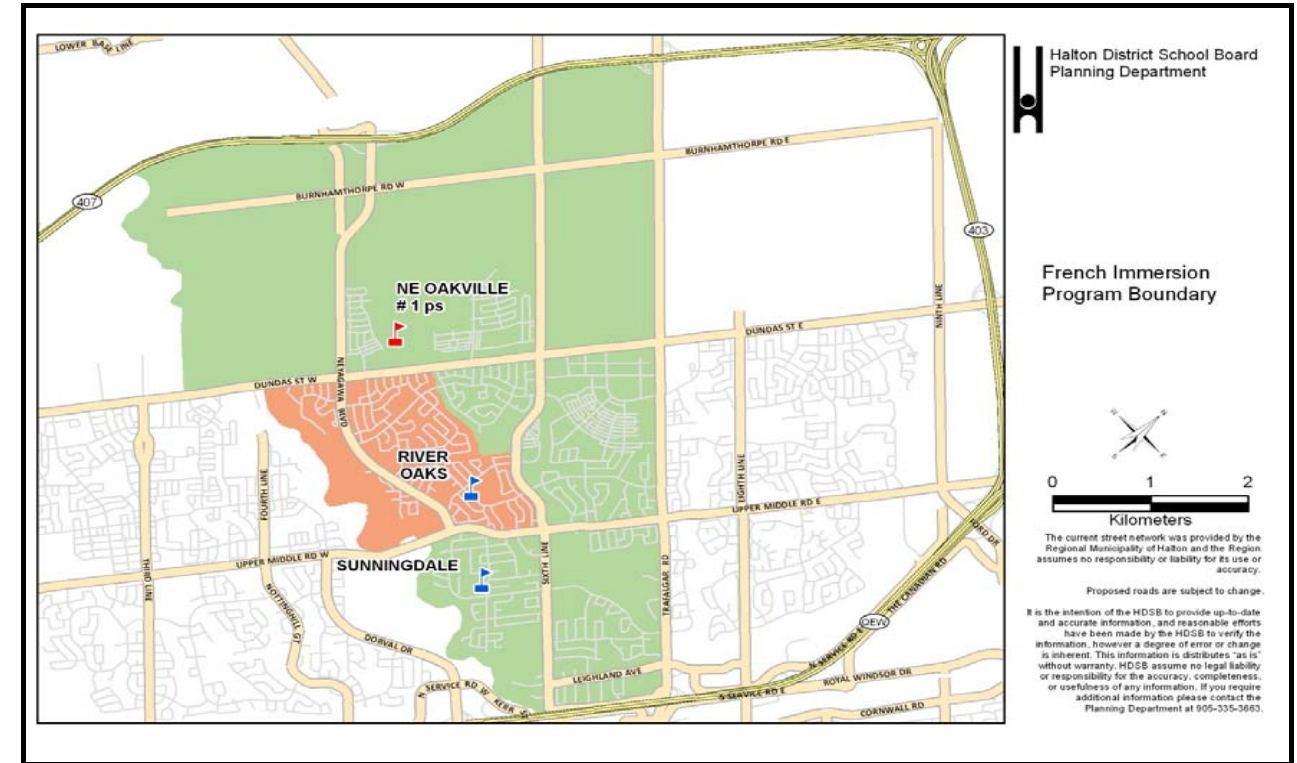


Scenario 9a



Scenario 9a



	Program	OTG	Port	Total	2014	2015	2016	2017	2018	2019	2020	2021	2022	2023	2024
River Oaks PS	ENG	636	12	912	731	471	398	364	337	309	283	261	247	244	241
	FI				0	114	151	187	222	257	292	287	291	288	286
	Total				731	585	549	551	559	566	575	548	538	532	527
	River Oaks Utilization				-95	51	87	85	77	70	61	88	98	104	109
	Percent Utilization				115%	92%	86%	87%	88%	89%	90%	86%	85%	84%	83%
Sunningdale PS	ENG	613	10	843	0	0	0	0	0	0	0	0	0	0	0
	FI				813	757	780	805	813	817	817	845	856	872	884
	Total				813	757	780	805	813	817	817	845	856	872	884
	Sunningdale Utilization				-200	-144	-167	-192	-200	-204	-204	-232	-243	-259	-271
	Percent Utilization				133%	123%	127%	131%	133%	133%	133%	138%	140%	142%	144%
N of Dundas (between Neyagawa & Sixth Line)	ENG	-	-	-	-	396	534	579	638	676	760	887	972	1037	1106
	FI				-	0	0	0	0	0	0	0	0	0	0
	Sub-Total				0	396	534	579	638	676	760	887	972	1037	1106
N of Dundas (between Sixth Line & Trafalgar)	ENG	-	-	-	-	0	64	141	233	339	448	537	609	678	745
	FI				-	0	0	0	0	0	0	0	0	0	
	Sub-Total				0	0	64	141	233	339	448	537	609	678	745
N of Dundas (east of Trafalgar)	ENG	-	-	-	-	0	0	0	12	74	153	233	334	441	557
	FI				-	0	0	0	0	0	0	0	0	0	
	Sub-Total				0	0	0	0	12	74	153	233	334	441	557
N of Dundas (west of Neyagawa)	ENG	-	-	-	-	0	0	0	0	0	0	0	0	0	0
	FI				-	0	0	0	0	0	0	0	0	0	
	Sub-Total				0	0	0	0	0	0	0	0	0	0	0
NE Oakville #1 ps	ENG	776	12	1052	-	396	598	720	883	1089	1361	1657	1915	2156	2408
	FI				-	0	0	0	0	0	0	0	0	0	0
	Total				0	396	598	720	883	1089	1361	1657	1915	2156	2408
	NE Oakville #1 Utilization				0	380	178	56	-107	-313	-585	-881	-1139	-1380	-1632
	Percent Utilization				0%	51%	77%	93%	114%	140%	175%	214%	247%	278%	310%
Study Total		2025	34	2807	1544	1738	1927	2076	2255	2472	2753	3050	3309	3560	3819

River Oaks PS is a JK-8 ENG school; River Oaks PS will open with a 1-3 FI program September 2015; grade 4 FI will be added September 2016; grade 5 FI will be added September 2017; grade 6 FI will be added September 2018; grade 7 FI will be added September 2019; grade 8 FI will be added September 2020
 There is no change to the English boundary JK-8 south of Dundas Street West
 The French Immersion boundary 1-8 will be the same as the current English boundary

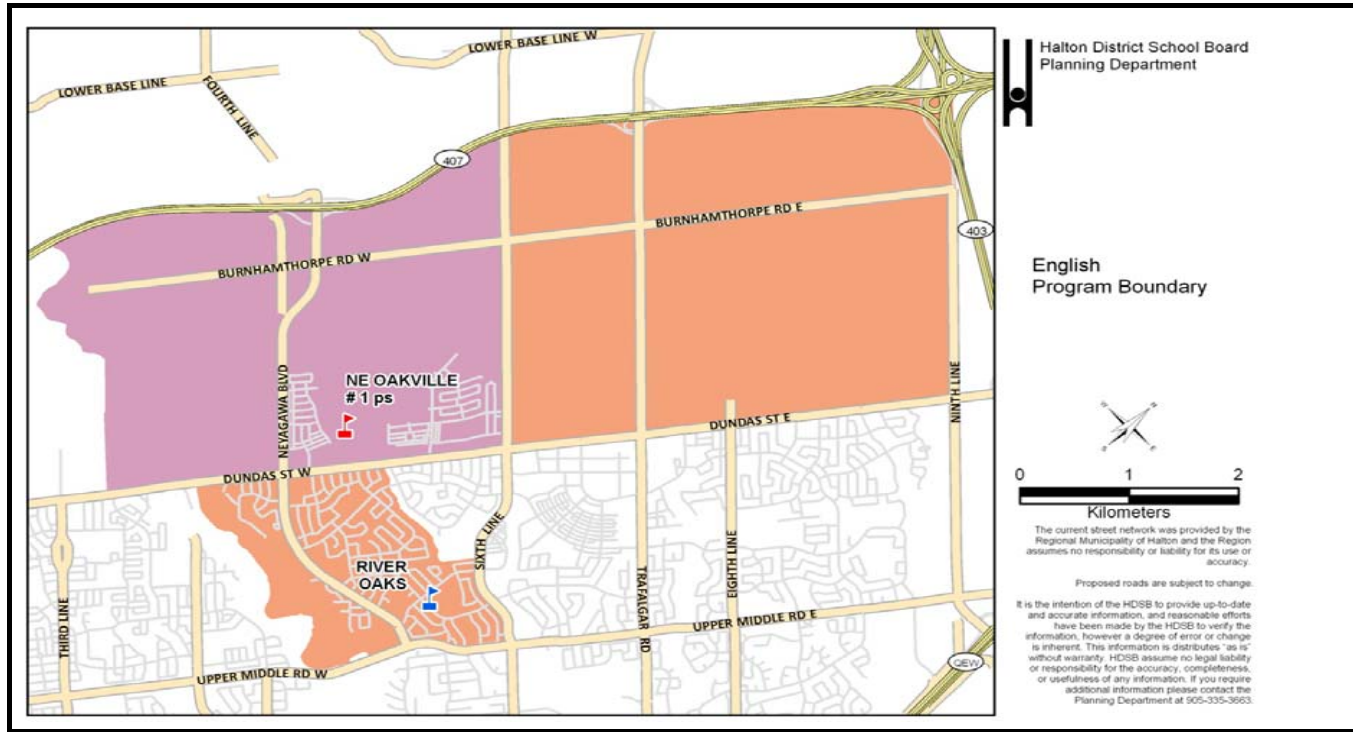
Sunningdale PS is a 1-8 FI school
 French Immersion boundary 1-8 south of Dundas Street West has changed with the creation of the River Oaks FI boundary.
 French Immersion boundary 1-8 includes area north of Dundas Street West:

- East: Trafalgar Road
- West: 16 Mile Creek
- North: Highway 407
- South: Dundas Street West

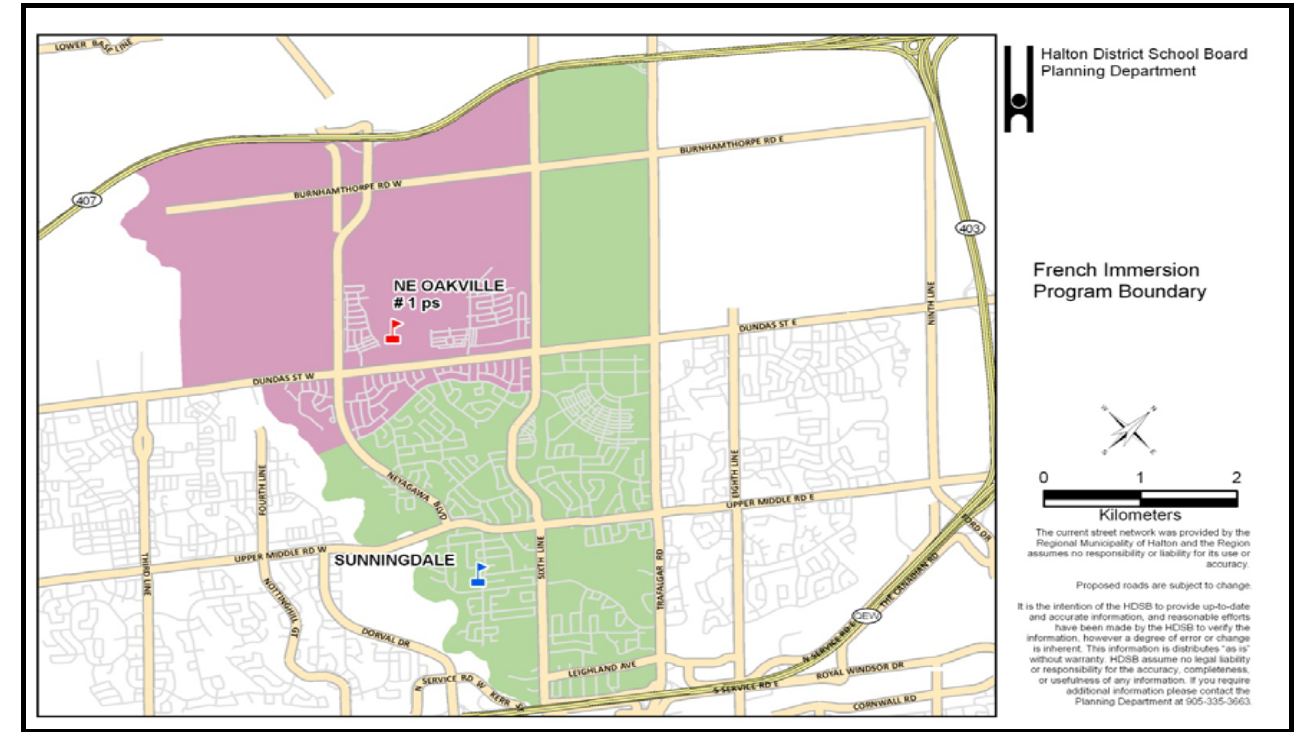
NE Oakville #1 ps opens September 2015 as a JK-7 ENG school; grade 8 ENG will be added September 2016
 English boundary JK-8 is:

- East: Ninth Line
- West: 16 Mile Creek
- North: Highway 407
- South: Dundas Street West

Scenario 10



Scenario 10



	Program	OTG	Port	Total	2014	2015	2016	2017	2018	2019	2020	2021	2022	2023	2024
River Oaks PS	ENG				731	482	482	536	622	772	944	1100	1268	1440	1619
	FI	636	12	912	0	0	0	0	0	0	0	0	0	0	0
	Total				731	482	482	536	622	772	944	1100	1268	1440	1619
	River Oaks Utilization				-95	154	154	100	14	-136	-308	-464	-632	-804	-983
Percent Utilization				115%	76%	76%	84%	98%	121%	148%	173%	199%	226%	255%	
Sunningdale PS	ENG				0	0	0	0	0	0	0	0	0	0	0
	FI	613	10	843	813	721	724	728	716	699	673	670	672	680	683
	Total				813	721	724	728	716	699	673	670	672	680	683
	Sunningdale Utilization				-200	-108	-111	-115	-103	-86	-60	-57	-59	-67	-70
Percent Utilization				133%	118%	118%	119%	117%	114%	110%	109%	110%	111%	111%	
N of Dundas (between Neyagawa & Sixth Line)	ENG				-	379	502	533	579	604	675	794	868	932	1003
	FI	-	-	-	-	94	137	177	216	255	299	326	341	348	354
	Sub-Total				0	473	639	710	795	859	974	1120	1209	1280	1357
N of Dundas (between Sixth Line & Trafalgar)	ENG				-	0	0	0	0	0	0	0	0	0	0
	FI	-	-	-	-	0	0	0	0	0	0	0	0	0	0
	Sub-Total				0	0	0	0	0	0	0	0	0	0	0
N of Dundas (east of Trafalgar)	ENG				-	0	0	0	0	0	0	0	0	0	0
	FI	-	-	-	-	0	0	0	0	0	0	0	0	0	0
	Sub-Total				0	0	0	0	0	0	0	0	0	0	0
N of Dundas (west of Neyagawa)	ENG				-	0	0	0	0	0	0	0	0	0	0
	FI	-	-	-	-	0	0	0	0	0	0	0	0	0	0
	Sub-Total				0	0	0	0	0	0	0	0	0	0	0
S of Dundas (down to River Glen Blvd between 16 Mile Creek & Sixth Line)	ENG				-	0	0	0	0	0	0	0	0	0	0
	FI	-	-	-	-	62	82	102	122	142	162	160	160	160	160
	Sub-Total				0	62	82	102	122	142	162	160	160	160	160
NE Oakville #1 ps	ENG				-	379	502	533	579	604	675	794	868	932	1003
	FI	776	12	1052	-	156	219	279	338	397	461	486	501	508	514
	Total				0	535	721	812	917	1001	1136	1280	1369	1440	1517
	NE Oakville #1 Utilization				0	241	55	-36	-141	-225	-360	-504	-593	-664	-741
Percent Utilization				0%	69%	93%	105%	118%	129%	146%	165%	176%	186%	195%	
Study Total		2025	34	2807	1544	1738	1927	2076	2255	2472	2753	3050	3309	3560	3819

River Oaks PS is a JK-8 ENG school
 English boundary JK-8 includes area north of Dundas Street West:

- East: Ninth Line
- West: Sixth Line
- North: Highway 407
- South: Dundas Street West

Sunningdale PS is a 1-8 FI school
 French Immersion boundary 1-8 includes area north of Dundas Street West:

- East: Trafalgar Road
- West: Sixth Line
- North: Highway 407
- South: Dundas Street West

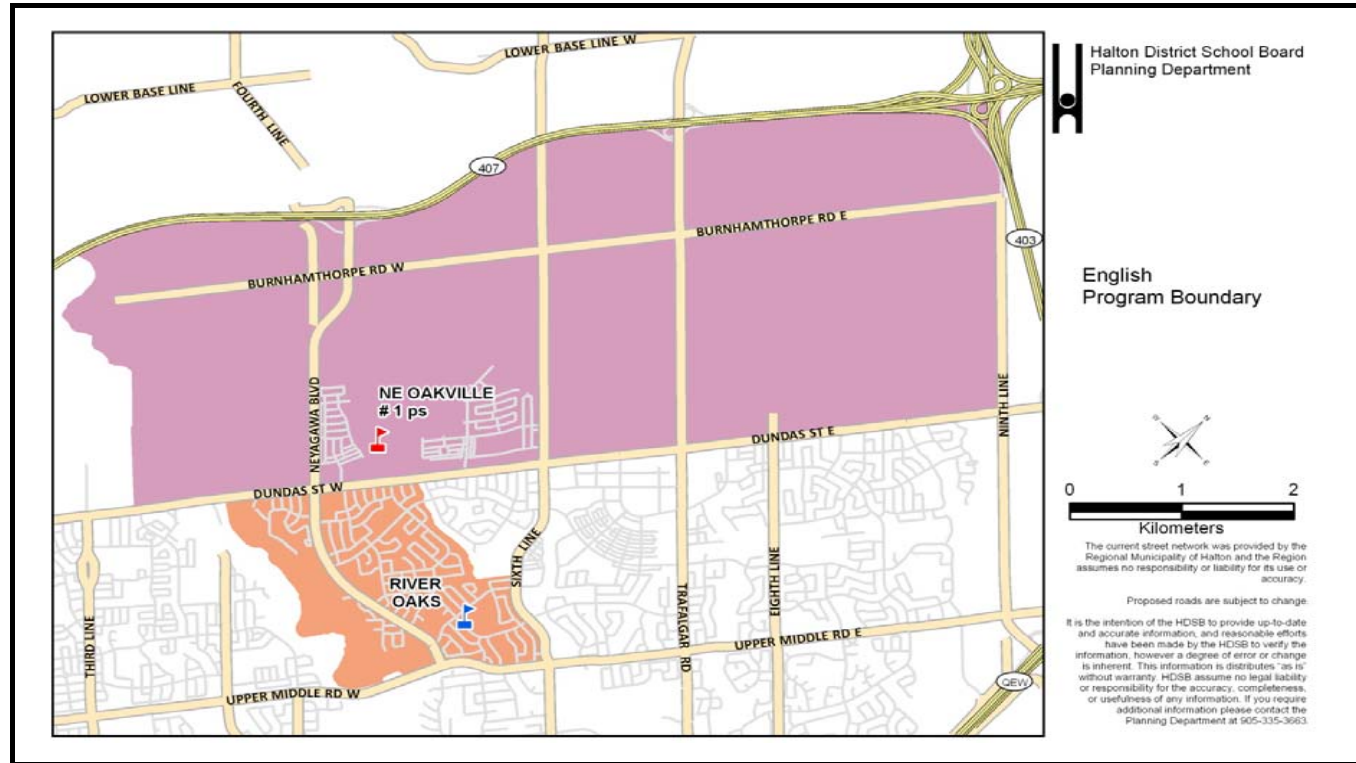
NE Oakville #1 ps opens September 2015 as a JK-7 ENG and 1-3 FI school; grade 8 ENG and grade 4 FI will be added September 2016; grade 5 FI will be added September 2017; grade 6 FI will be added September 2018; grade 7 FI will be added September 2019; grade 8 FI will be added September 2020
 English boundary JK-8 and French Immersion boundary 1-8 is:

- East: Sixth Line
- West: 16 Mile Creek
- North: Highway 407
- South: Dundas Street West

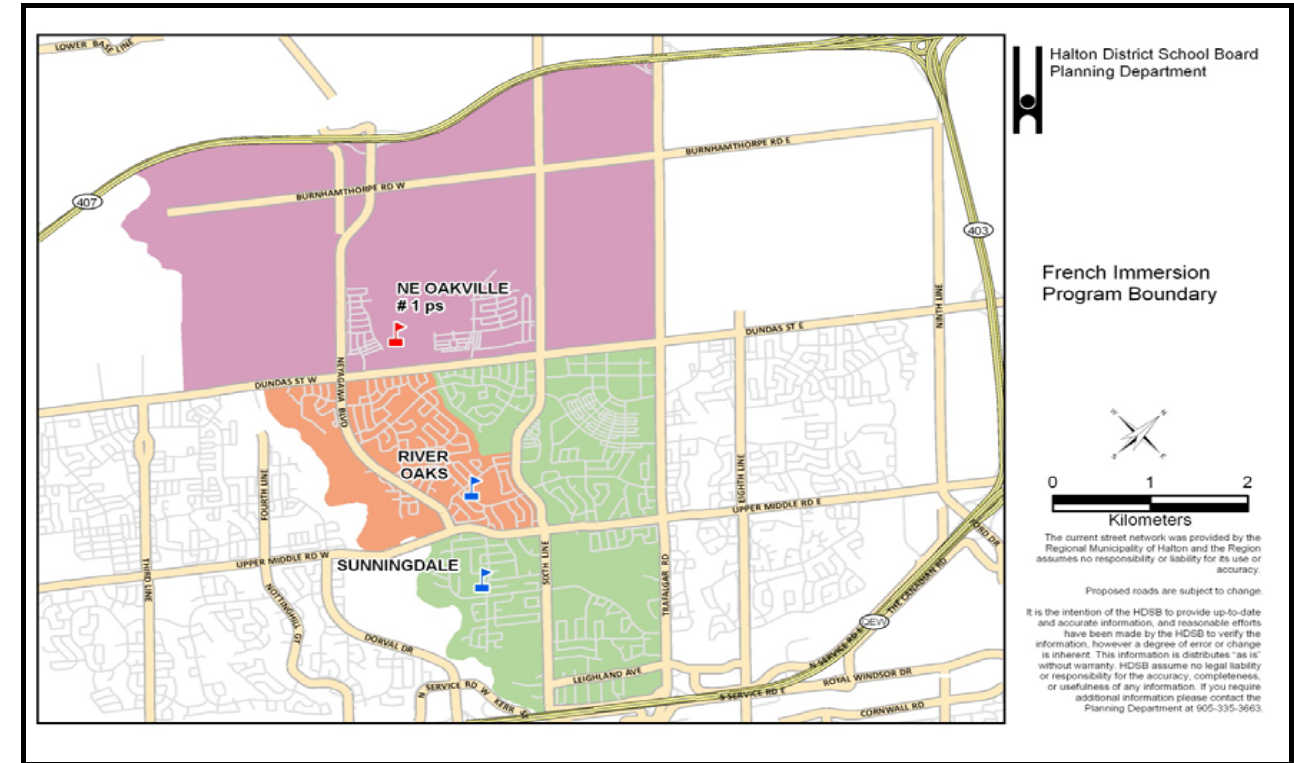
French Immersion boundary 1-8 also includes an area south of Dundas Street West:

- East: Sixth Line
- West: 16 Mile Creek
- North: Dundas Street West
- South: River Glen Blvd

Scenario 11a



Scenario 11a



	Program	OTG	Port	Total	2014	2015	2016	2017	2018	2019	2020	2021	2022	2023	2024
River Oaks PS	ENG	636	12	912	731	471	398	364	337	309	283	261	247	244	241
	FI				0	114	151	187	222	257	292	287	291	288	286
	Total				731	585	549	551	559	566	575	548	538	532	527
	River Oaks Utilization				-95	51	87	85	77	70	61	88	98	104	109
	Percent Utilization				115%	92%	86%	87%	88%	89%	90%	86%	85%	84%	83%
Sunningdale PS	ENG	613	10	843	0	0	0	0	0	0	0	0	0	0	0
	FI				813	646	633	622	591	568	546	544	543	542	538
	Total				813	646	633	622	591	568	546	544	543	542	538
	Sunningdale Utilization				-200	-33	-20	-9	22	45	67	69	70	71	75
	Percent Utilization				133%	105%	103%	101%	96%	93%	89%	89%	89%	88%	88%
N of Dundas (between Neyagawa & Sixth Line)	ENG	-	-	-	-	379	502	533	579	604	675	794	868	932	1003
	FI				-	128	173	212	251	275	299	326	341	348	354
	Sub-Total				0	507	675	745	830	879	974	1120	1209	1280	1357
N of Dundas (between Sixth Line & Trafalgar)	ENG	-	-	-	-	0	64	141	233	339	448	537	609	678	745
	FI				-	0	6	17	30	46	57	68	76	87	95
	Sub-Total				0	0	70	158	263	385	505	605	685	765	840
N of Dundas (east of Trafalgar)	ENG	-	-	-	-	0	0	0	12	74	153	233	334	441	557
	FI				-	0	0	0	0	0	0	0	0	0	0
	Sub-Total				0	0	0	0	12	74	153	233	334	441	557
N of Dundas (west of Neyagawa)	ENG	-	-	-	-	0	0	0	0	0	0	0	0	0	0
	FI				-	0	0	0	0	0	0	0	0	0	0
	Sub-Total				0	0	0	0	0	0	0	0	0	0	0
NE Oakville #1 ps	ENG	776	12	1052	-	379	566	674	824	1017	1276	1564	1811	2051	2305
	FI				-	128	179	229	281	321	356	394	417	435	449
	Total				0	507	745	903	1105	1338	1632	1958	2228	2486	2754
	NE Oakville #1 Utilization				0	269	31	-127	-329	-562	-856	-1182	-1452	-1710	-1978
	Percent Utilization				0%	65%	96%	116%	142%	172%	210%	252%	287%	320%	355%
Study Total		2025	34	2807	1544	1738	1927	2076	2255	2472	2753	3050	3309	3560	3819

River Oaks PS is a JK-8 ENG school; River Oaks PS will open with a grade 1-3 FI program September 2015; grade 4 FI will be added September 2016; grade 5 FI will be added September 2017; grade 6 FI will be added September 2018; grade 7 FI will be added September 2019; grade 8 FI will be added September 2020

There is no change to the English boundary JK-8

The French Immersion boundary 1-8 will be the same as the current English boundary

Sunningdale PS is a 1-8 FI school

French Immersion boundary 1-8 south of Dundas Street West has changed with the creation of the River Oaks FI boundary.

NE Oakville #1 ps opens September 2015 as a JK-7 ENG and 1-5 FI school; grade 8 ENG and grade 6 FI will be added September 2016; grade 7 FI will be added September 2017; grade 8 FI will be added September 2018

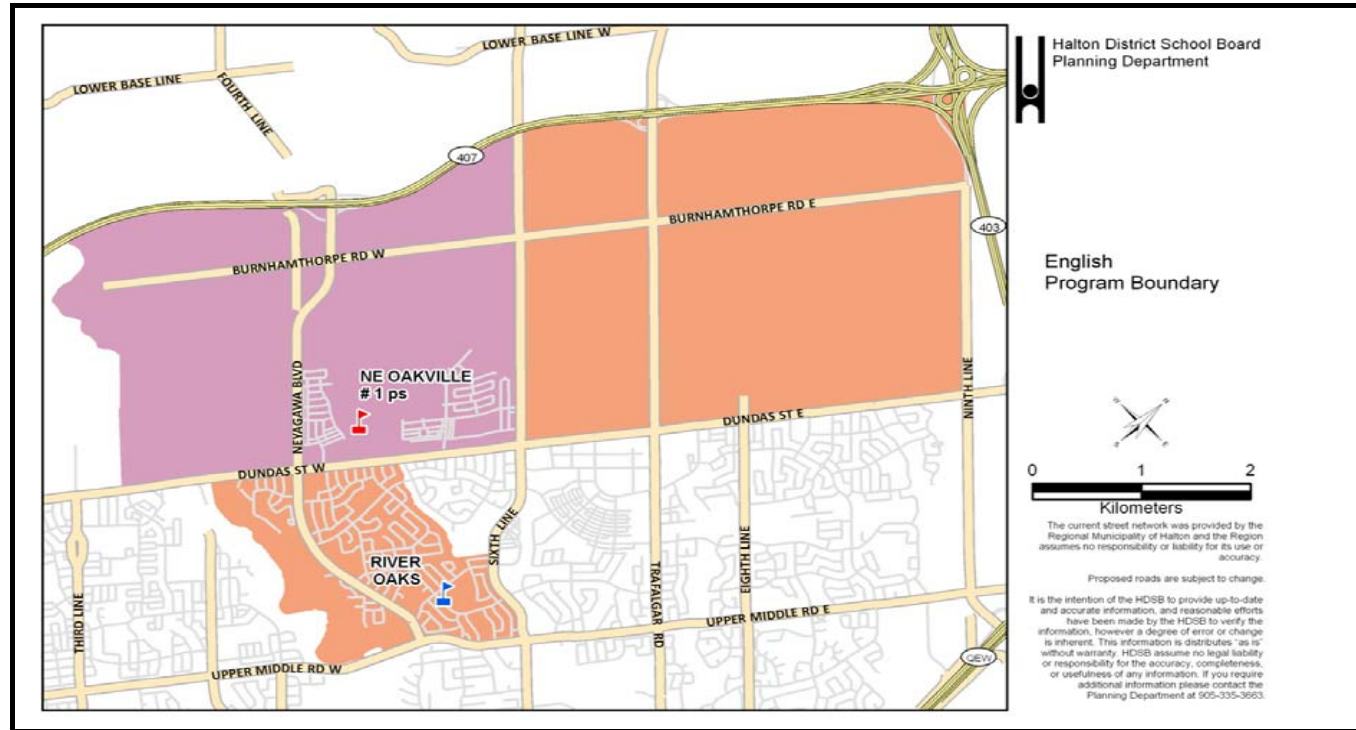
English boundary JK-8 is:

- East: Ninth Line
- West: 16 Mile Creek
- North: Highway 407
- South: Dundas Street West

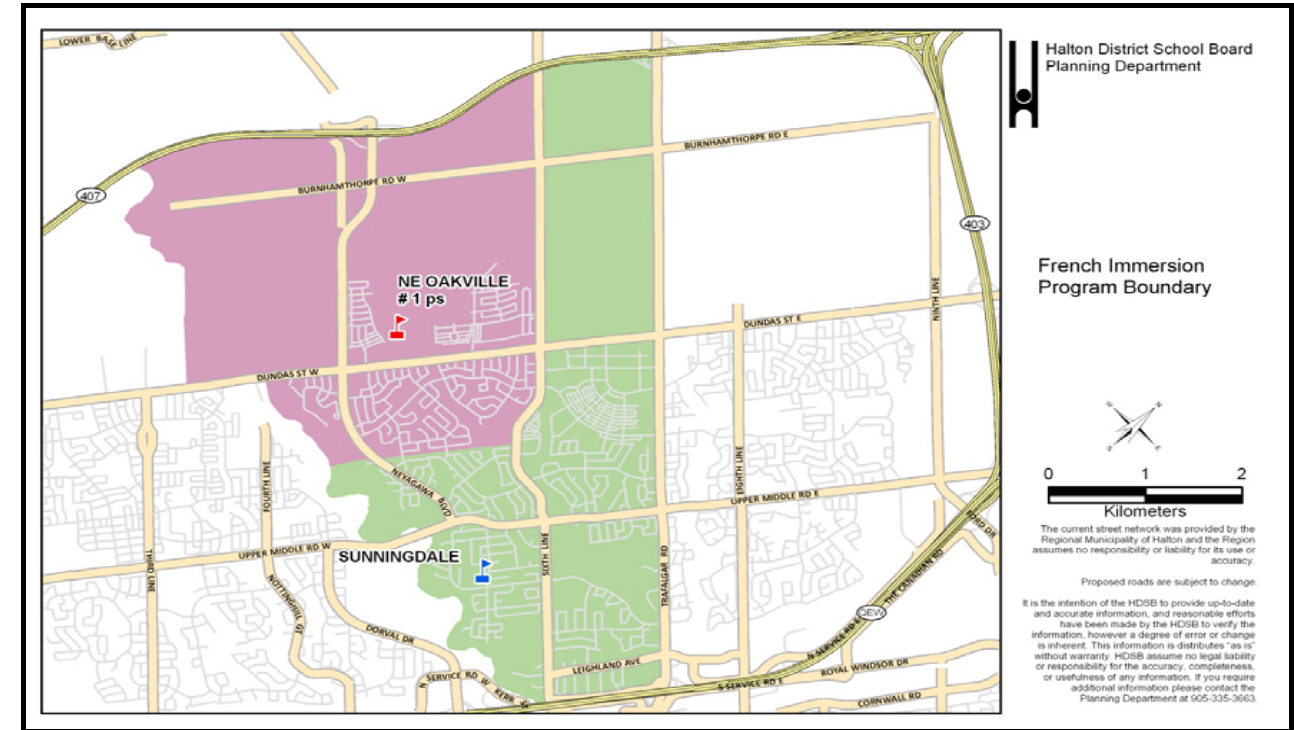
French Immersion boundary 1-8 is:

- East: Trafalgar Road
- West: 16 Mile Creek
- North: Highway 407
- South: Dundas Street West

Scenario 12



Scenario 12



	Program	OTG	Port	Total	2014	2015	2016	2017	2018	2019	2020	2021	2022	2023	2024
River Oaks PS	ENG				731	482	482	536	622	772	944	1100	1268	1440	1619
	FI	636	12	912	0	0	0	0	0	0	0	0	0	0	0
	Total				731	482	482	536	622	772	944	1100	1268	1440	1619
	River Oaks Utilization				-95	154	154	100	14	-136	-308	-464	-632	-804	-983
Percent Utilization				115%	76%	76%	84%	98%	121%	148%	173%	199%	226%	255%	
Sunningdale PS	ENG				0	0	0	0	0	0	0	0	0	0	0
	FI	613	10	843	813	691	686	682	662	637	603	606	608	616	619
	Total				813	691	686	682	662	637	603	606	608	616	619
	Sunningdale Utilization				-200	-78	-73	-69	-49	-24	10	7	5	-3	-6
Percent Utilization				133%	113%	112%	111%	108%	104%	98%	99%	99%	100%	101%	
N of Dundas (between Neyagawa & Sixth Line)	ENG				-	379	502	533	579	604	675	794	868	932	1003
	FI	-	-	-	-	94	137	177	216	255	299	326	341	348	354
	Sub-Total				0	473	639	710	795	859	974	1120	1209	1280	1357
N of Dundas (between Sixth Line & Trafalgar)	ENG				-	0	0	0	0	0	0	0	0	0	0
	FI	-	-	-	-	0	0	0	0	0	0	0	0	0	0
	Sub-Total				0	0	0	0	0	0	0	0	0	0	0
N of Dundas (east of Trafalgar)	ENG				-	0	0	0	0	0	0	0	0	0	0
	FI	-	-	-	-	0	0	0	0	0	0	0	0	0	0
	Sub-Total				0	0	0	0	0	0	0	0	0	0	0
N of Dundas (west of Neyagawa)	ENG				-	0	0	0	0	0	0	0	0	0	0
	FI	-	-	-	-	0	0	0	0	0	0	0	0	0	0
	Sub-Total				0	0	0	0	0	0	0	0	0	0	0
S of Dundas (down to the Crosstown Trail between 16 Mile Creek & Sixth Line)	ENG				-	0	0	0	0	0	0	0	0	0	0
	FI	-	-	-	-	92	120	148	176	204	232	224	224	224	224
	Sub-Total				0	92	120	148	176	204	232	224	224	224	224
NE Oakville #1 ps	ENG				-	379	502	533	579	604	675	794	868	932	1003
	FI	776	12	1052	-	186	257	325	392	459	531	550	565	572	578
	Total				0	565	759	858	971	1063	1206	1344	1433	1504	1581
	NE Oakville #1 Utilization				0	211	17	-82	-195	-287	-430	-568	-657	-728	-805
Percent Utilization				0%	73%	98%	111%	125%	137%	155%	173%	185%	194%	204%	
Study Total		2025	34	2807	1544	1738	1927	2076	2255	2472	2753	3050	3309	3560	3819

River Oaks PS is a JK-8 ENG school
 English boundary JK-8 includes area north of Dundas Street West:

- East: Ninth Line
- West: Sixth Line
- North: Highway 407
- South: Dundas Street West

Sunningdale PS is a 1-8 FI school
 French Immersion boundary 1-8 includes area north of Dundas Street West:

- East: Trafalgar Road
- West: Sixth Line
- North: Highway 407
- South: Dundas Street West

NE Oakville #1 ps opens September 2015 as a JK-7 ENG and 1-3 FI school; grade 8 ENG and grade 4 FI will be added September 2016; grade 5 FI will be added September 2017; grade 6 FI will be added September 2018; grade 7 FI will be added September 2019; grade 8 FI will be added September 2020
 English boundary JK-8 and French Immersion boundary 1-8 is:

- East: Sixth Line
- West: 16 Mile Creek
- North: Highway 407
- South: Dundas Street West

French Immersion boundary 1-8 also includes an area south of Dundas Street West:

- East: Sixth Line
- West: 16 Mile Creek
- North: Dundas Street West
- South: Crosstown Trail (pipeline)