

# Current School Boundaries: Status Quo Option



## English Program Boundary

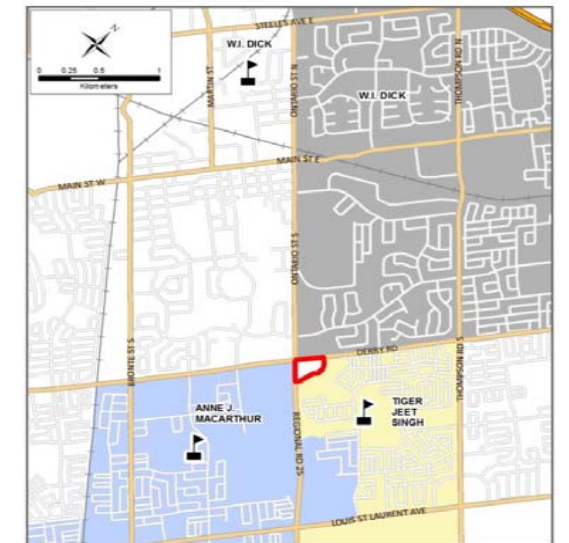
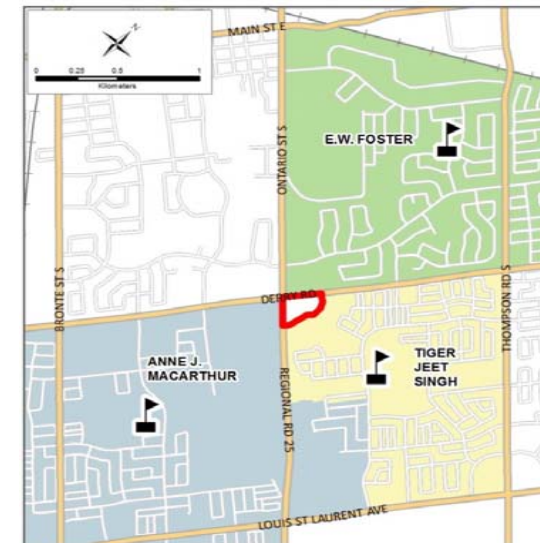
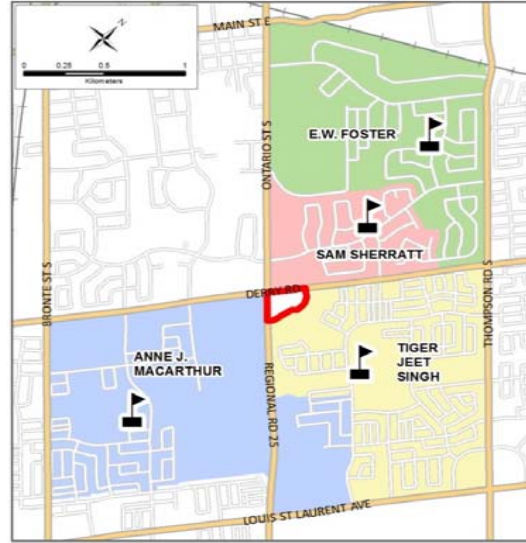
## French Immersion Program Boundary

### Grades JK-5

### Grades 6-8

### Grades 2-5

### Grades 6-8



It is the intention of the HDSB to provide up-to-date and accurate information, and reasonable efforts have been made by the HDSB to verify the information, however a degree of error or change is inherent. This information is distributed "as is" without warranty. HDSB assume no legal liability or responsibility for the accuracy, completeness, or usefulness of any information. If you require additional information please contact the Planning Department at 905-335-3663.

The current street network was provided by the Regional Municipality of Halton and the Region assumes no responsibility or liability for its use or accuracy.

School	Program	School Cap.	Max. Port	Total Cap	2019	2020	2021	2022	2023	2024	2025	2026	2027	2028	2029
Anne J. MacArthur PS (K-8 ENG, 2-8 FI)	ENG	793	18	1207	621	624	593	571	559	562	560	557	565	562	562
	FI				358	376	378	371	349	303	305	308	310	308	307
	SC-SPED				5	5	5	5	5	5	5	5	5	5	5
	<b>Total</b>	<b>984</b>	<b>1005</b>	<b>976</b>	<b>947</b>	<b>913</b>	<b>870</b>	<b>870</b>	<b>870</b>	<b>880</b>	<b>875</b>	<b>874</b>			
	<b>Shortage of Pupil Places</b>					-191	-212	-183	-154	-120	-77	-77	-77	-87	-82
<b>Percent Utilization</b>					124%	127%	123%	119%	115%	110%	110%	110%	111%	110%	110%
E.W. Foster PS (K-5 ENG, 2-6 FI)	ENG	328	12	604	144	155	137	129	138	147	151	147	157	169	179
	FI				165	163	156	165	168	163	160	160	161	166	168
	<b>Total</b>				<b>309</b>	<b>318</b>	<b>293</b>	<b>294</b>	<b>306</b>	<b>310</b>	<b>311</b>	<b>307</b>	<b>318</b>	<b>335</b>	<b>347</b>
	<b>Available/Shortage of Pupil Places</b>					19	10	35	34	22	18	17	21	10	-7
<b>Percent Utilization</b>					94%	97%	89%	90%	93%	95%	95%	94%	97%	102%	106%
Sam Sherratt PS (K-8)	ENG	415	10	645	260	271	298	319	328	328	327	342	356	359	360
	SC-SPED				143	129	129	117	117	126	123	123	124	123	122
	<b>Total</b>				<b>403</b>	<b>400</b>	<b>427</b>	<b>436</b>	<b>445</b>	<b>454</b>	<b>450</b>	<b>465</b>	<b>480</b>	<b>482</b>	<b>482</b>
	<b>Available/Shortage of Pupil Places</b>					12	15	-12	-21	-30	-39	-35	-50	-65	-67
<b>Percent Utilization</b>					97%	96%	103%	105%	107%	109%	108%	112%	116%	116%	116%
Tiger Jeet Singh PS (K-8 ENG, 2-8 FI)	ENG	896	12	1172	853	843	824	797	788	790	772	760	749	752	743
	FI				260	254	225	210	189	172	160	159	156	157	157
	SC-SPED				8	8	8	8	8	8	8	8	8	8	8
	<b>Total</b>	<b>1121</b>	<b>1105</b>	<b>1057</b>	<b>1015</b>	<b>985</b>	<b>970</b>	<b>940</b>	<b>927</b>	<b>913</b>	<b>917</b>	<b>908</b>			
<b>Shortage of Pupil Places</b>					-225	-209	-161	-119	-89	-74	-44	-31	-17	-21	-12
<b>Percent Utilization</b>					125%	123%	118%	113%	110%	108%	105%	103%	102%	102%	101%
W.I. Dick PS (6-8, ENG, FI)	ENG	412	3	481	169	184	192	189	186	200	253	290	320	313	324
	FI				235	221	222	188	172	156	165	175	181	177	174
	<b>Total</b>				<b>404</b>	<b>405</b>	<b>414</b>	<b>377</b>	<b>358</b>	<b>356</b>	<b>418</b>	<b>465</b>	<b>501</b>	<b>490</b>	<b>498</b>
	<b>Available/Shortage of Pupil Places</b>					8	7	-2	35	54	56	-6	-53	-89	-78
<b>Percent Utilization</b>					98%	98%	100%	92%	87%	86%	101%	113%	122%	119%	121%
To Be Determined (K-8 students)	ENG	-	-	-	0	0	0	0	3	8	11	24	25	28	29
	FI	-	-	-	0	0	0	0	0	1	1	3	3	3	3
	<b>Total</b>	<b>0</b>	<b>0</b>	<b>0</b>	<b>0</b>	<b>0</b>	<b>0</b>	<b>3</b>	<b>9</b>	<b>12</b>	<b>27</b>	<b>28</b>	<b>31</b>	<b>32</b>	
	<b>Study Total</b>					<b>2432</b>	<b>2432</b>	<b>2432</b>	<b>2432</b>	<b>2432</b>	<b>2432</b>	<b>2432</b>	<b>2432</b>	<b>2432</b>	<b>2432</b>

### Current / Status Quo Option

#### Definitions:

**School Cap.** The maximum number of pupil places in the school building also referred to as OTG or On The Ground capacity. Available / Shortage of pupil places and percentage utilization is a factor of the school capacity.

**Max. Port.:** The maximum number of portables allowed on a school site. (This may differ from the current number of portables on site)

**Total. Cap.:** The total of the school capacity and the capacity of students that can be held in portables. (School Cap. + Max Port\*23 = Total Cap.)

**SC-SPED:** Self Contained Special Education programs that require designated classrooms.

#### Notes:

**The To Be Determined area (TBD)** was designated as a result of the Viola Desmond PS Boundary Review.

New Development projections designated 85% of students to attend the English program and 15% of students to the FI program.

A high school boundary review is planned for the 2019/2020 school year.

**Anne J. MacArthur PS (K-8):** Except for 2017, enrolments have been above 900 students since 2014. Enrolments are expected to remain above 900 students until 2023 and above 800 until 2029. There is one SPED (Learning Disability) program. Seventeen developments impact the FI program, of those developments three impact grades 2-8FI, the other 14 developments have a diminishing impact as Viola Desmond PS FI program grows. There is a shortage of 191 pupil places. Nine portables on-site. Portables are required for the next 10 years.

**E.W. Foster PS (K-5 ENG, 2-5 FI):** 2018 was the first year, in ten years that enrolments were lower than school capacity. Enrolments are projected to increase after 2021. One development impacts the English and FI programs, after 2025. Two additional developments impact only the FI program. There are 19 available pupil places. One portable is on-site. It is projected portables will be required after 2027.

*Senior Elementary school: Sam Sherratt PS (English) and W.I. Dick PS (FI)*

**Sam Sherratt PS (K-8 ENG, 1-8 Gifted):** 2019 was the first year enrolments were lower than school capacity. Enrolments are projected to increase after 2020. There are three SPED (Gifted, Life Skills, Learning Disability) programs on site. One development impacts grades K-8 English program, a second development impacts grades 6-8. There are 12 available pupil places. Five portables are on site. It is projected portables will be required after 2020.

**Tiger Jeet Singh PS (K-8 ENG, 2-8 FI):** Since 2014, enrollments have remained above 1000 students. Enrolments are projected to remain above 1000 students until 2022 and above 900 students until 2029. There is one SPED (Learning Disability) program. Development does not impact this school. There is a shortage of 225 pupil places. Eleven portables on site. Portables are expected to be required for the next ten years.

**W.I. Dick PS (6-8):** Except for 2014 and 2015, enrolments have been above 400 students in the last ten years. Enrolments are projected to increase above 400 again after 2024. Thirteen developments impact this school in grades 6 to 8. There are eight available pupil places. Three portables are on-site as portable cannot be added or removed from this school.

**TBD area:** Is the CONNECTT development (24T-17001) at 6791 Regional Road 25, Milton. It is on the southeast corner of Derry Road and Regional Road 25. The Proposed Design – Master Plan lists 633 units: three condo buildings (high-density) and 60 townhouses (medium-density). Occupation is anticipated in 2023.

*High School: Craig Kielburger SS*