



Halton
District
School
Board

Florence Meares FI Cohort Alignment Study

BRSC meeting January 18, 2022





Honouring Land & Territory



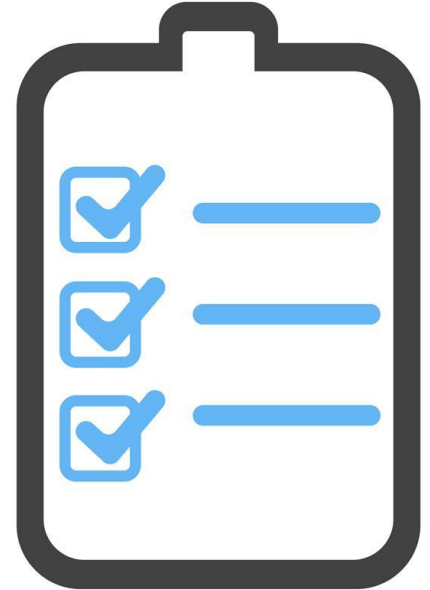
Halton as we know it today is rich in history and modern traditions of many First Nations and the Métis. From the Anishinaabe to the Attawandaron, the Haudenosaunee, and the Métis - these lands surrounding the Great Lakes are steeped in Indigenous history.

As we gather today on these treaty lands we have the responsibility to honour and respect the four directions, land, waters, plants, animals, ancestors that walked before us, and all the wonderful elements of creation that exist.

We would like to acknowledge and thank the Mississaugas of the Credit First Nation for sharing their traditional territory with us.

Agenda [\(link\)](#)

1. Timeline
2. Meeting #1: Discussion Summary
3. Study Area Review
4. FI Students in Study Area
5. Boundary Review Criteria
6. Draft Resolution
7. Next Steps



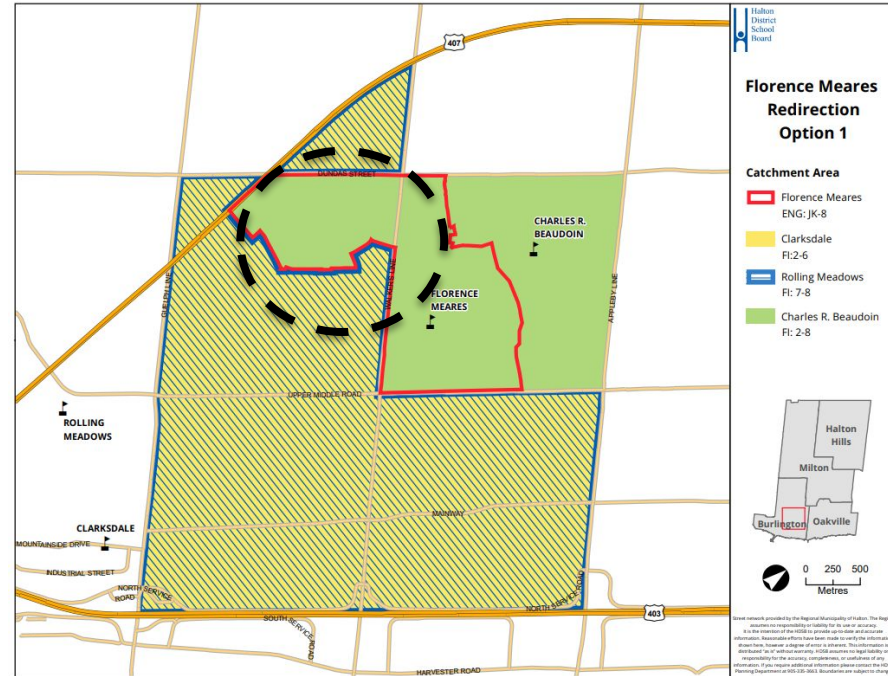
Timeline

Upcoming Milestones	Date
2020 LTAP Boundary Review Board Approval	November 3, 2021
Boundary Review Steering Committee Meeting #1	January 12, 2022
Boundary Review Steering Committee Meeting #2	January 18, 2022
Administrative Council	January 24, 2022
Notification of recommended boundary to affected community	January 25, 2022
Board Meeting: Florence Meares FI Redirection (Information)	February 2, 2022
Board Meeting: Florence Meares FI Redirection (Action)	February 16, 2022
Notification of Decision to affected communities	February 17, 2022

Meeting #1: Discussion Summary

Discussion Points:

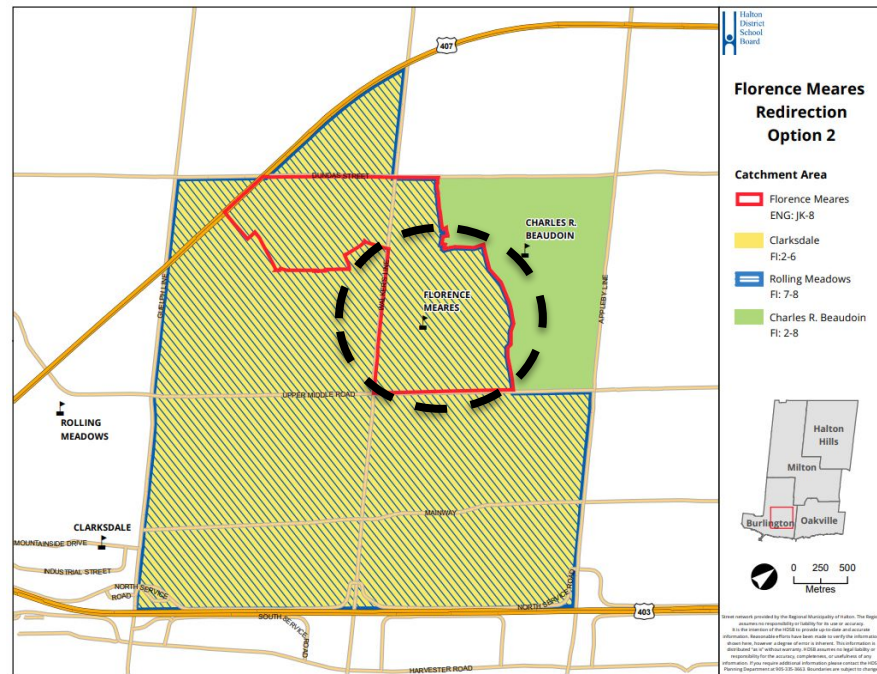
1. Confirmed Pathway 2
 - Minimum impacts to students
 - Only 1 viable option
 - Community prefers to attend Charles R. Beaudoin PS
2. Confirmed Option 1 is preferred
 - Minimizes impact to schools utilization
 - Maximizes student experience
 - Minimizes transportation



Meeting #1: Discussion Summary

Discussion Points:

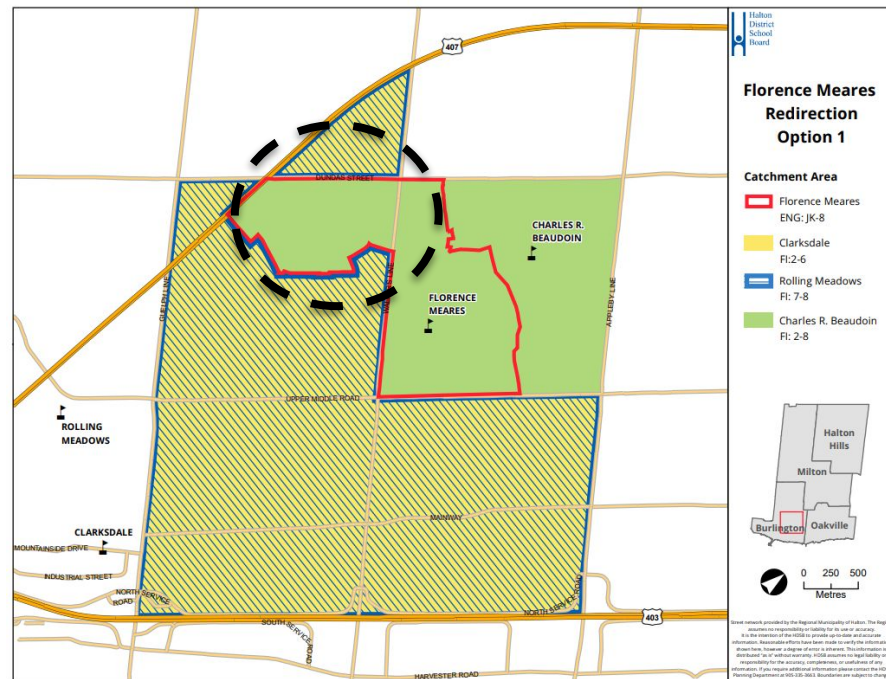
3. Confirmed Option 2 is *not viable*:
 - The initial change was a result of overutilization in the area, and was not preferred by the community.
 - Less students likely to elect FI
 - Negative Impacts Florence Meares PS and Charles R. Beaudoin PS utilization.



Meeting #1: Discussion Summary

Discussion Points:

4. Keeping Families together - Option for siblings
 - Grandparenting (includes transportation)
 - Preference expressed to grant older siblings to Charles R. Beaudoin PS with transportation - Students from grades 2-8 should be considered.
 - Decision needs to be made for September 2022 for grandparenting. There will not be additional options to switch schools afterwards.

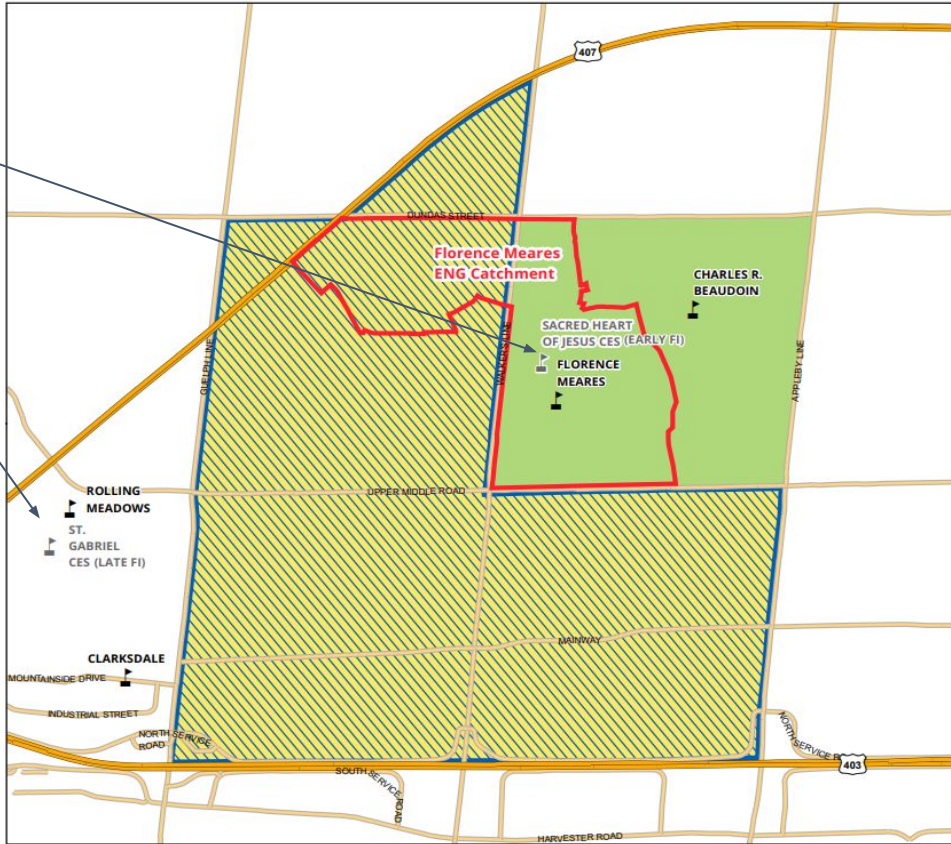


Study Area: FI Schools

French Immersion (HCDSB)
Grade 1-8
Burlington Wide

Extended French (HCDSB)
Grade 5-8
Burlington Wide

NOTE:
Florence Meares PS is more proximate to the community in North Headon Forest, than its current location at Clarksdale PS, as well as the co-terminous french program at the HCDSB.



Florence Meares Redirection Overview

Catchment Area

- Florence Meares
ENG: JK-8
- Charles R. Beaudoin
FI: 2-8
- Rolling Meadows
FI: 7-8
- Clarksdale
FI: 2-6



Street network provided by the Regional Municipality of Halton. The Region assumes no responsibility or liability for its use or accuracy. In the absence of the HCDSB to provide up-to-date and accurate information. Reasonable efforts have been made to verify the information shown here, however a degree of error is inherent. This information is distributed "as is" without warranty. HCDSB assumes no legal liability or responsibility for the accuracy, completeness, or usefulness of any information. If you require additional information please contact the HCDSB Planning Department at 905-335-3663. Boundaries are subject to change.

North Headon Forest FI Students

Slide not available

Criteria to Evaluate Options

Assessment of Option 1 alignment with Boundary Review Criteria

<p>Viability of Programs: <i>Can programs be successfully maintained at the school?</i></p>	<p>All program remain viable at Clarksdale PS/ Rolling Meadows PS and Charles R. Beaudoin PS.</p>
<p>Stable Long Term Boundaries: <i>Is there long term stability and avoid a another boundary change in the short term?</i></p>	<p>No future boundary reviews are required to accommodate future pressures</p>
<p>Portable and Portapaks: <i>Is the use of portable classroom minimized?</i></p>	<p>Not required</p>
<p>Fiscal Responsibility: <i>Does this option avoid unnecessary costs?</i></p>	<p>Provides for greater efficiencies in more proximate locations for students. No additional costs.</p>

Criteria to Evaluate Options

Assessment of Option 1 alignment with Boundary Review Criteria

<p>Proximity to schools: <i>Are safe walk-to opportunities maximized?</i></p>	<p>Students that can currently walk to school will remain walking to school</p>
<p>Balance of Enrolments: <i>Is access to programs, resources, extra curricular opportunities being maximized? Can over/under utilization be avoided?</i></p>	<p>Yes, option 1 balances enrolment to ensure sustainable long-term utilization.</p>
<p>Transportation: <i>Is this option cost effective for transportation?</i></p>	<p>Yes, affected area is already transported. Now enhanced by aligning the FI and ENG transported cohorts together.</p>
<p>Student Experience: <i>Does this option reduce the number of moves? Are cohorts kept together?</i></p>	<p>Yes, students would not have to transfer schools from grade 6 to grade 7. Cohorts remain together. Families will be together.</p>

Draft Resolution

DRAFT RECOMMENDATION:

*BE IT RESOLVED THAT, the Halton District School Board adjust the boundaries for the Charles R. Beaudoin Public School French Immersion program as outlined in Option 1, as detailed in Report **22XXX**, effective September 2022.*

THAT, the Halton District Schools Board permit the older siblings of students currently attending JK to Grade 1 at Florence Meares PS, to be redirected from Clarksdale PS and/or Rolling Meadows PS, to Charles R. Beaudoin PS, with transportation for the September 2022 school year until graduation.



Next Steps

Upcoming Milestones	Date
2020 LTAP Boundary Review Board Approval	November 3, 2021
Boundary Review Steering Committee Meeting #1	January 12, 2022
Boundary Review Steering Committee Meeting #2	January 18, 2022
Administrative Council	January 24, 2022
<u>Notification of recommended boundary to affected community</u>	January 25, 2022
Board Meeting: Florence Meares FI Redirection (Information)	February 2, 2022
Board Meeting: Florence Meares FI Redirection (Action)	February 16, 2022
Notification of Decision to affected communities	February 17, 2022

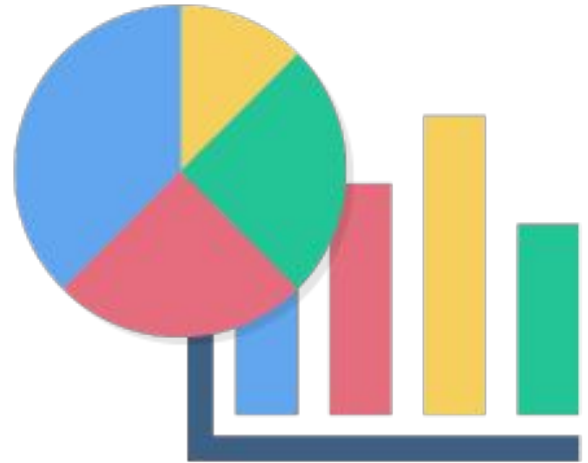
Questions/Feedback?

APPENDICES

Options - Worksheets

Additional Resources:

1. Option maps and tables can be found in more detail in the boundary review [Google Shared Drives](#)
2. Link to worksheets can be found [here](#)
3. Extra items that can be found in the Google Drive:
 - a. list of [development applications](#) received and included in the projections
 - b. Historic Florence Meares [progression rules](#) fo FI
 - c. [Report 12011](#) - Alton Village Boundary Review
 - d. Current English and FI catchment maps.
 - e. [Walking Map](#) to Charles R Beaudoin PS



Option 1 - Projections

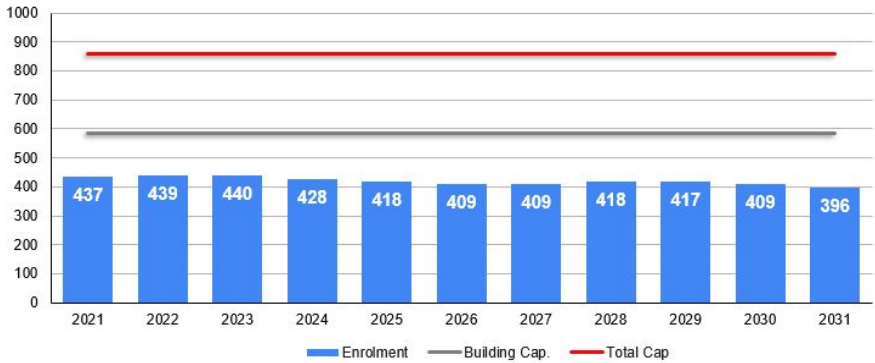
Charles R. Beaudoin PS - Option 1



Clarksdale PS - Option 1



Rolling Meadows PS - Option 1



Option 1 Summary:

Students who reside in Florence Meares PS catchment will attend FI at:

- Charles R. Beaudoin PS (2-8)
- M.M. Robinson HS (9-12)

effective September 2022.

Options - Summary

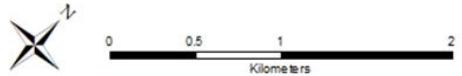
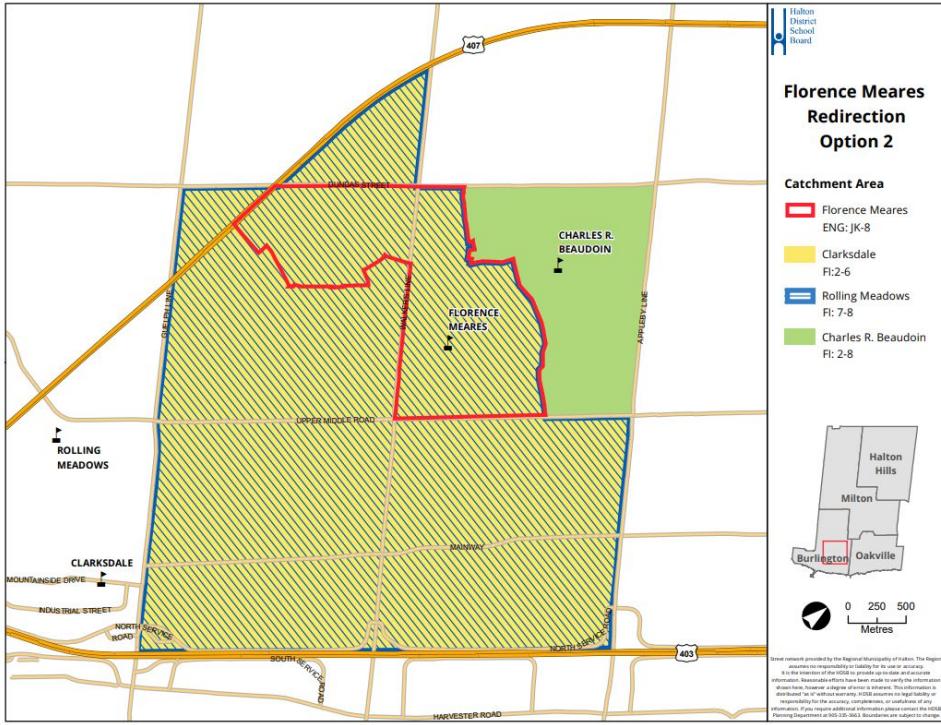
Criteria	Status Quo	Option 1	Option 2
Proximity to school	North Headon Forest students require transportation. Some students residing east of Walker's Line are within walking distance to the FI school.	North Headon Forest students require transportation. Some students residing east of Walker's Line are within walking distance to the FI school.	All students require transportation to the FI schools.
Stable, long-term boundaries	Yes - all school are under OTG capacity.	Yes - all school are under OTG capacity.	Yes - all school are under OTG capacity.
Transportation	North Headon Forest is transported to FI schools.	North Headon Forest is transported to FI schools.	North Headon Forest is transported to FI schools. All Students residing east of Walker's Line will require transportation.
Student Experience	Students electing FI from Florence Meares attend two different schools: Clarksdale PS/Rolling Meadows PS, Charles R. Beaudoin PS. (split cohort)	Students electing FI from Florence Meares attend Charles R. Beaudoin PS. (unified cohort)	Students electing FI from Florence Meares attends Clarksdale PS / Rolling Meadows PS. (unified cohort)
Students Impacted	Student will continue to experience a split FI cohort.	Students electing to attend FI for grade 2 from North Headon Forest.	Students electing to attend FI for grade 2 from east of Walker's Line.

Option 2

Option 2 Summary:

1. English boundary status quo
2. FI Students east of Walker's Line are directed to Clarksdale PS (2-6), Rolling Meadows FI (grades 2-8).
3. Phased in starting with Grade 2 FI.
4. Effective September 2022.
5. Student are bussed that can walk to Charles R. Beaudoin PS

French Immersion Program Boundary

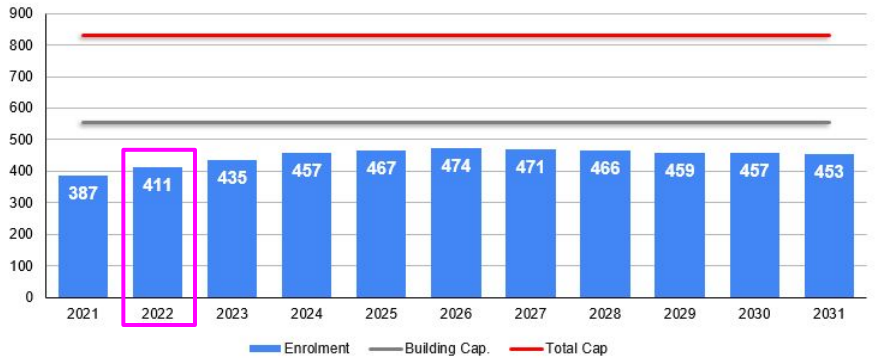


Option 2 - Projections

Charles R. Beaudoin PS - Option 2



Clarksdale PS - Option 2



Florence Meares PS - Option 2



Option 2 Summary:

Students who reside in Florence Meares PS catchment will attend FI at:

- Clarksdale PS (2-6),
- Rolling Meadows PS (7-8),
- M.M. Robinson HS (9-12)

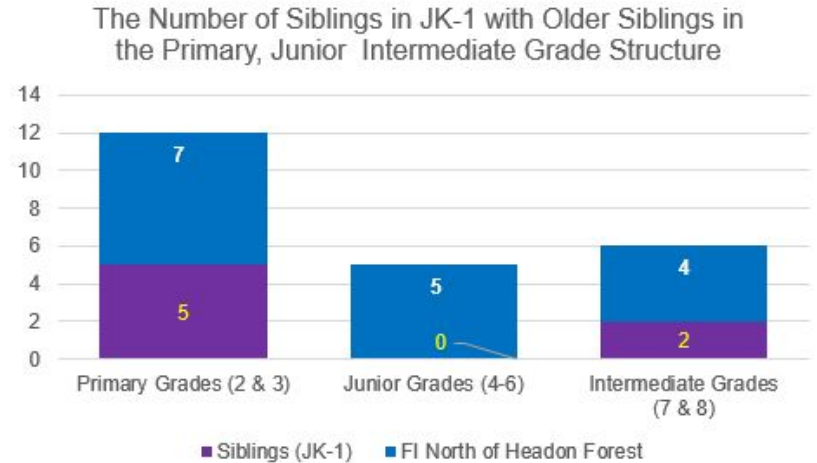
Effective September 2022.

Keeping Families Together

Options available to transition of older siblings to Charles R. Beaudoin PS options:

- September 2022 or
- The September the younger sibling enter FI
- Both?

New students moving in to North Headon Forest with a English sibling (JK-1 and FI sibling in grade 3-8?)



Communications

- [Letter](#) to parents to communicate the schools involved, pathway and preferred option.
- Website
- School Locator to be updated upon Trustee approval for the 2022 /2023 school year

Burlington French Immersion Cohort Alignment Boundary Review

[Home](#) / [Schools](#) / [School Boundary Reviews](#) / [Current Boundary Reviews](#) / [Burlington French Immersion Cohort Alignment Boundary Review](#) /

[A](#) [A](#) [A](#) | [🗨](#) | [📄](#) | [🔗](#) Share

School Boundary Reviews

Current Boundary Reviews

- [Burlington French Immersion Cohort Alignment Boundary Review](#)

- [Milton SW #11 & #12 ps Boundary Review](#)

- [Rural Milton/Oakville \(Cohort Alignment\) Boundary Review](#)

Past Boundary Reviews

[Adult, Alternative and Continuing Education](#)

[COVID-19](#)

[Distribution of Materials to Schools](#)

[Find My Local School](#)

[Information Technology in Schools](#)

About The Review

Students electing FI from Florence Meares PS are currently being directed to two (2) schools, namely Charles R. Beaudoin PS and Clarksdale PS. Planning Services is recommending a boundary review to be initiated with the scope of determining whether the status quo option is to be maintained or explore if all Grade 1 students electing FI can be directed to the same French Immersion school to avoid a split Grade 2 cohort.

The following schools are to be included in the study:

1. Florence Meares PS
2. Charles R. Beaudoin PS
3. Clarksdale PS

Be It Resolved That, the Halton District School Board direct staff to complete a boundary review for ERA 105, 106, and 107 with the objective of eliminating split cohorts for the French Immersion program;

Study Area Map

- NE Burlington Elementary Schools

Board Report

- [Boundary Review Initiation Report 21126](#)

Timeline

Boundary Review Initiation Approval	October 12, 2021
BRSC Meeting #1	Pathway 1 vs Pathway 2 Date: TBD