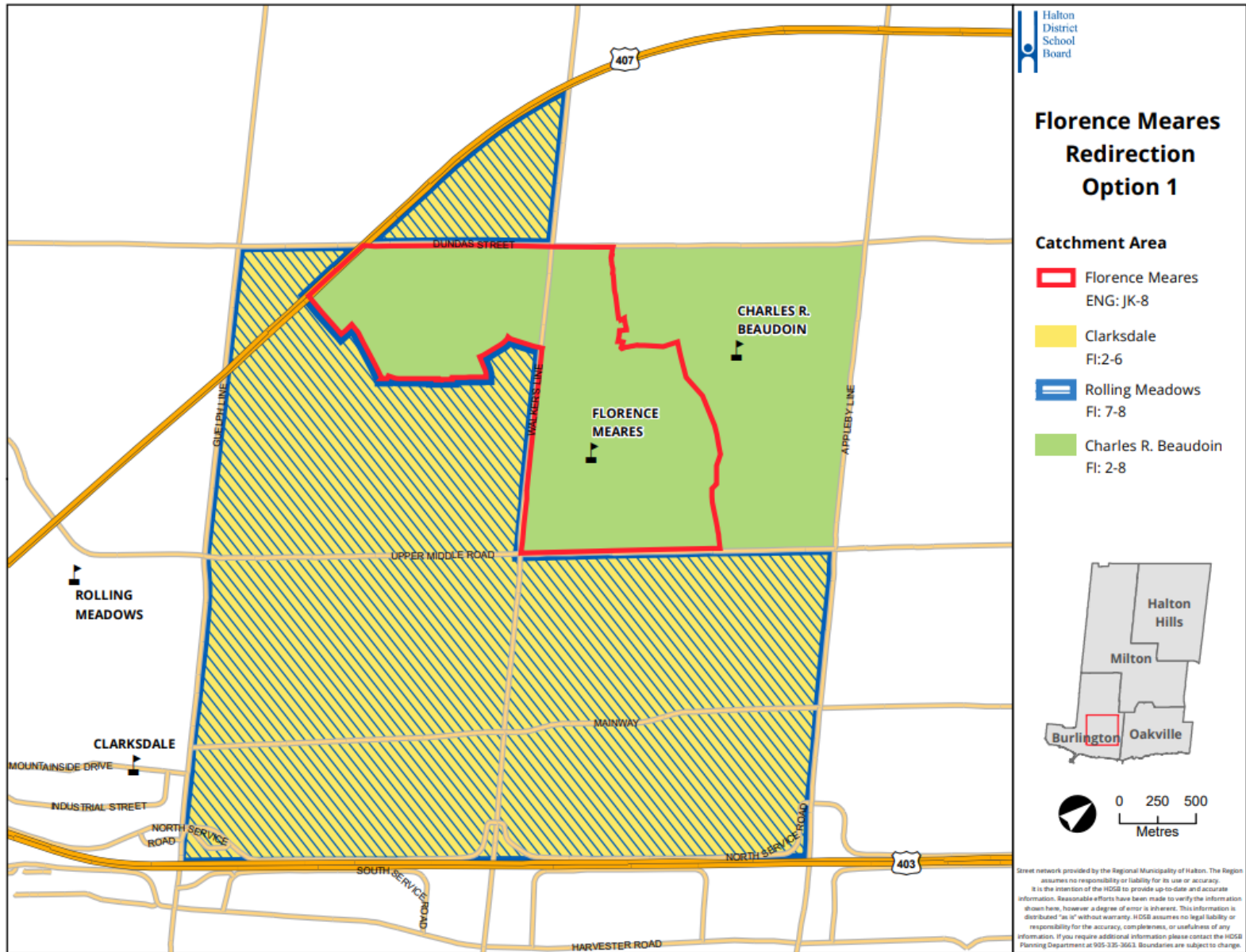


Option 1

Dec 22, 2021



Option 1

Dec 20, 2021

Students are directed to Charles R. Beaudoin PS for FI from Florence Meares

Scenario 1344

School	Building Cap. (OTG)	Portable	Total Capacity	Program	2021	2022	2023	2024	2025	2026	2027	2028	2029	2030	2031	Notes
Florence Meares PS	645	Maximum: 12	921	ENG	603	587	584	594	575	566	554	547	536	539	531	Status Quo
				FI	0	0	0	0	0	0	0	0	0	0	0	
		SC-SPED		13	13	13	13	13	13	13	13	13	13	13	13	
		Total		616	600	597	607	588	579	567	560	549	552	544		
	<i>Percent Utilization</i>				96%	93%	93%	94%	91%	90%	88%	87%	85%	86%	84%	
	<i>Shortage of Pupil Places</i>				29	45	48	38	57	66	78	85	96	93	101	
<i>Estimate number of portables</i>				-1	-2	-2	-2	-2	-3	-3	-4	-4	-4	-4		
Charles R. Beaudoin PS	722	Maximum: 4	814	ENG	248	237	215	204	197	210	217	221	223	224	224	ENG program status quo. FI students in the Florence Meares PS catchment are directed to Charles R. Beaudoin PS. (west of Walker's Line)
				FI	248	241	225	225	225	228	219	220	220	221	219	
		SC-SPED		108	109	111	111	117	111	110	108	107	106	106		
		Total		604	587	551	540	538	549	546	550	551	552	550		
	<i>Percent Utilization</i>				84%	81%	76%	75%	75%	76%	76%	76%	76%	76%	76%	
	<i>Shortage of Pupil Places</i>				118	135	171	182	184	173	176	172	171	170	172	
<i>Estimate number of portables</i>				-5	-6	-7	-8	-8	-8	-8	-7	-7	-7	-7		
Clarksdale PS	553	Maximum: 12	829	ENG	214	233	246	257	266	268	263	260	259	258	256	ENG program status quo. FI students in the Florence Meares PS catchment are redirected to Charles R. Beaudoin PS.
				FI	168	167	173	180	176	175	178	175	170	169	169	
		SC-SPED		5	5	5	5	5	5	5	5	5	5	5		
		Total		387	405	424	442	447	448	445	440	435	433	429		
	<i>Percent Utilization</i>				70%	73%	77%	80%	81%	81%	81%	80%	79%	78%	78%	
	<i>Shortage of Pupil Places</i>				166	148	129	111	106	105	108	113	118	120	124	
<i>Estimate number of portables</i>				-7	-6	-6	-5	-5	-5	-5	-5	-5	-5	-5		
Rolling Meadows PS	584	Maximum: 12	860	ENG	330	330	335	337	325	316	318	322	319	314	304	ENG program status quo. FI students in the Florence Meares PS catchment are redirected to Charles R Beaudoin PS. (west of Walker's Line)
				FI	93	95	91	77	78	79	77	83	84	81	77	
		SC-SPED		14	14	14	14	14	14	14	14	14	14	14	14	
		Total		437	439	440	428	418	409	409	418	417	409	396		
	<i>Percent Utilization</i>				75%	75%	75%	73%	71%	70%	70%	72%	71%	70%	68%	
	<i>Shortage of Pupil Places</i>				147	145	144	156	166	175	175	166	167	175	188	
<i>Estimate number of portables</i>				0	0	0	0	0	0	0	0	7	8	8		

What you need to know about the current status.

Enrolments are based on Oct 31, 2021 Trillium extract.

All development timing are a best estimates . Development may advance or be delayed.

Progression from Grade 1 ENG to grade 2FI:

Current:	ENG 75%	CRB FI 13%	Clark FI 4%	Other 8%
Option 1:	ENG 75%	CRB FI 17%	Clark FI 0%	Other 8%
Option 2:	ENG 75%	CRB FI 0%	Clark FI 17%	Other 8%