

Halton District School Board

Glenview-Maplehurst Boundary Review Committee

Tuesday, February 13, 2023, 7:00-9:00 pm

Boundary Review Committee:

Tim Rye, Christine Sawchuk, Elma Forto, Kendra Murphy

Staff Present:

Michelle D'Aguiar, Mitchell Gundy, Jacqueline Newton, Donna Danielli, Nick Frankovich,

Regrets:

Andrew Capern, Frederick Thibeault, Matthew Diodati

Meeting Notes:

Meeting starts at 7:05 pm

- Superintendent Newton welcomes everyone to the meeting.
- Superintendent Frankovich honors the land and territory.
- Superintendent Newton reviews the agenda for tonight's meeting.
 - Housekeeping
 - Review public meeting feedback.
 - Final review of options.
 - Group discussion
 - Next steps

Part 1

- Housekeeping
 - Discuss Public Meeting and Review Feedback
 - Identify Final Option(s) to present to the BRSC
 - Notes from the previous meeting are approved.
 - Feedback will be made available online in the days following the meeting.
- Themes that came out of the submitted livestream questions.
 - Questions Regarding the process including
 - The purpose of the review is to relieve enrolment pressure at Glenview PS.
 - Next steps
 - Reviewing feedback with BRC

- BRSC presenting a Preferred option to the Director and Senior Team
 - A Final option to be presented to the Board of Trustees for approval
- Delegation process
- Before and Aftercare availability for students being moved.
 - The YMCA is aware of the boundary change.
 - The YMCA will be sending a memo to Glenview before and aftercare school families to determine how many families are enrollment at Glenview PS will need care at Maplehurst PS
 - Additional space at Maplehurst PS may be required.
- Questions regarding student mental health and well-being, in context with the pandemic and virtual learning
 - As part of the School Boundary Review Administrative Procedure, an Integration Committee will plan for and implement the positive integration of students and staff affected by the boundary decision and relocation into their new school environment. The Family of Schools Superintendent of Education would act as the Chair of the Integration Committee.
 - Some details to consider to administer integration:
 - Team and community building activities
 - Grouping of students that moved from Glenview PS into the same class or have buddy requests
 - Teacher and school administrator involvement
- Questions regarding the ability to remain at Glenview PS if they are impacted by the new boundary.
 - The Board encourages students to attend their designated school but there is a process that can be followed.
 - Out of Area Transfer requests is the process where students can apply to attend a school other than the school designated for their area of residence.
 - One of the requirements that would allow a student to attend a school that is not their designated school is if there is enough space at the school to accommodate them
 - The purpose of this study is to alleviate accommodation pressures at Glenview PS so Out of Area Transfer requests will not be fulfilled by this school.
 - As for Maplehurst PS, this will be reviewed on a case by case basis subject to availability of space.
- Questions regarding who is eligible for legacy exemption if impacted by boundary changes
 - All the Options (1 to 13) presented to date have assumed the following:
 - September 2023 implementation of the new boundaries
 - Current Grade 5 English students will not be impacted, they will remain at their current school for Grade 6.

- Consideration may be given to extending the exemption to beyond current Grade 5 students.
- Timelines
 - Currently at BRC meeting #5
 - Report to Administrative Council
 - February 21, 2023
 - Report to Board for information.
 - March 1, 2023
 - Report to Board for Approval
 - March 22, 2023

Part 2

- Feedback from the online survey
 - 62 total responses
 - Opened on Thursday February 2, 2023 to Noon Thursday 9, 2023.
 - Please refer to the presentation for the maps and graphs regarding the data.
 - Common themes.
 - Distance to home school/walkability to the school.
 - Availability to allow students to bike to the school.
 - Impact of Covid-19 and Mental Health of students changing schools/being removed from established friendships.
 - Issues with the phasing of students.
 - Legacy exemptions.
 - Excluding current students from moving.
 - Excluding older/established neighbourhoods from being moved.
 - Concern over preferential treatment of Zone E.
 - Concerns over crossing Plains Road and other Major Roadways.
 - Concern over school congestion during entry and dismissal.
 - Minimize the number of portables on each site.
 - Lack of data available for the community to study and develop options.
- Final Review of Options
- Option 3 ([link](#))
 - Students south of Plains Rd to remain at Glenview PS.
 - Maximizes walking web, and the majority of existing Active Transportation behaviours. Zone E will now be walkable to Maplehurst PS.
 - Students north of Plains Rd and west of Waterdown Rd are to remain at Glenview PS
 - Maplehurst PS boundary extended west to Waterdown Rd
 - Future development in Aldershot Corners to attend Maplehurst PS
 - Minimal impact on transportation services
 - Glenview PS enrolments will remain above 105% utilization.
 - Maplehurst PS to enrolments to increase to above 80% utilization, in the first five years.

- Capacity at Maplehurst PS will be reached by 2029 (at 5 portables) and will be surpassed by 2030. A significant amount of the pressures are as a result of the Aldershot Corners submitted developments being directed entirely to one school (Maplehurst PS).
- Option 10 ([link](#))
 - Areas north of Hwy 403 to attend Maplehurst PS.
 - Maximizes walking web, and existing Active Transportation behaviours.
 - Areas north of Masonry and north of Plains Rd between Cooke Blvd and Waterdown Rd to attend Maplehurst PS
 - Zone Ea to attend Maplehurst PS. Zone Eb to attend Glenview PS. Divided zone E into parts that reflect the walking zone of 1.6km to Glenview. A portion of existing residents would be redirected.
 - Future development in Aldershot Corners to attend Maplehurst PS
 - Approximately 80 students to be redirected to Maplehurst PS.
 - Maplehurst PS enrolments will range between 85% to 115% capacity until 2029.
 - Glenview PS enrolments will range between 103% to 118% capacity.
 - Max. capacity at Maplehurst PS will be reached by 2030 (at 5 portables) and will be surpassed by 2031.
 - Glenview PS reaches max. capacity by 2029 (at 6 portables), but never surpasses its max. capacity. That said, between 2028 and 2032, Glenview PS's portable needs fluctuate between 5-6 portables, which may be surpassed
 - Development pressures are divided between both schools.
 - Pushes the need for accommodation planning initiatives to 2031, but there is a risk that portable max. is surpassed at Glenview PS over a greater period of time.
 - Glenview PS keeps a greater number of portables long-term.
- Option 11 ([link](#))
 - Area north of Plains Rd is redirected to Maplehurst PS, except Zone Eb.
 - Maximizes walking web, and existing Active Transportation behaviours.
 - Future development in Aldershot Corners to attend Glenview PS, Maplehurst PS
 - Phased transition to Maplehurst PS starting with students in grades K-5
 - Approximately 90 students are to be redirected to Maplehurst PS.
 - Glenview PS enrolments will range between 101% to 108% capacity.
 - Maplehurst PS enrolments will range between 88% to 114% capacity until 2030.
 - Max capacity at Maplehurst PS will be reached by 2029 (at 5 portables) and will be surpassed by 2030. May be able to squeeze a sixth portable by constructing 2 additional parking spaces.
 - Glenview PS fluctuates between 2-4 portables throughout the projection and has little risk of reaching or surpassing maximum capacity.
 - Development pressures are divided between both schools.

Part 3

- Breakout session (for more information on the discussion, refer to attached Jam Boards)
 - BRC takes time to talk about the options as BRSC takes notes on the Jamboard.
 - BRC supports Options 3 and 11. The BRC favours option 3 but option 11 is acceptable as well.
 - BRC can support, defend and justify both options.

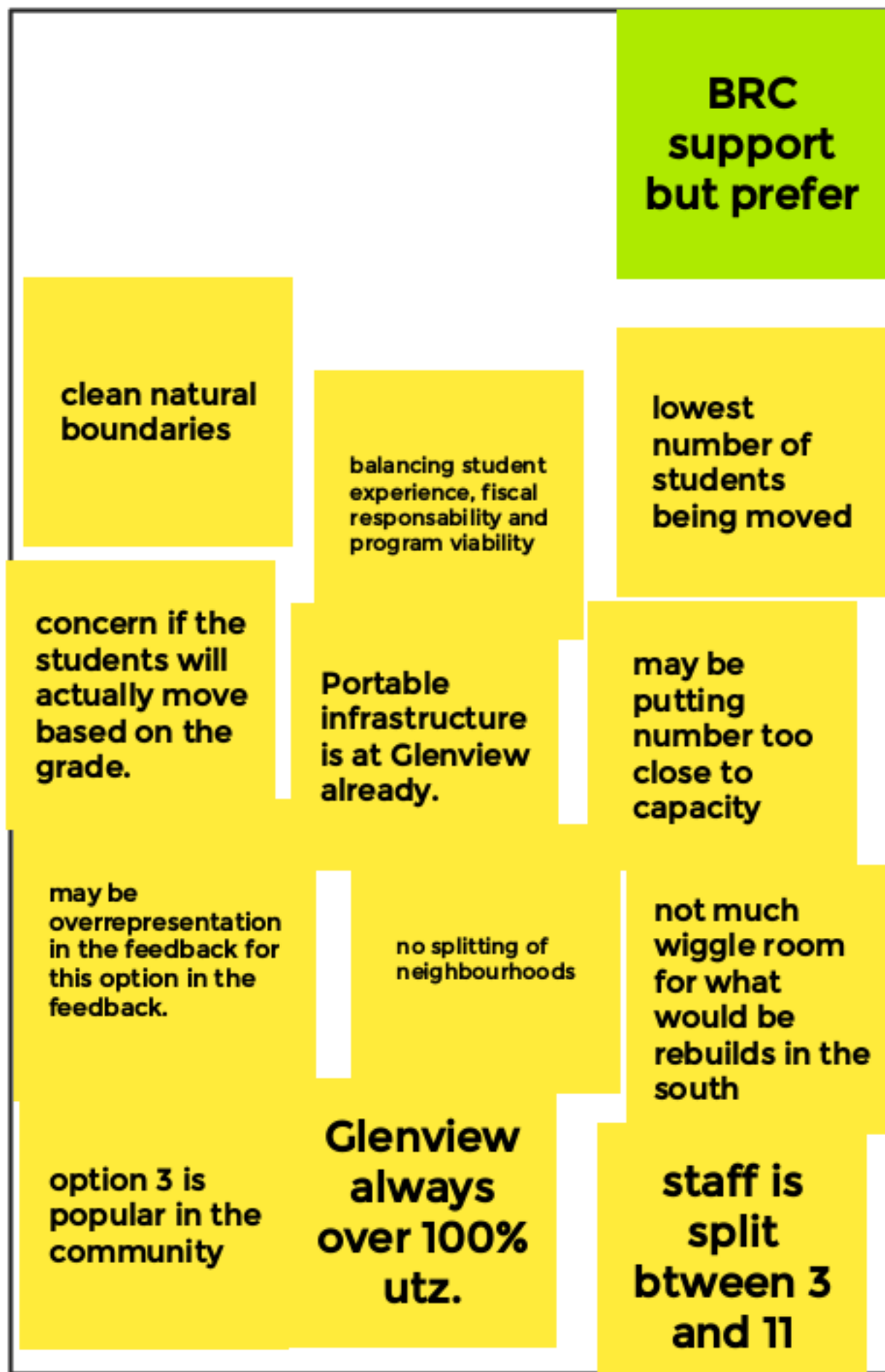
Part 4

- Notification of the recommendations will be sent out to the community the week of February 20, 2023 after the draft report is shared with Administrative Council.
- BRSC to recommend options to the Director of Education to present to the Board of Trustees for consideration and approval (after the meeting).
- March 1, 2023 - report presented for information
 - The BRC will be sent a copy of the report prior to the Board meeting.
- March 22, 2023 - for decision
- Opportunities for the community to delegate at each meeting.
- Any questions please contact us at Mapleglenreview@hdsb.ca
- Questions
 - Maplehurst Public School has started to plan integration events and procedures to welcome and make the transfer as easy as possible.
- Superintendent Newton thanks the BRC for their work
- Trustee Danielli thanks the BRC for their hard work.

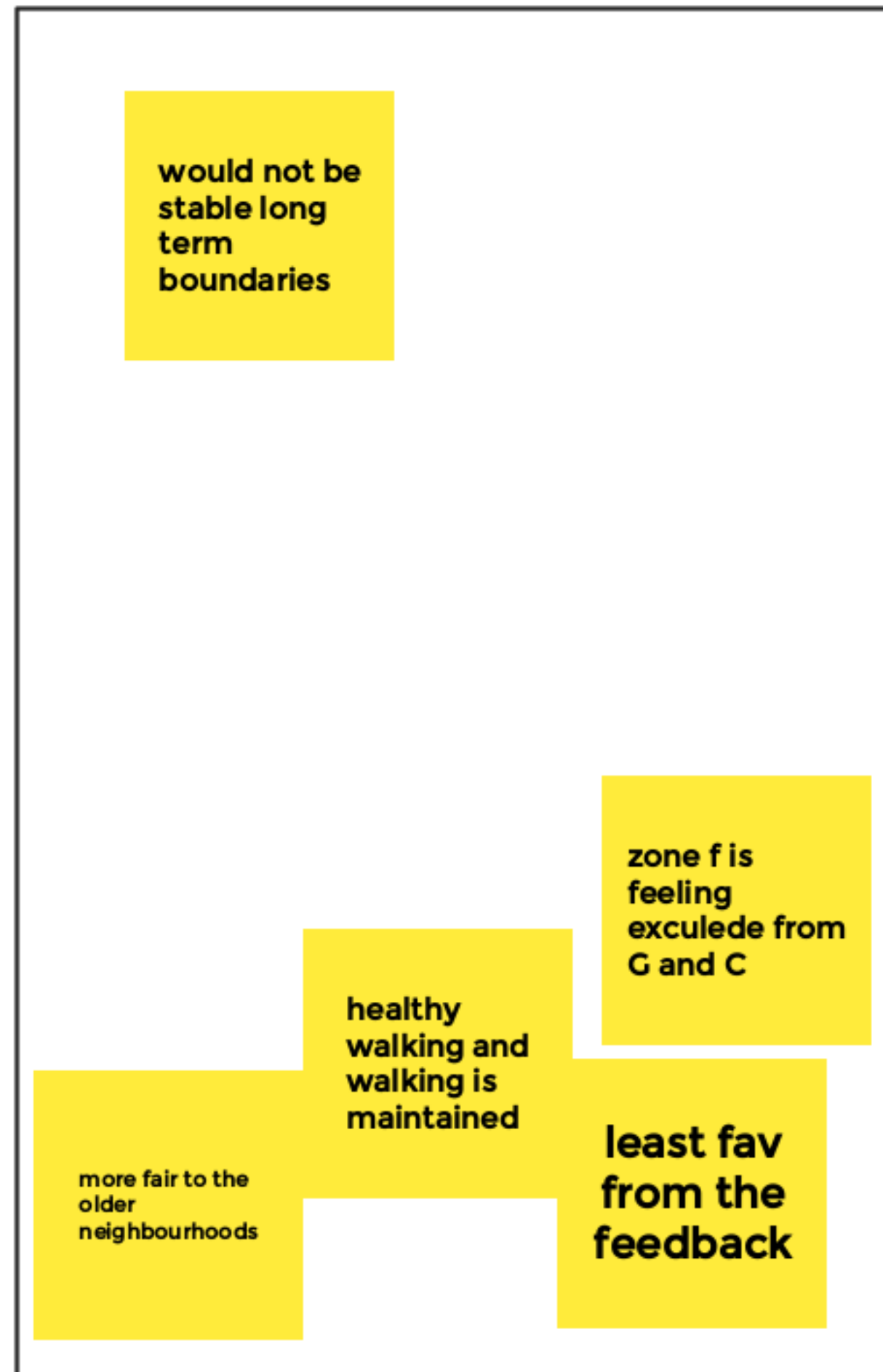
Meeting ends 8:08 pm

Group Discussion: Option Shortlist

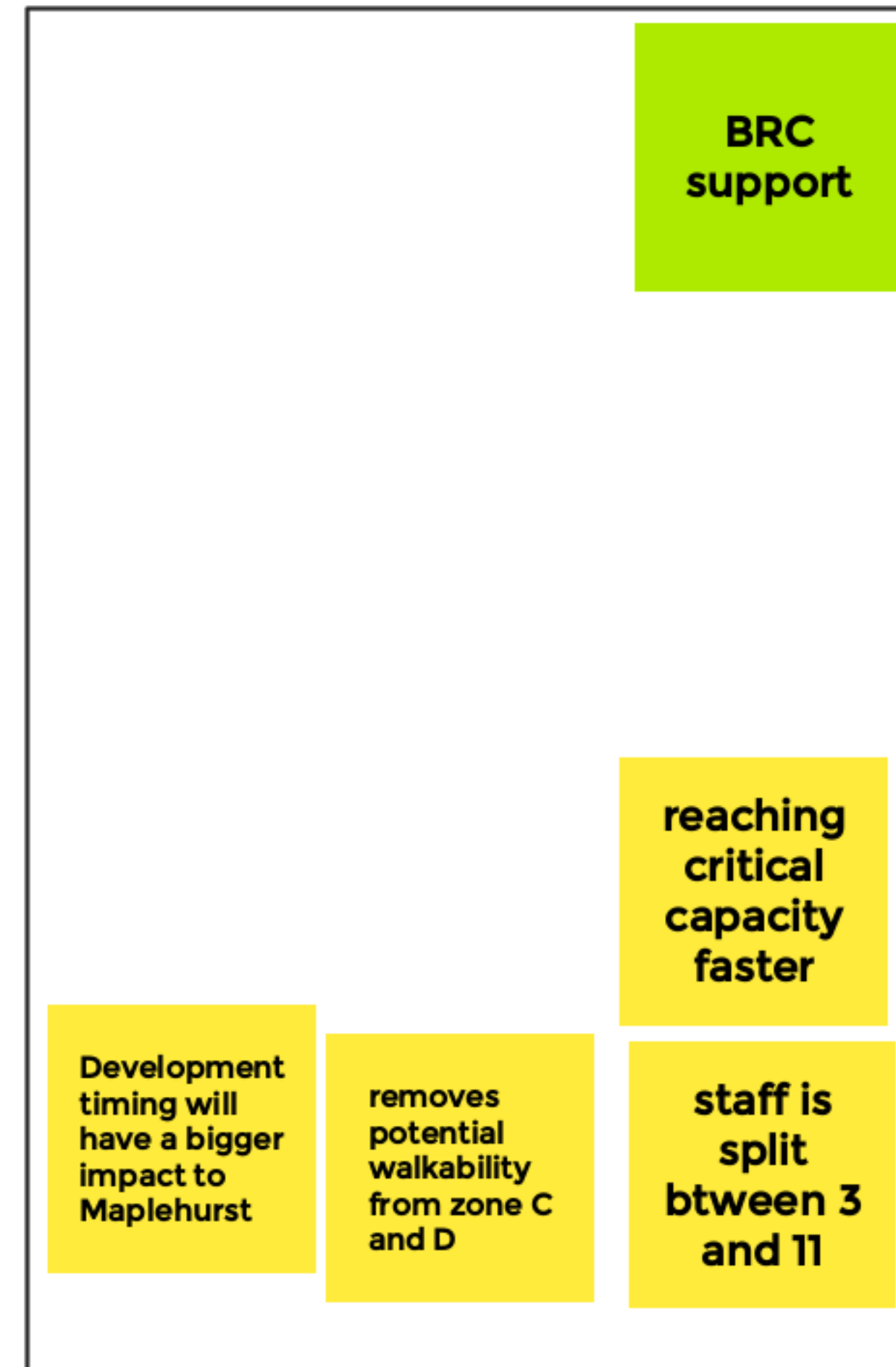
Option 3



Option 10



Option 11



Other

want to make sure there is a viable program at each school and in each grade. both from a student and staff point of view.

the trustees will lean on the BRC for their expertise of the area and the value of the criteria

good input but may have only provided input from specific areas

planning does look at the birth rate and the next few years are higher.