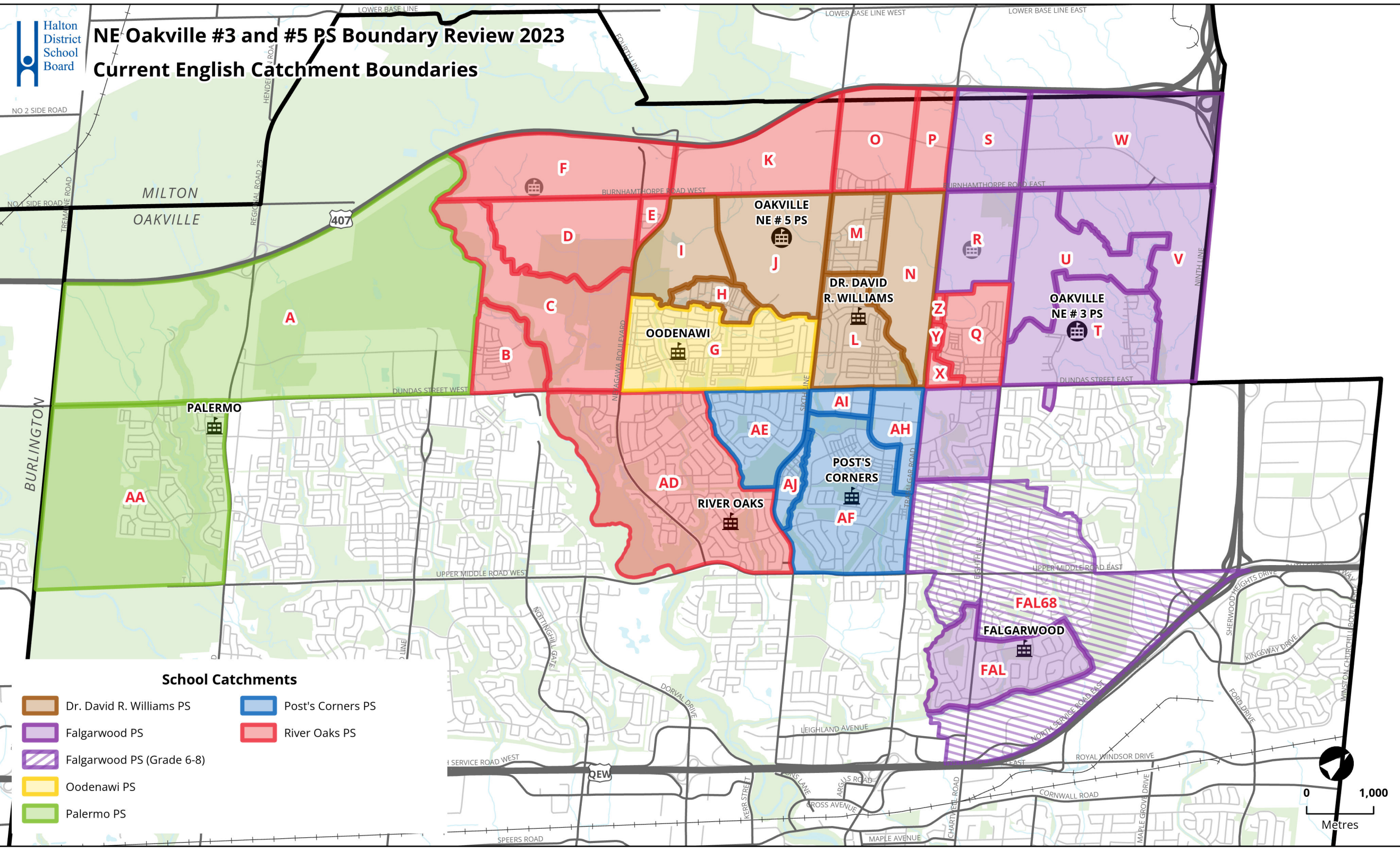




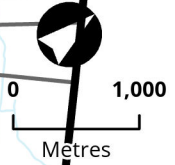
NE Oakville #3 and #5 PS Boundary Review 2023

Current English Catchment Boundaries



School Catchments

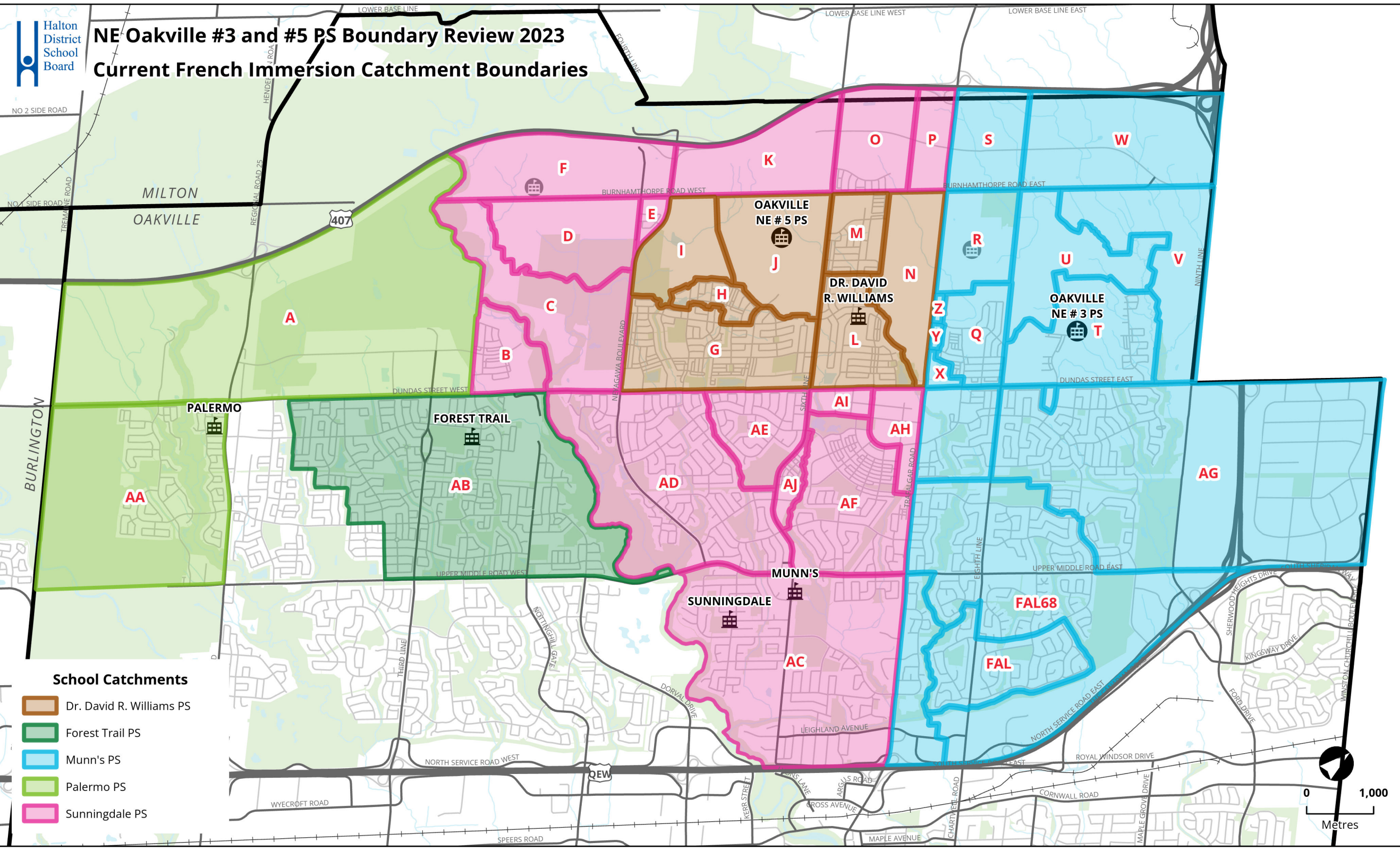
- Dr. David R. Williams PS
- Falgarwood PS
- Falgarwood PS (Grade 6-8)
- Oodenawi PS
- Palermo PS
- Post's Corners PS
- River Oaks PS





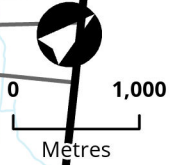
NE Oakville #3 and #5 PS Boundary Review 2023

Current French Immersion Catchment Boundaries



School Catchments

- Dr. David R. Williams PS
- Forest Trail PS
- Munn's PS
- Palermo PS
- Sunningdale PS



Current - Status Quo

Updated: Nov 17, 2023

[What you need to know about this option](#)
[Implementation](#)

School	Building Capacity	Portable	Total Capacity	Program	2023	2024	2025	2026	2027	2028	2029	2030	2031	2032	2033	Notes	
Oakville NE #3 PS	788	Maximum : 18	1202	ENG												School located north of Dundas St, east of Trafalgar Rd. Scheduled to open 2024/2025 school year (subject to change). Programs are TBD.	
		Port: Cap: 414		FI													
				SC-SPED													
				Total													
	Percent Utilization																
Available (+) / Shortage (-) of Pupil Places																	
Estimate number of portables																	
Oakville NE #5 PS	926	Maximum : 18	1340	ENG												School located north of Dundas St, west of Sixth Line. Scheduled to open 2025/2026 school year (scheduled to change). Programs are TBD. *Note that a business case has been submitted to the Ministry for funding for a 6-room addition (increase from 788 to 926 pupil places).	
	788	Port: Cap: 414	1202	FI													
				SC-SPED													
				Total													
	Percent Utilization (926)																
	Available (+) / Shortage (-) of Pupil Places																
	Estimate number of portables																
Percent Utilization (788)																	
Available (+) / Shortage (-) of Pupil Places																	
Estimate number of portables																	
Dr. David R. Williams PS*	792	Maximum : 18	1206	ENG	803	895	1020	1222	1447	1580	1737	1856	1891	1927	1957	School located north of Dundas St. JK-8 English, 2-8 FI. Impacted by development. Students redirected to Palermo PS have been placed back (2024).	
		Port: Cap: 414		FI	377	409	435	473	494	514	517	523	517	512	511		
				SC-SPED	0	0	0	0	0	0	0	0	0	0	0		0
				Total	1180	1303	1455	1695	1941	2094	2254	2379	2407	2439	2468		
	Percent Utilization				149%	165%	184%	214%	245%	264%	285%	300%	304%	308%	312%		
Available (+) / Shortage (-) of Pupil Places				-388	-511	-663	-903	-1149	-1302	-1462	-1587	-1615	-1647	-1676			
Estimate number of portables				24	22	29	39	50	57	64	69	70	72	73			
Falgarwood PS	545	Maximum : 8	729	ENG	476	579	714	837	1006	1187	1317	1476	1648	1776	1904	School located south of Dundas St. JK-8 English, SPED programs. Impacted by development from holding area (north of Dundas St, east of Trafalgar Rd).	
		Port: Cap: 184		FI	0	0	0	0	0	0	0	0	0	0	0		
				SC-SPED	20	20	20	20	20	20	20	20	20	20	20		
				Total	496	599	734	857	1026	1207	1337	1496	1668	1796	1924		
	Percent Utilization				91%	110%	135%	157%	188%	221%	245%	274%	306%	330%	353%		
Available (+) / Shortage (-) of Pupil Places				49	-54	-189	-312	-481	-662	-792	-951	-1123	-1251	-1379			
Estimate number of portables				1	2	8	14	21	29	34	41	49	54	60			
Forest Trail PS	708	Maximum : 12	984	ENG	0	0	0	0	0	0	0	0	0	0	0	School located south of Dundas St. 2-8 FI. No development.	
		Port: Cap: 276		FI	518	535	545	521	506	484	481	479	465	455	475		
				SC-SPED	0	0	0	0	0	0	0	0	0	0	0		
				Total	518	535	545	521	506	484	481	479	465	455	475		
	Percent Utilization				73%	76%	77%	74%	71%	68%	68%	68%	66%	64%	67%		
Available (+) / Shortage (-) of Pupil Places				190	173	163	187	202	224	227	229	243	253	233			
Estimate number of portables				0	0	0	0	0	0	0	0	0	0	0			
Munn's PS	492	Maximum : 12	768	ENG	0	0	0	0	0	0	0	0	0	0	0	School located south of Dundas St. 2-8 FI. Impacted by development from holding area (north of Dundas St, east of Trafalgar Rd).	
		Port: Cap: 276		FI	445	452	457	464	484	515	527	532	542	549	562		
				SC-SPED	0	0	0	0	0	0	0	0	0	0	0		
				Total	445	452	457	464	484	515	527	532	542	549	562		
	Percent Utilization				90%	92%	93%	94%	98%	105%	107%	108%	110%	112%	114%		
Available (+) / Shortage (-) of Pupil Places				47	41	35	28	8	-23	-35	-40	-50	-57	-70			
Estimate number of portables				0	0	0	0	0	1	2	2	2	2	3			
Oodenawi PS	762	Maximum : 18	1176	ENG	1015	1021	999	989	979	944	907	883	862	849	837	School located north of Dundas St. JK-8 English, SPED programs. Impacted by development.	
		Port: Cap: 414		FI	0	0	0	0	0	0	0	0	0	0	0		
				SC-SPED	21	21	21	21	21	21	21	21	21	21	21		
				Total	1036	1042	1020	1010	1000	965	928	904	883	870	858		
	Percent Utilization				136%	137%	134%	133%	131%	127%	122%	119%	116%	114%	113%		
Available (+) / Shortage (-) of Pupil Places				-274	-280	-258	-248	-238	-203	-166	-142	-121	-108	-96			
Estimate number of portables				12	12	11	11	10	9	7	6	5	5	4			

Current - Status Quo

Updated: Nov 17, 2023

[What you need to know about this option Implementation](#)

School	Building Capacity	Portable	Total Capacity	Program	2023	2024	2025	2026	2027	2028	2029	2030	2031	2032	2033	Notes	
Palermo PS	718	Maximum : 12	994	ENG	474	336	322	318	315	315	303	326	362	391	416	School located south of Dundas St. JK-8 English, 2-8 FI, SPED programs. Impacted by development. Students redirected to Palermo PS have been placed back to their home school (2024).	
				FI	115	130	125	120	123	118	118	125	118	120	122		
		SC-SPED		10	10	10	10	10	10	10	10	10	10	10	10		
		Total		599	476	457	448	449	443	431	461	490	521	548			
	<i>Percent Utilization</i>					83%	66%	64%	62%	62%	62%	60%	64%	68%	73%		76%
	<i>Available (+) / Shortage (-) of Pupil Places</i>					119	242	261	270	269	275	287	257	228	197		170
<i>Estimate number of portables</i>					0	0	0	0	0	0	0	0	0	0	0		
Post's Corners PS	600	Maximum : 12	876	ENG	831	876	871	890	910	908	904	908	900	892	877	School located south of Dundas St. JK-8 English, SPED programs. Impacted by development. Students redirected to Palermo PS have been placed back (2024).	
				FI	0	0	0	0	0	0	0	0	0	0	0		
		SC-SPED		10	10	10	10	10	10	10	10	10	10	10			
		Total		841	886	881	900	920	918	914	918	910	902	887			
	<i>Percent Utilization</i>					140%	148%	147%	150%	153%	153%	152%	153%	152%	150%		148%
	<i>Available (+) / Shortage (-) of Pupil Places</i>					-241	-286	-281	-300	-320	-318	-314	-318	-310	-302		-287
<i>Estimate number of portables</i>					12	12	12	13	14	14	14	14	13	13	12		
River Oaks PS	639	Maximum : 6	777	ENG	775	839	894	914	922	974	1012	1085	1164	1250	1284	School located south of Dundas St. JK-8 English. Impacted by development from holding area (north of Dundas St).	
				FI	0	0	0	0	0	0	0	0	0	0	0		
		SC-SPED		0	0	0	0	0	0	0	0	0	0	0			
		Total		775	839	894	914	922	974	1012	1085	1164	1250	1284			
	<i>Percent Utilization</i>					121%	131%	140%	143%	144%	152%	158%	170%	182%	201%		
	<i>Available (+) / Shortage (-) of Pupil Places</i>					-136	-200	-255	-275	-283	-335	-373	-446	-525	-611		-645
<i>Estimate number of portables</i>					6	9	11	12	12	15	16	19	23	27	28		
Sunningdale PS	613	Maximum : 10	843	ENG	0	0	0	0	0	0	0	0	0	0	0	School located south of Dundas St. 2-8 FI. Impacted by development from holding area (north of Dundas St, east of Trafalgar Rd).	
				FI	501	512	521	521	511	519	530	532	533	534	541		
		SC-SPED		0	0	0	0	0	0	0	0	0	0	0			
		Total		501	512	521	521	511	519	530	532	533	534	541			
	<i>Percent Utilization</i>					82%	84%	85%	85%	83%	85%	86%	87%	87%	88%		
	<i>Available (+) / Shortage (-) of Pupil Places</i>					112	101	92	92	102	94	83	81	80	79		72
<i>Estimate number of portables</i>					0	0	0	0	0	0	0	0	0	0	0		

Total Enrolment	6391	6643	6966	7330	7759	8119	8415	8787	9062	9317	9545
Total Portables	55	58	72	89	107	124	137	151	163	173	180

What you need to know about the option

Enrolments are based on October 31, 2023 actual. SPS Scenario 1420 (high yields); updated since original release of projections that were based on September 11, 2023 enrolment Projections assumes redirected students (K-7) return to Post's Corners PS and Dr. David R. Williams PS from Palermo PS for 2024/25; assumes current Gr7 remains at Palermo PS All development timing are a best estimates. Development phasing have been updated as of July 2023

Number of Portables (2023) are actual numbers of portables required based on preliminary classroom usage and organization

Number of portables (2024+) are estimates based on Shortage of Pupil Place / 23 pupils

Oakville NE #4 ps opens 2030/31 (subject to change)

Oakville NE #6 ps opens 2033+ (subject to change)

*In 2023, Dr. David R. Williams PS has a maximum capacity of 1344 (24 portables). From 2024 and beyond, this school will have a maximum capacity of 1206 (18 portables)

Implementation

No change to current boundaries and programs as of June 2023

Oakville NE #3 PS and Oakville NE #5 PS do not open