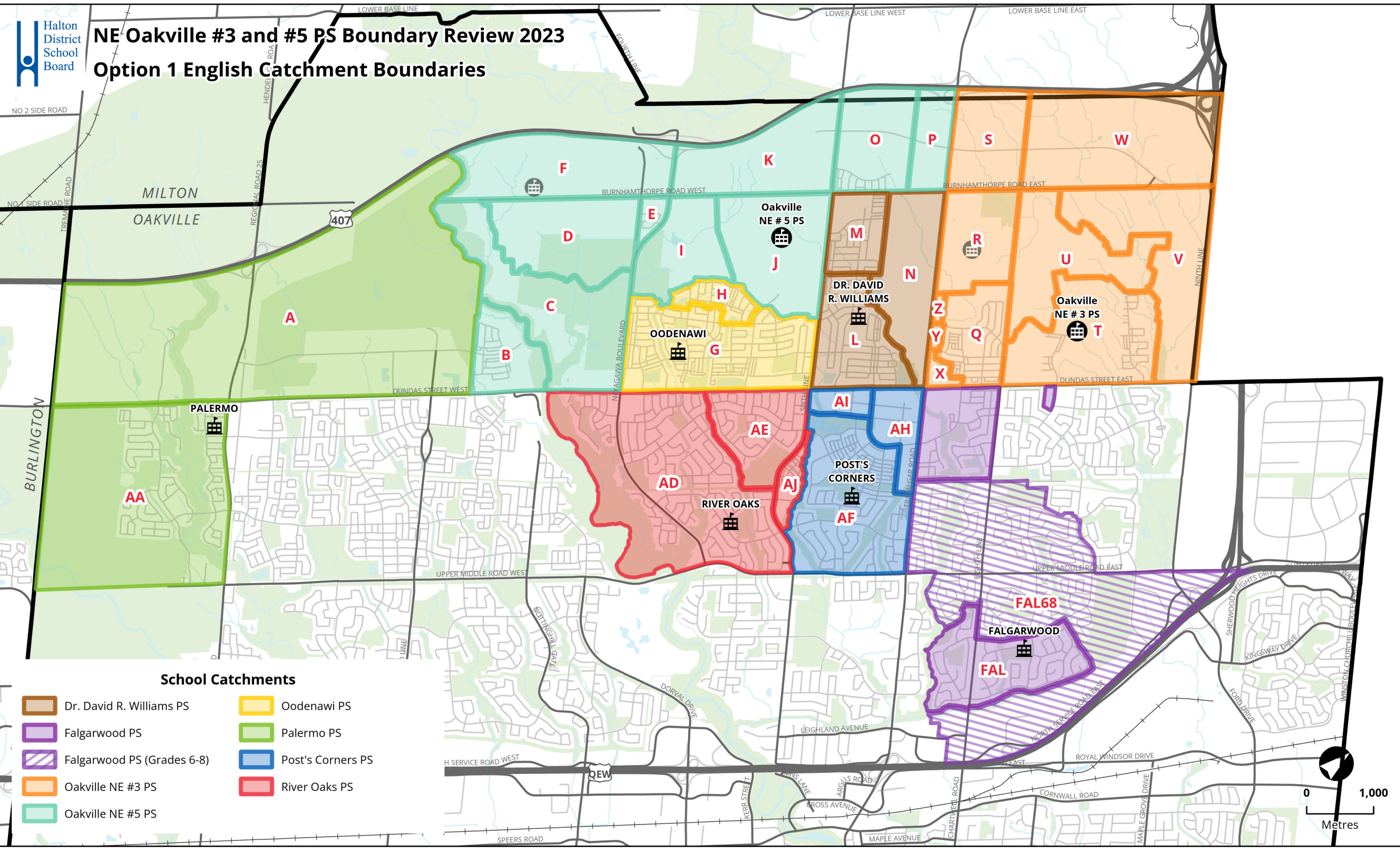




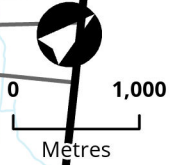
NE Oakville #3 and #5 PS Boundary Review 2023

Option 1 English Catchment Boundaries



School Catchments

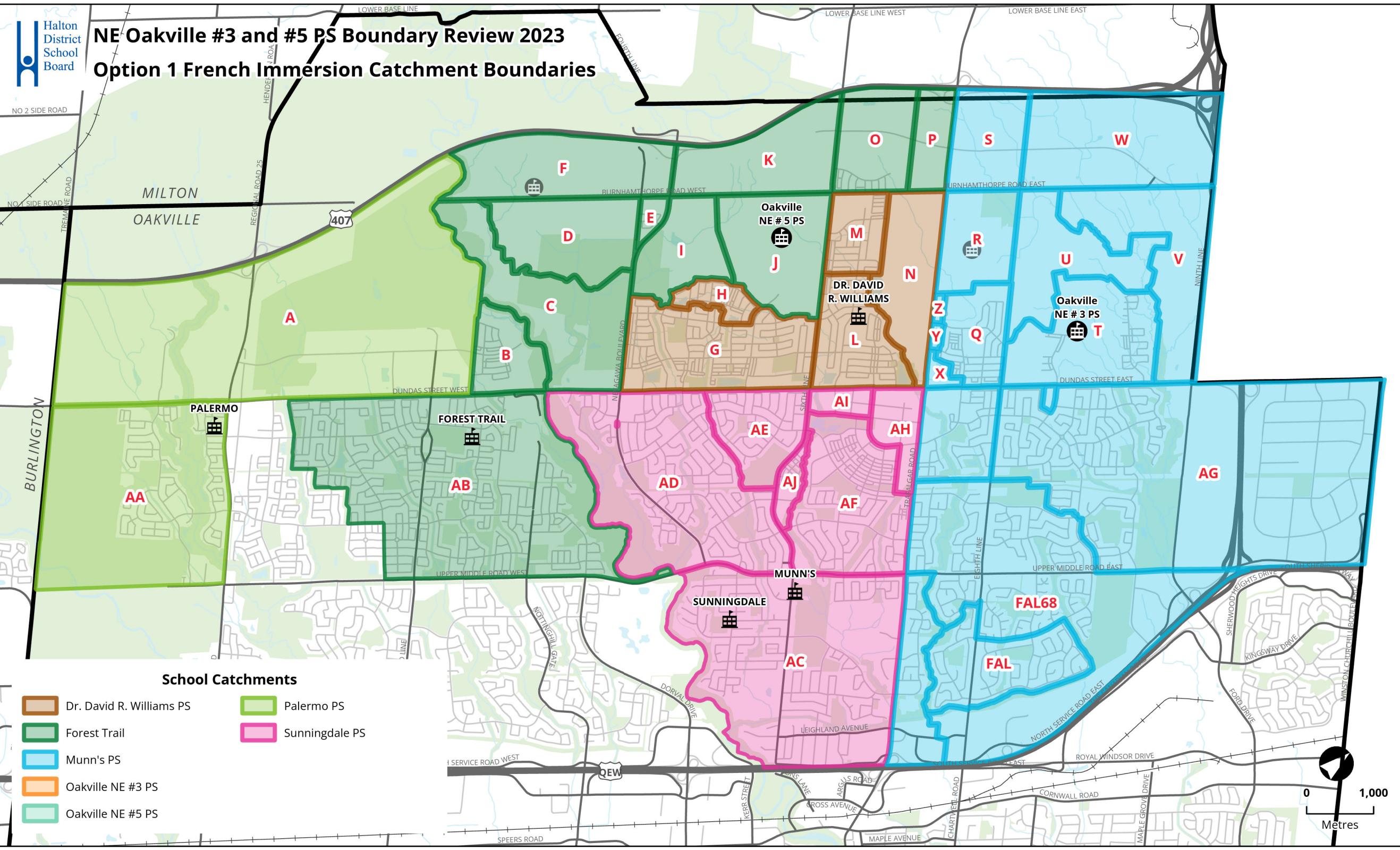
- Dr. David R. Williams PS
- Oodenawi PS
- Falgarwood PS
- Palermo PS
- Falgarwood PS (Grades 6-8)
- Post's Corners PS
- Oakville NE #3 PS
- River Oaks PS
- Oakville NE #5 PS





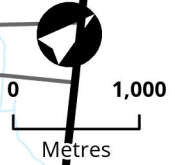
NE Oakville #3 and #5 PS Boundary Review 2023

Option 1 French Immersion Catchment Boundaries



School Catchments

- Dr. David R. Williams PS
- Forest Trail
- Munn's PS
- Oakville NE #3 PS
- Oakville NE #5 PS
- Palermo PS
- Sunningdale PS



Option 1

Updated: Sept 28, 2023

[What you need to know about this option implementation](#)

School	Building Capacity	Portable	Total Capacity	Program	estimate										Notes		
					2023	ONE3 opens 2024	ONE5 opens 2025	2026	2027	2028	2029	ONE4 opens 2030	2031	2032		2033	
Post's Corners PS	600	Maximum : 12 Port: Cap: 276	876	ENG	845	877	724	723	746	748	763	774	768	762	748	School located south of Dundas St. JK-8 English, SPED programs. Impacted by development. Students redirected to Palermo PS have been placed back (2024).	
				FI	0	0	0	0	0	0	0	0	0	0	0		
				SC-SPED	10	10	10	10	10	10	10	10	10	10	10		10
				Total	855	887	734	733	756	758	773	784	778	772	758		
	<i>Percent Utilization</i>				143%	148%	122%	122%	126%	126%	129%	131%	130%	129%	126%		
	<i>Available (+) / Shortage (-) of Pupil Places</i>				-255	-287	-134	-133	-156	-158	-173	-184	-178	-172	-158		
<i>Estimate number of portables</i>				12	12	6	6	7	7	8	8	8	7	7			
River Oaks PS	639	Maximum : 6 Port: Cap: 138	777	ENG	763	551	540	523	506	486	458	434	424	421	413	School located south of Dundas St. JK-8 English. Not a holding school for north of Dundas St. No impact from development.	
				FI	0	0	0	0	0	0	0	0	0	0	0		
				SC-SPED	0	0	0	0	0	0	0	0	0	0	0		
				Total	763	551	540	523	506	486	458	434	424	421	413		
	<i>Percent Utilization</i>				119%	86%	85%	82%	79%	76%	72%	68%	66%	66%	65%		
	<i>Available (+) / Shortage (-) of Pupil Places</i>				-124	88	99	116	133	153	181	205	215	218	226		
<i>Estimate number of portables</i>				6	0	0	0	0	0	0	0	0	0	0			
Sunningdale PS	613	Maximum : 10 Port: Cap: 230	843	ENG	0	0	0	0	0	0	0	0	0	0	0	School located south of Dundas St. 2-8 FI. Not a holding school for north of Dundas St. No impact from development from north of Dundas St.	
				FI	500	491	493	490	493	498	504	496	487	477	479		
				SC-SPED	0	0	0	0	0	0	0	0	0	0	0		
				Total	500	491	493	490	493	498	504	496	487	477	479		
	<i>Percent Utilization</i>				82%	80%	80%	80%	80%	81%	82%	81%	79%	78%	78%		
	<i>Available (+) / Shortage (-) of Pupil Places</i>				113	122	121	123	120	115	109	117	126	136	134		
<i>Estimate number of portables</i>				0	0	0	0	0	0	0	0	0	0	0			

Total Enrolment	6310	6561	6883	7249	7718	8085	8399	8772	9058	9315	9534
Total Portables	55	45	37	42	53	63	77	93	105	116	124

What you need to know about the option

Enrolments are based on September 11, 2023 actual. SPS Scenario 1420 (high yields); projections will be updated with Oct 2023 actuals

Projections assumes redirected students (K-7) return to Post's Corners PS and Dr. David R. Williams PS from Palermo PS for 2024/25; assumes current Gr7 remains at Palermo PS

All development timing are a best estimates. Development phasing have been updated as of July 2023

Number of Portables (2023) are actual numbers of portables required based on preliminary classroom usage and organization

Number of portables (2024+) are estimates based on Shortage of Pupil Place / 23 pupils

Oakville NE #4 ps opens 2030/31 (subject to change)

Oakville NE #6 ps opens 2033+ (subject to change)

Implementation

Oakville NE #3 PS opens 2024/25 as K-7 ENG school, Gr8 ENG added 2025/26

Oakville NE #5 PS opens 2025/26 as K-7 ENG school, Gr8 ENG added 2026/27