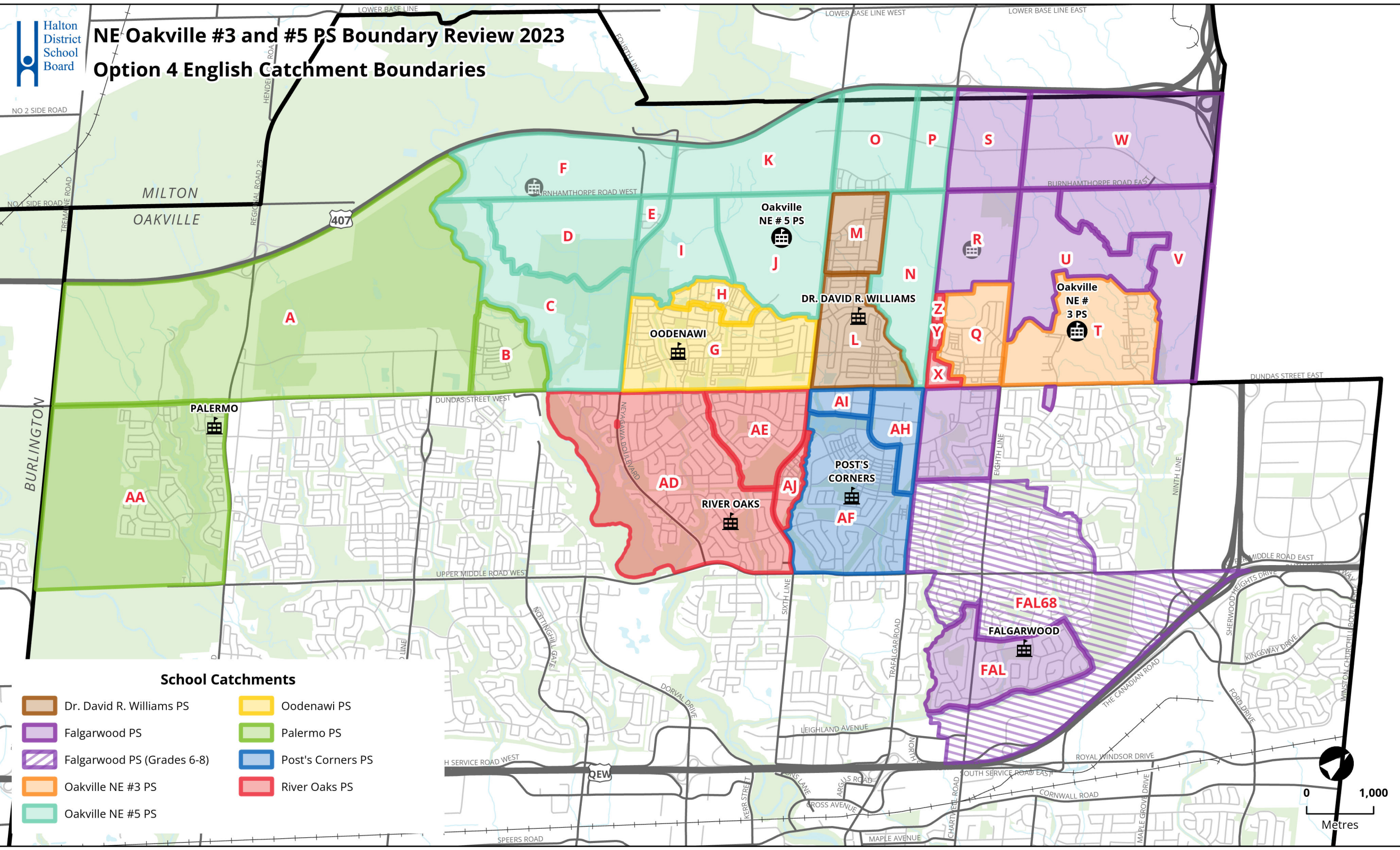




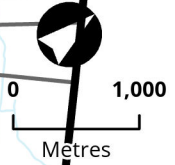
NE Oakville #3 and #5 PS Boundary Review 2023

Option 4 English Catchment Boundaries



School Catchments

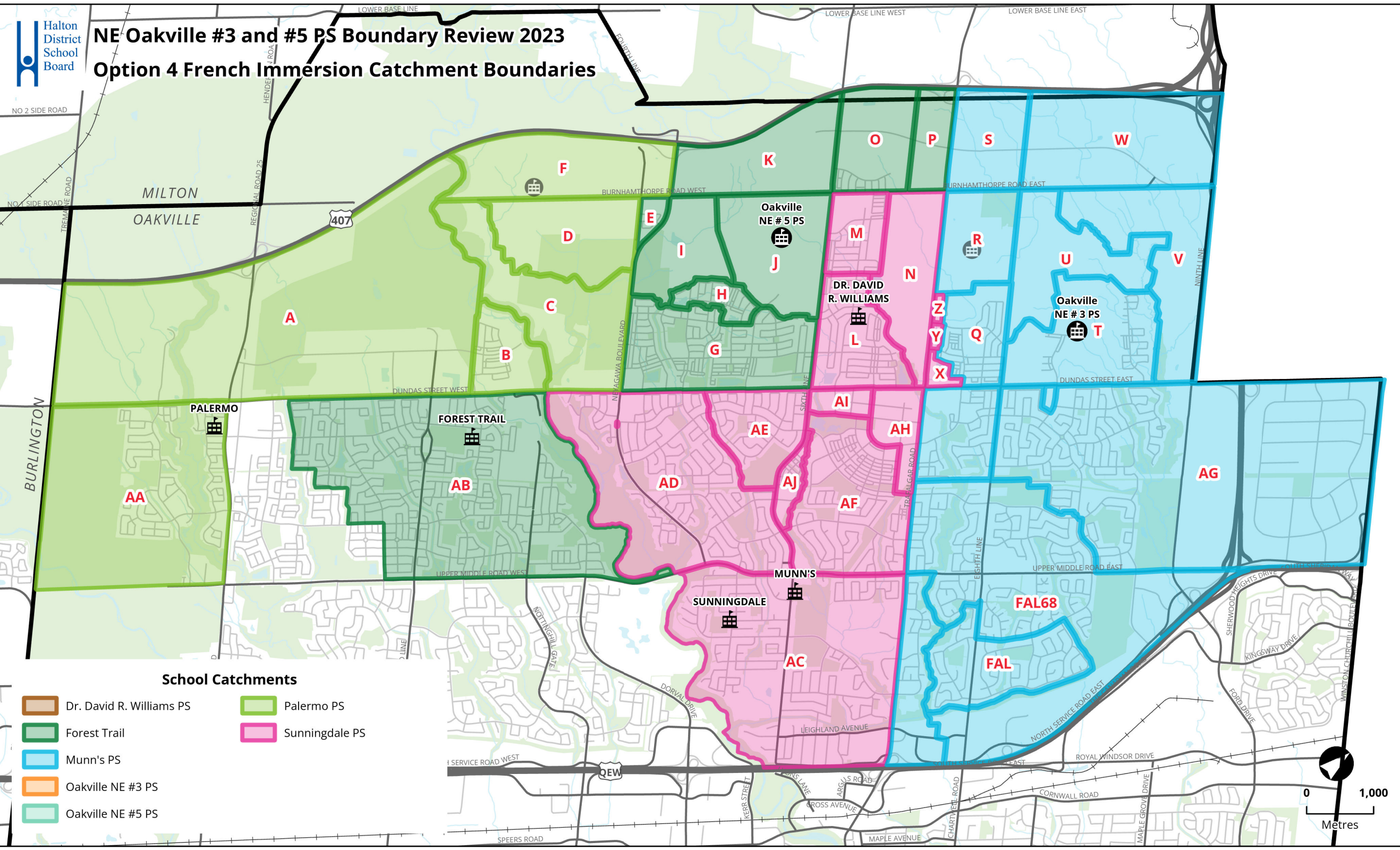
- Dr. David R. Williams PS
- Oodenawi PS
- Falgarwood PS
- Palermo PS
- Falgarwood PS (Grades 6-8)
- Post's Corners PS
- Oakville NE #3 PS
- River Oaks PS
- Oakville NE #5 PS





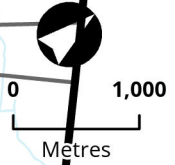
NE Oakville #3 and #5 PS Boundary Review 2023

Option 4 French Immersion Catchment Boundaries



School Catchments

- Dr. David R. Williams PS
- Forest Trail
- Munn's PS
- Oakville NE #3 PS
- Oakville NE #5 PS
- Palermo PS
- Sunningdale PS



Option 4

Updated: Sept 28, 2023

[What you need to know about this option implementation](#)

School	Building Capacity	Portable	Total Capacity	Program	estimate										Notes	
					2023	ONE3 opens 2024	ONE5 opens 2025	2026	2027	2028	2029	ONE4 opens 2030	2031	2032		2033
Post's Corners PS	600	Maximum : 12 Port: Cap: 276	876	ENG	845	877	724	723	746	748	763	774	768	762	748	School located south of Dundas St. JK-8 English, SPED programs. Impacted by development. Students redirected to Palermo PS have been placed back (2024).
				FI	0	0	0	0	0	0	0	0	0	0	0	
				SC-SPED	10	10	10	10	10	10	10	10	10	10	10	
				Total	855	887	734	733	756	758	773	784	778	772	758	
	<i>Percent Utilization</i>				143%	148%	122%	122%	126%	126%	129%	131%	130%	129%	126%	
	<i>Available (+) / Shortage (-) of Pupil Places</i>				-255	-287	-134	-133	-156	-158	-173	-184	-178	-172	-158	
<i>Estimate number of portables</i>				12	12	6	6	7	7	8	8	8	7	7		
River Oaks PS	639	Maximum : 6 Port: Cap: 138	777	ENG	763	526	608	639	650	658	653	644	634	626	614	School located south of Dundas St. JK-8 English. Impacted by development from holding area (north of Dundas St, east of Trafalgar Rd). Holding potential students for future ONE #4 ps.
				FI	0	0	0	0	0	0	0	0	0	0		
				SC-SPED	0	0	0	0	0	0	0	0	0	0		
				Total	763	526	608	639	650	658	653	644	634	626	614	
	<i>Percent Utilization</i>				119%	82%	95%	100%	102%	103%	102%	101%	99%	98%	96%	
	<i>Available (+) / Shortage (-) of Pupil Places</i>				-124	113	31	0	-11	-19	-14	-5	5	13	25	
<i>Estimate number of portables</i>				6	0	0	0	0	1	1	0	0	0	0		
Sunningdale PS	613	Maximum : 10 Port: Cap: 230	843	ENG	0	0	0	0	0	0	0	0	0	0	School located south of Dundas St. 2-8 FI. FI school for Dr DRW PS. Impact from development.	
				FI	500	657	681	681	683	697	698	677	667	658		660
				SC-SPED	0	0	0	0	0	0	0	0	0	0		0
				Total	500	657	681	681	683	697	698	677	667	658		660
	<i>Percent Utilization</i>				82%	107%	111%	111%	111%	114%	114%	110%	109%	107%		108%
	<i>Available (+) / Shortage (-) of Pupil Places</i>				113	-44	-68	-68	-70	-84	-85	-64	-54	-45		-47
<i>Estimate number of portables</i>				0	2	3	3	3	4	4	3	2	2	2		

Total Enrolment	6310	6558	6878	7244	7714	8083	8400	8776	9062	9319	9538
Total Portables	55	32	25	24	31	36	44	57	68	78	87

What you need to know about the option

Enrolments are based on September 11, 2023 actual. SPS Scenario 1420 (high yields); projections will be updated with Oct 2023 actuals
 Projections assumes redirected students (K-7) return to Post's Corners PS and Dr. David R. Williams PS from Palermo PS for 2024/25; assumes current Gr7 remains at Palermo PS
 All development timing are a best estimates. Development phasing have been updated as of July 2023
 Number of Portables (2023) are actual numbers of portables required based on preliminary classroom usage and organization
 Number of portables (2024+) are estimates based on Shortage of Pupil Place / 23 pupils
 Oakville NE #4 ps opens 2030/31 (subject to change)
 Oakville NE #6 ps opens 2033+ (subject to change)

Implementation

Oakville NE #3 PS opens 2024/25 as K-7 ENG school, Gr8 ENG added 2025/26
 Oakville NE #5 PS opens 2025/26 as K-7 ENG school, Gr8 ENG added 2026/27
 Dr. David R. Williams PS FI program is Gr8 in 2024/25