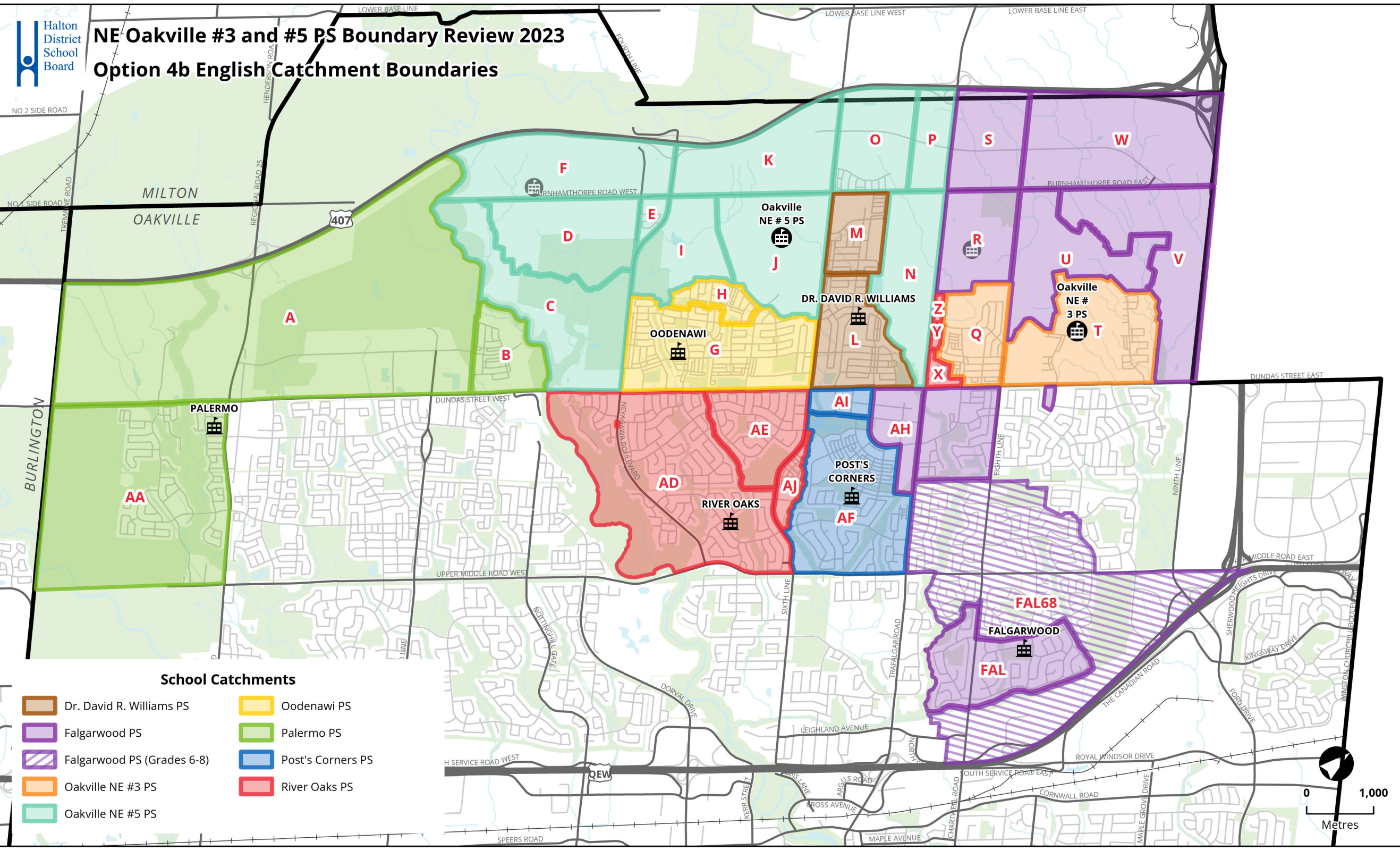




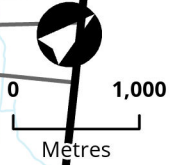
NE Oakville #3 and #5 PS Boundary Review 2023

Option 4b English Catchment Boundaries



School Catchments

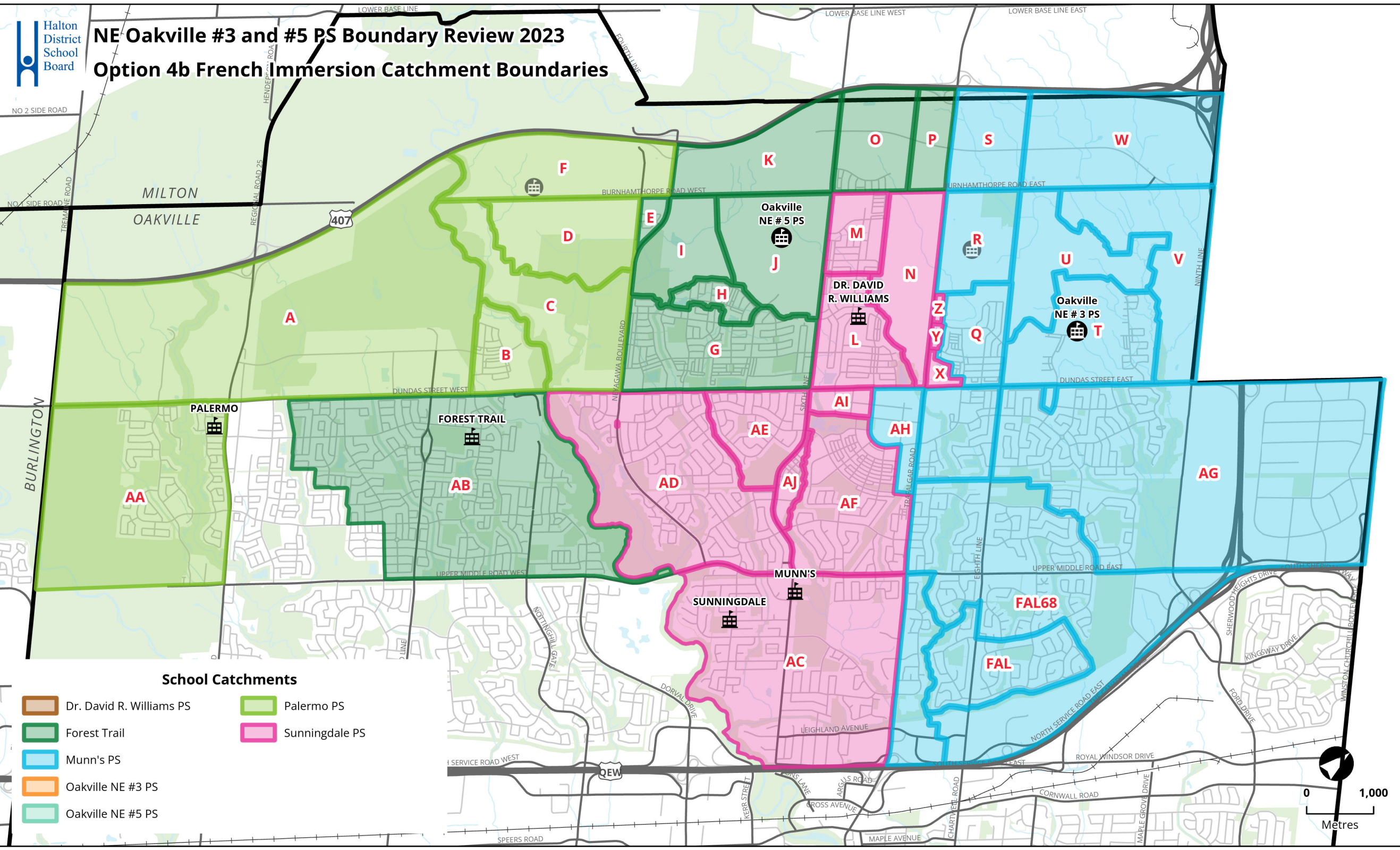
- Dr. David R. Williams PS
- Falgarwood PS
- Falgarwood PS (Grades 6-8)
- Oakville NE #3 PS
- Oakville NE #5 PS
- Oodenawi PS
- Palermo PS
- Post's Corners PS
- River Oaks PS





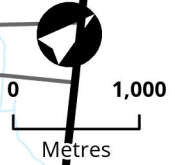
NE Oakville #3 and #5 PS Boundary Review 2023

Option 4b French Immersion Catchment Boundaries



School Catchments

- Dr. David R. Williams PS
- Palermo PS
- Forest Trail
- Sunningdale PS
- Munn's PS
- Oakville NE #3 PS
- Oakville NE #5 PS



Option 4b

Created: Oct 31, 2023

[What you need to know about this option](#)

[Implementation](#)

School	Building Capacity	Portable	Total Capacity	Program	2023	ONE3 opens	ONE5 opens	2026	2027	2028	2029	estimate ONE4 opens	estimate ONE6 opens	Notes			
						2024	2025					2030	2032		2033		
Post's Corners PS	600	Maximum : 12	876	ENG	845	653	646	611	609	600	599	596	595	587	School located south of Dundas St. JK-8 English, SPED programs. Impacted by development. Students redirected to Palermo PS have been placed back (2024).		
				FI	0	0	0	0	0	0	0	0	0	0		0	
		SC-SPED		10	10	10	10	10	10	10	10	10	10	10			
		Total		855	663	656	621	619	610	609	606	605	597	582			
	<i>Percent Utilization</i>					143%	111%	109%	104%	103%	102%	102%	101%	101%		100%	97%
	<i>Available (+) / Shortage (-) of Pupil Places</i>					-255	-63	-56	-21	-19	-10	-9	-6	-5		3	18
<i>Estimate number of portables</i>					12	3	2	1	1	0	0	0	0	0	0		
River Oaks PS	639	Maximum : 6	777	ENG	763	665	608	639	650	658	653	644	634	626	614	School located south of Dundas St. JK-8 English. Impacted by development from holding area (north of Dundas St, east of Trafalgar Rd). Holding potential students for future ONE #4 ps.	
				FI	0	0	0	0	0	0	0	0	0	0	0		
		SC-SPED		0	0	0	0	0	0	0	0	0	0	0			
		Total		763	665	608	639	650	658	653	644	634	626	614			
	<i>Percent Utilization</i>					119%	104%	95%	100%	102%	103%	102%	101%	99%	98%		96%
	<i>Available (+) / Shortage (-) of Pupil Places</i>					-124	-26	31	0	-11	-19	-14	-5	5	13		25
<i>Estimate number of portables</i>					6	1	0	0	0	1	1	0	0	0	0		
Sunningdale PS	613	Maximum : 10	843	ENG	0	0	0	0	0	0	0	0	0	0	0	School located south of Dundas St. 2-8 FI. FI school for Dr DRW PS. Impact from development.	
				FI	500	652	674	668	667	680	678	656	647	638	640		
		SC-SPED		0	0	0	0	0	0	0	0	0	0	0			
		Total		500	652	674	668	667	680	678	656	647	638	640			
	<i>Percent Utilization</i>					82%	106%	110%	109%	109%	111%	111%	107%	106%	104%		104%
	<i>Available (+) / Shortage (-) of Pupil Places</i>					113	-39	-61	-55	-54	-67	-65	-43	-34	-25		-27
<i>Estimate number of portables</i>					0	2	3	2	2	3	3	2	1	1	1		
Total Enrolment					6310	6559	6878	7246	7716	8084	8402	8776	9064	9322	9539		
Total Portables					55	23	22	18	25	32	42	57	68	78	88		

[What you need to know about the option](#)

Enrolments are based on September 11, 2023 actual. SPS Scenario 1420 (high yields); projections will be updated with Oct 2023 actuals

Projections assumes redirected students (K-7) return to Post's Corners PS and Dr. David R. Williams PS from Palermo PS for 2024/25; assumes current Gr7 remains at Palermo PS

All development timing are a best estimates. Development phasing have been updated as of July 2023

Number of Portables (2023) are actual numbers of portables required based on preliminary classroom usage and organization

Number of portables (2024+) are estimates based on Shortage of Pupil Place / 23 pupils

Oakville NE #4 ps opens 2030/31 (subject to change)

Oakville NE #6 ps opens 2033+ (subject to change)

*In 2023, Dr. David R. Williams PS has a maximum capacity of 1344 (24 portables). From 2024 and beyond, this school will have a maximum capacity of 1206 (18 portables)

[Implementation](#)

Oakville NE #3 PS opens 2024/25 as K-7 ENG school, Gr8 ENG added 2025/26

Oakville NE #5 PS opens 2025/26 as K-7 ENG school, Gr8 ENG added 2026/27

Dr. David R. Williams PS FI program is Gr8 in 2024/25