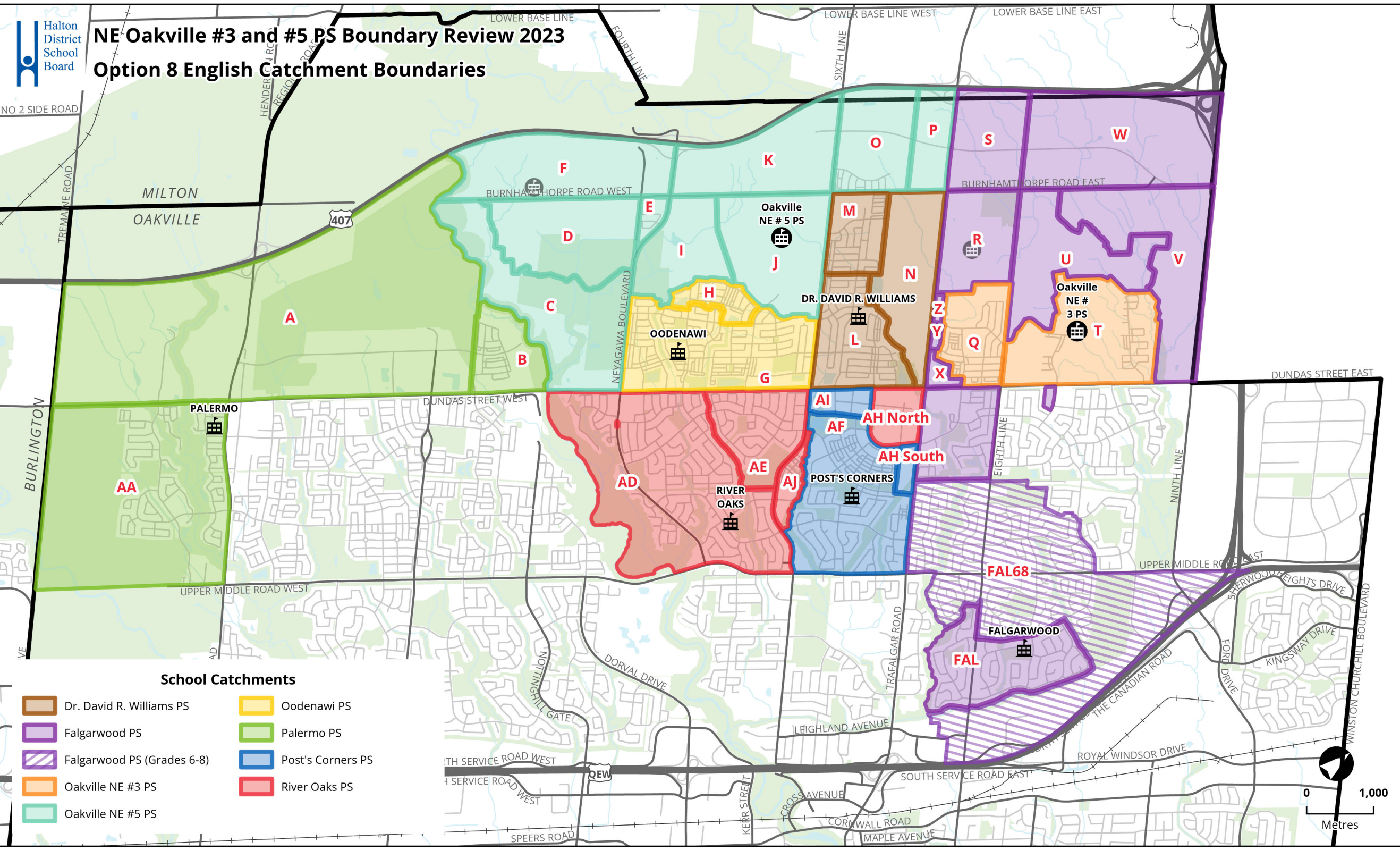




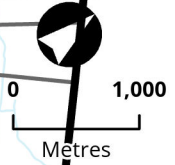
NE Oakville #3 and #5 PS Boundary Review 2023

Option 8 English Catchment Boundaries



School Catchments

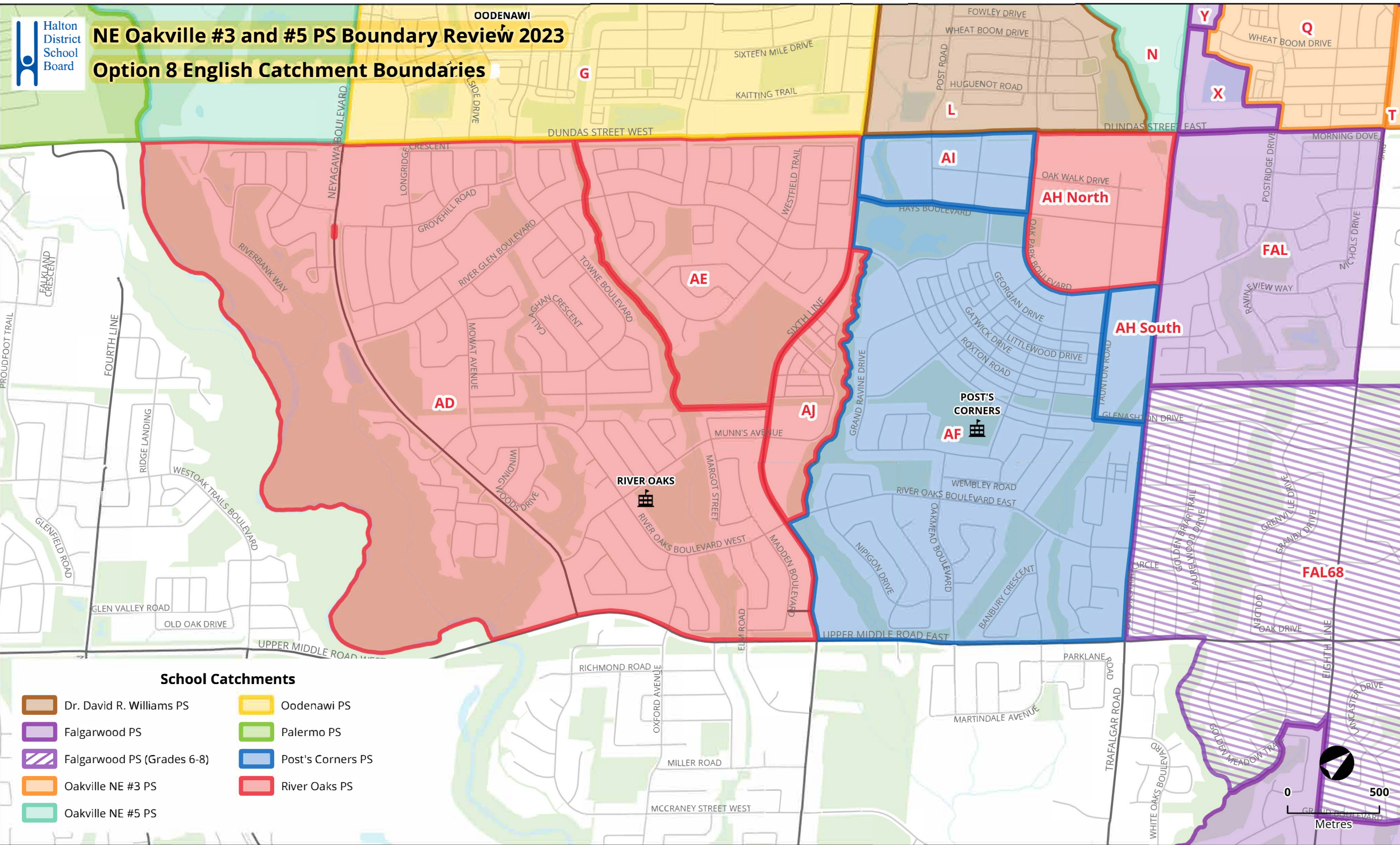
- Dr. David R. Williams PS
- Falgarwood PS
- Falgarwood PS (Grades 6-8)
- Oakville NE #3 PS
- Oodenawi PS
- Palermo PS
- Post's Corners PS
- River Oaks PS
- Oakville NE #5 PS





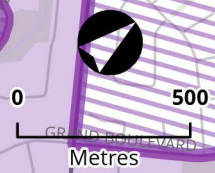
NE Oakville #3 and #5 PS Boundary Review 2023

Option 8 English Catchment Boundaries



School Catchments

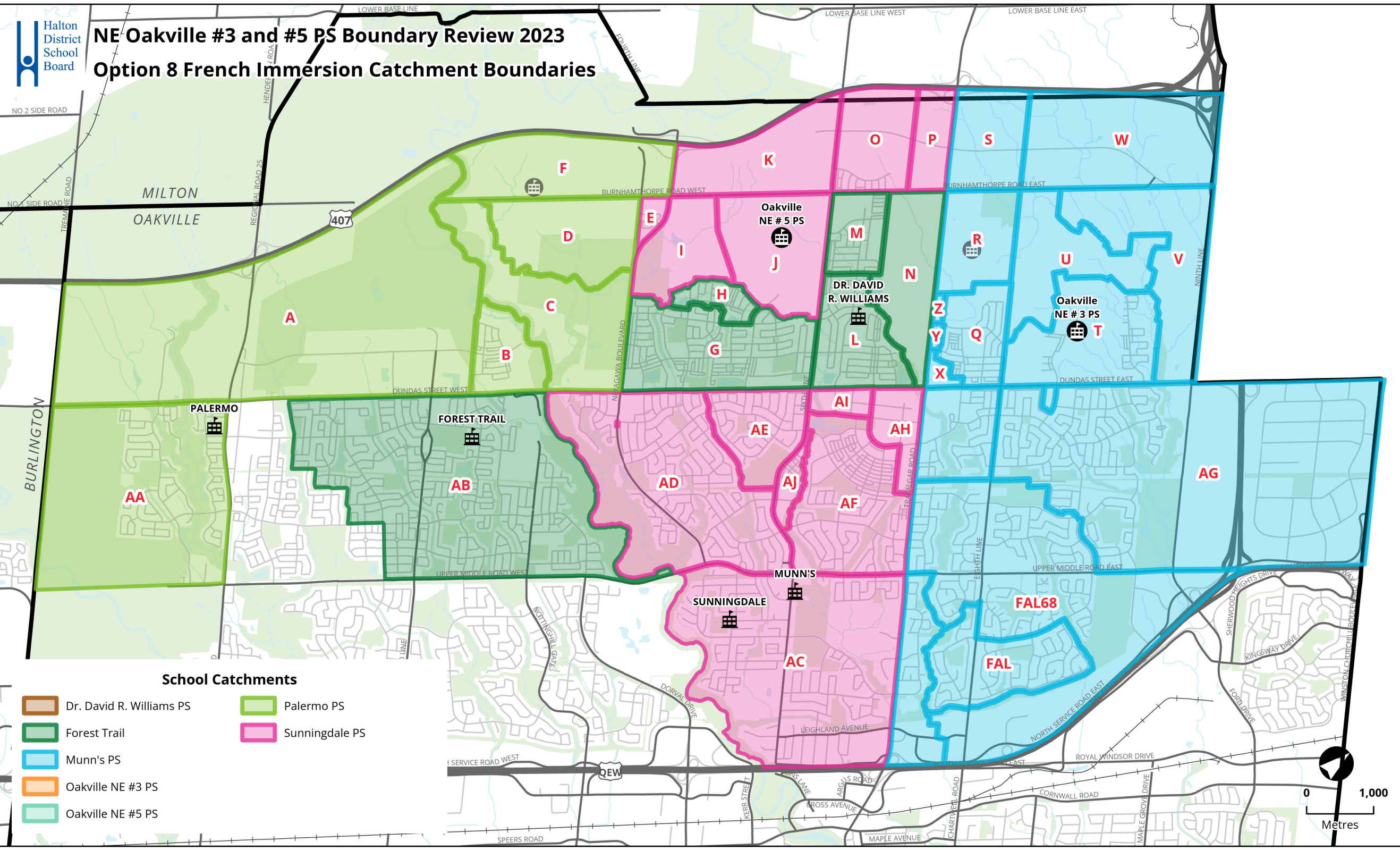
- Dr. David R. Williams PS
- Falgarwood PS
- Falgarwood PS (Grades 6-8)
- Oakville NE #3 PS
- Oakville NE #5 PS
- Oodenawi PS
- Palermo PS
- Post's Corners PS
- River Oaks PS





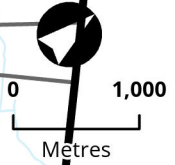
NE Oakville #3 and #5 PS Boundary Review 2023

Option 8 French Immersion Catchment Boundaries



School Catchments

- Dr. David R. Williams PS
- Palermo PS
- Forest Trail
- Sunningdale PS
- Munn's PS
- Oakville NE #3 PS
- Oakville NE #5 PS



Option 8

Created: Nov 17, 2023

[What you need to know about this option](#)

[Implementation](#)

School	Building Capacity	Portable	Total Capacity	Program	2023	2024	ONE3	ONE5	2027	2028	2029	estimate		estimate		Notes
							opens	opens				ONE4	opens	ONE6	opens	
Post's Corners PS	600	Maximum : 12 Port: Cap: 276	876	ENG	831	876	710	687	661	617	616	616	612	610	605	School located south of Dundas St. JK-8 English, SPED programs. Impacted by development. Students redirected to Palermo PS have been placed back (2024).
				FI	0	0	0	0	0	0	0	0	0	0	0	
				SC-SPED	10	10	10	10	10	10	10	10	10	10	10	
	Total	841	886	720	697	671	627	626	626	622	620	615				
	Percent Utilization				140%	148%	120%	116%	112%	105%	104%	104%	104%	103%	103%	
	Available (+) / Shortage (-) of Pupil Places				-241	-286	-120	-97	-71	-27	-26	-26	-22	-20	-15	
Estimate number of portables				12	12	5	4	3	1	1	1	1	1	1		
River Oaks PS	639	Maximum : 6 Port: Cap: 138	777	ENG	775	739	633	562	590	613	600	587	575	570	556	School located south of Dundas St. JK-8 English. No longer a holding school for north of Dundas St. No impact from development.
				FI	0	0	0	0	0	0	0	0	0	0	0	
				SC-SPED	0	0	0	0	0	0	0	0	0	0	0	
	Total	775	739	633	562	590	613	600	587	575	570	556				
	Percent Utilization				121%	116%	99%	88%	92%	96%	94%	92%	90%	89%	87%	
	Available (+) / Shortage (-) of Pupil Places				-136	-100	6	78	49	26	40	52	64	69	83	
Estimate number of portables				6	4	0	0	0	0	0	0	0	0	0		
Sunningdale PS	613	Maximum : 10 Port: Cap: 230	843	ENG	0	0	0	0	0	0	0	0	0	0	0	School located south of Dundas St. 2-8 FI. FI school for Oakville NE # 5 PS. Impact from development.
				FI	501	508	522	541	555	568	585	590	587	585	592	
				SC-SPED	0	0	0	0	0	0	0	0	0	0	0	
	Total	501	508	522	541	555	568	585	590	587	585	592				
	Percent Utilization				82%	83%	85%	88%	90%	93%	95%	96%	96%	95%	97%	
	Available (+) / Shortage (-) of Pupil Places				112	105	91	72	58	45	29	23	26	29	21	
Estimate number of portables				0	0	0	0	0	0	0	0	0	0	0		

Total Enrolment	6391	6640	6961	7329	7759	8122	8423	8799	9074	9328	9556
Total Portables	55	48	37	31	34	40	46	60	70	80	90

What you need to know about the option *a combination of Options 6 and X2

Enrolments are based on October 31, 2023 actual. SPS Scenario 1420 (high yields); updated since original release of projections that were based on September 11, 2023 enrolment

Projections assumes redirected students (K-7) return to Post's Corners PS and Dr. David R. Williams PS from Palermo PS for 2024/25; assumes current Gr7 remains at Palermo PS

All development timing are a best estimates. Development phasing have been updated as of July 2023

Number of Portables (2023) are actual numbers of portables required based on preliminary classroom usage and organization

Number of portables (2024+) are estimates based on Shortage of Pupil Place / 23 pupils

Oakville NE #4 ps opens 2030/31 (subject to change)

Oakville NE #6 ps opens 2033+ (subject to change)

*In 2023, Dr. David R. Williams PS has a maximum capacity of 1344 (24 portables). From 2024 and beyond, this school will have a maximum capacity of 1206 (18 portables)

Implementation

Oakville NE #3 PS opens 2025/26 as K-7 ENG school, Gr8 ENG added 2026/27

Oakville NE #5 PS opens 2026/27 as K-7 ENG school, Gr8 ENG added 2027/28

Post's Corners PS new boundary implemented starts when ONE #3 PS opens (2025/26)

The following schools have their new boundaries implemented starting 2024/25 with legacy exceptions for Gr8: Palermo, Sunningdale, Falgarwood (N of Dundas), River Oaks (N of Dundas)

GRADE 6-8 LEGACY EXEMPTION The following schools have their new boundaries implemented starting 2024/25: Dr. DRW, Forest Trail, Oodenawi and Sunningdale (students moving from Dr DRW)

GRADE 6-8 LEGACY EXEMPTION The following schools have their new boundaries implemented starting 2025/26: River Oaks (S of Dundas), Post's Corners (S of Dundas)

Dr. David R. Williams PS FI program is Gr6-8 in 2024/25; Gr7-8 in 2025/26; Gr8 in 2026/27