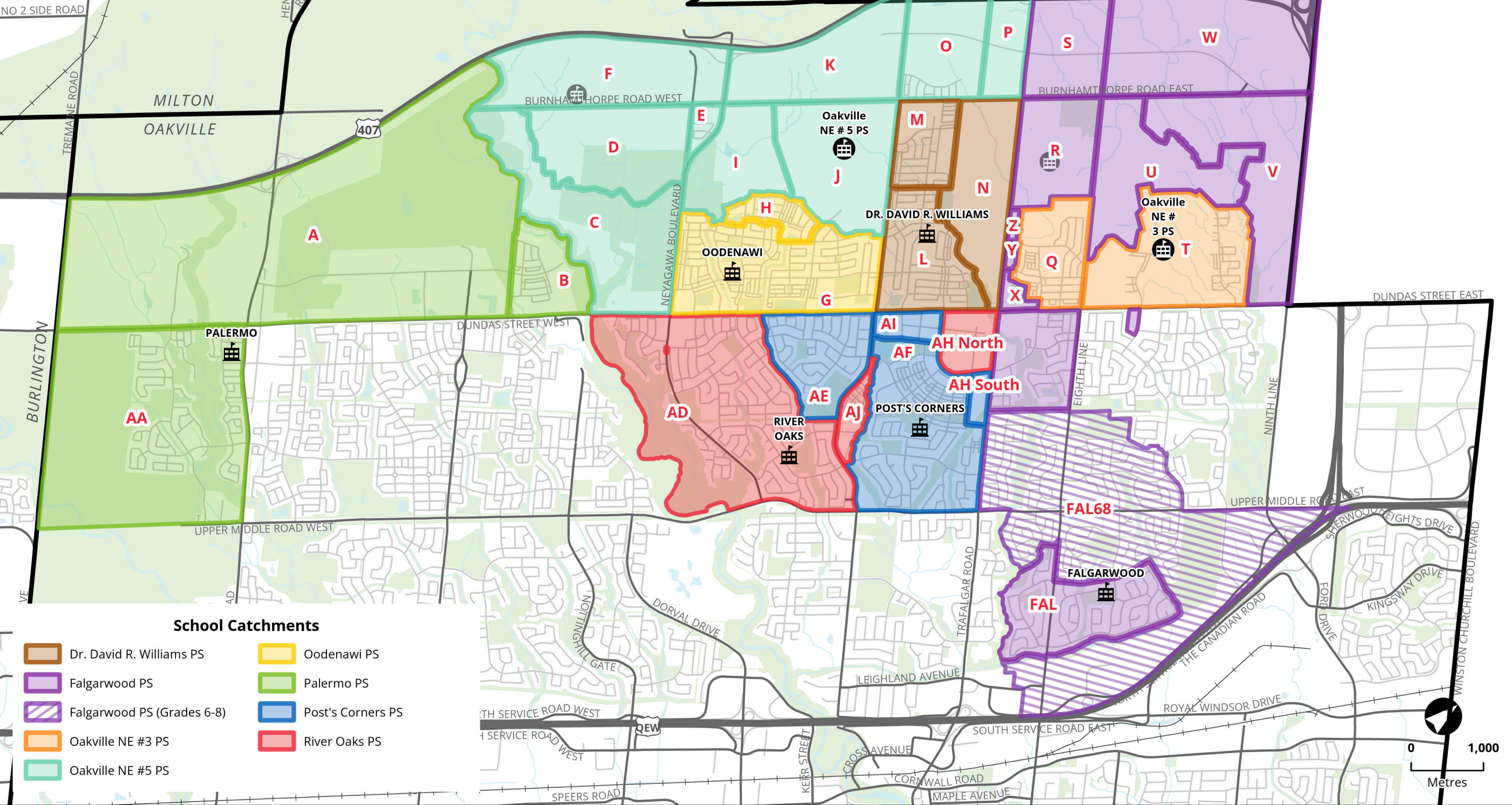




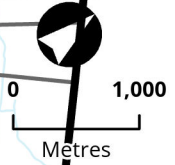
NE Oakville #3 and #5 PS Boundary Review 2023

Option 9 English Catchment Boundaries



School Catchments

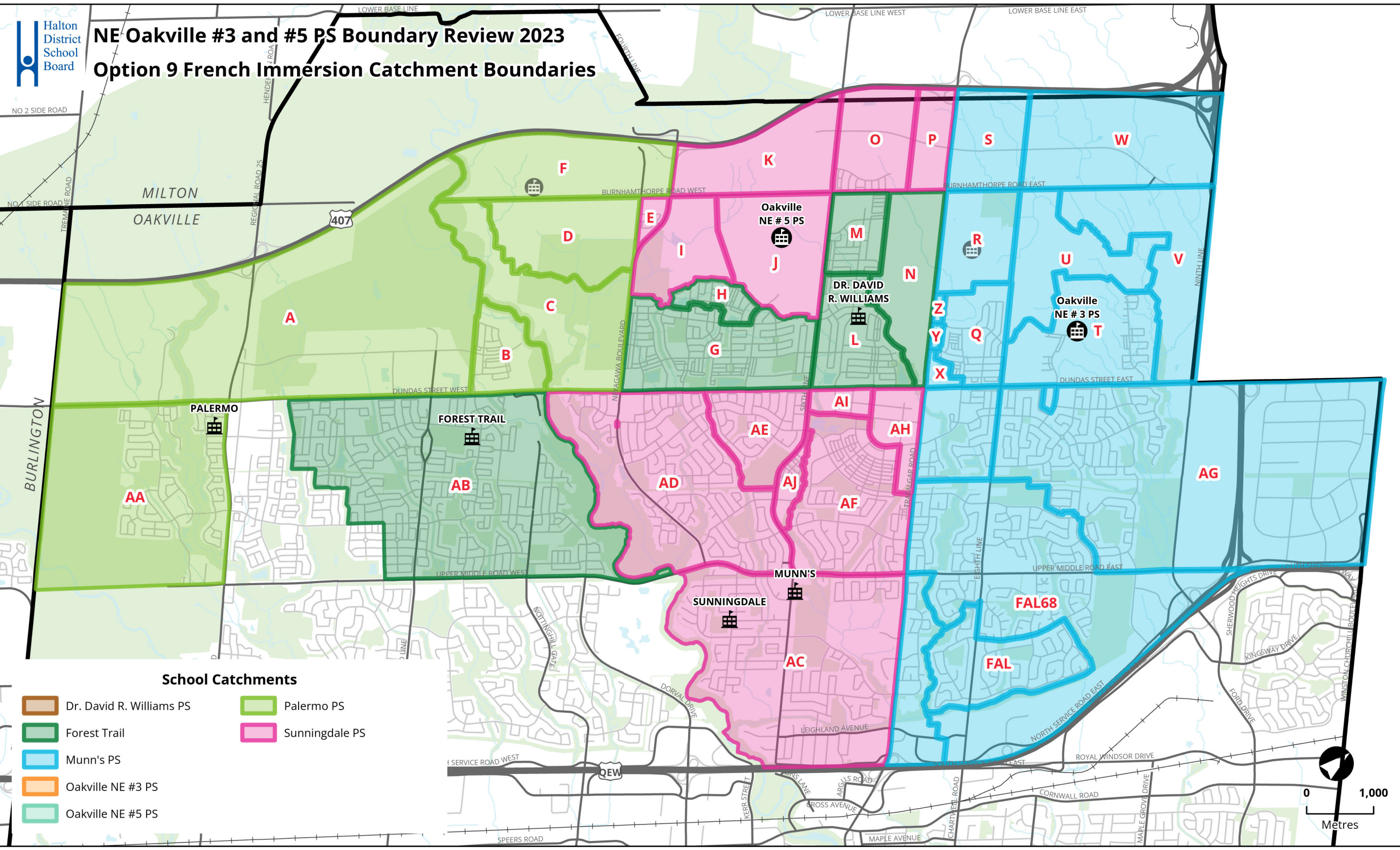
- Dr. David R. Williams PS
- Falgarwood PS
- Falgarwood PS (Grades 6-8)
- Oakville NE #3 PS
- Oakville NE #5 PS
- Oodenawi PS
- Palermo PS
- Post's Corners PS
- River Oaks PS





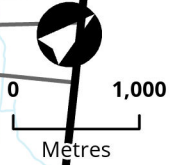
NE Oakville #3 and #5 PS Boundary Review 2023

Option 9 French Immersion Catchment Boundaries



School Catchments

- Dr. David R. Williams PS
- Munn's PS
- Oakville NE #3 PS
- Oakville NE #5 PS
- Palermo PS
- Sunningdale PS



Option 9

Created: Nov 17, 2023

[What you need to know about this option](#)

[Implementation](#)

School	Building Capacity	Portable	Total Capacity	Program	2023	2024	estimate	estimate	2027	2028	2029	estimate	estimate	Notes		
							ONE3 opens	ONES opens				ONE4 opens	ONE6 opens			
Post's Corners PS	600	Maximum : 12 Port: Cap: 276	876	ENG	831	876	797	784	767	733	725	720	716	714	School located south of Dundas St. JK-8 English, SPED programs. Impacted by development. Students redirected to Palermo PS have been placed back (2024).	
				FI	0	0	0	0	0	0	0	0	0	0		0
				SC-SPED	10	10	10	10	10	10	10	10	10	10		10
	Total	841	886	807	794	777	743	735	730	726	724	717				
	Percent Utilization				140%	148%	135%	132%	130%	124%	123%	122%	121%	121%		119%
	Available (+) / Shortage (-) of Pupil Places				-241	-286	-207	-194	-177	-143	-135	-130	-126	-124		-117
Estimate number of portables				12	12	9	8	8	6	6	6	5	5	5		
River Oaks PS	639	Maximum : 6 Port: Cap: 138	777	ENG	775	739	546	465	483	497	490	484	470	466	School located south of Dundas St. JK-8 English. No longer a holding school for north of Dundas St. No impact from development.	
				FI	0	0	0	0	0	0	0	0	0	0		0
				SC-SPED	0	0	0	0	0	0	0	0	0	0		0
	Total	775	739	546	465	483	497	490	484	470	466	455				
	Percent Utilization				121%	116%	85%	73%	76%	78%	77%	76%	74%	73%		71%
	Available (+) / Shortage (-) of Pupil Places				-136	-100	93	174	156	142	149	156	169	173		184
Estimate number of portables				6	4	0	0	0	0	0	0	0	0	0		
Sunningdale PS	613	Maximum : 10 Port: Cap: 230	843	ENG	0	0	0	0	0	0	0	0	0	0	School located south of Dundas St. 2-8 FI. FI school for Oakville NE # 5 PS. Impact from development.	
				FI	501	508	522	541	555	568	585	590	587	585		592
				SC-SPED	0	0	0	0	0	0	0	0	0	0		0
	Total	501	508	522	541	555	568	585	590	587	585	592				
	Percent Utilization				82%	83%	85%	88%	90%	93%	95%	96%	96%	95%		97%
	Available (+) / Shortage (-) of Pupil Places				112	105	91	72	58	45	29	23	26	29		21
Estimate number of portables				0	0	0	0	0	0	0	0	0	0	0		
Total Enrolment					6391	6640	6961	7329	7759	8122	8423	8799	9074	9328	9556	
Total Portables					55	48	41	36	38	45	51	64	75	85	95	

What you need to know about the option *a combination of Options 6 and X5

Enrolments are based on October 31, 2023 actual. SPS Scenario 1420 (high yields); updated since original release of projections that were based on September 11, 2023 enrolment Projections assumes redirected students (K-7) return to Post's Corners PS and Dr. David R. Williams PS from Palermo PS for 2024/25; assumes current Gr7 remains at Palermo PS All development timing are a best estimates. Development phasing have been updated as of July 2023

Number of Portables (2023) are actual numbers of portables required based on preliminary classroom usage and organization

Number of portables (2024+) are estimates based on Shortage of Pupil Place / 23 pupils

Oakville NE #4 ps opens 2030/31 (subject to change)

Oakville NE #6 ps opens 2033+ (subject to change)

*In 2023, Dr. David R. Williams PS has a maximum capacity of 1344 (24 portables). From 2024 and beyond, this school will have a maximum capacity of 1206 (18 portables)

Implementation

Oakville NE #3 PS opens 2025/26 as K-7 ENG school, Gr8 ENG added 2026/27

Oakville NE #5 PS opens 2026/27 as K-7 ENG school, Gr8 ENG added 2027/28

Post's Corners PS new boundary implemented starts when ONE #3 PS opens (2025/26)

The following schools have their new boundaries implemented starting 2024/25 with legacy exceptions for Gr8: Palermo, Sunningdale, Falgarwood (N of Dundas), River Oaks (N of Dundas)

GRADE 6-8 LEGACY EXEMPTION The following schools have their new boundaries implemented starting 2024/25: Dr. DRW, Forest Trail, Oodenawi and Sunningdale (students moving from Dr DRW)

GRADE 6-8 LEGACY EXEMPTION The following schools have their new boundaries implemented starting 2025/26: River Oaks (S of Dundas), Post's Corners (S of Dundas)

Dr. David R. Williams PS FI program is Gr6-8 in 2024/25; Gr7-8 in 2025/26; Gr8 in 2026/27