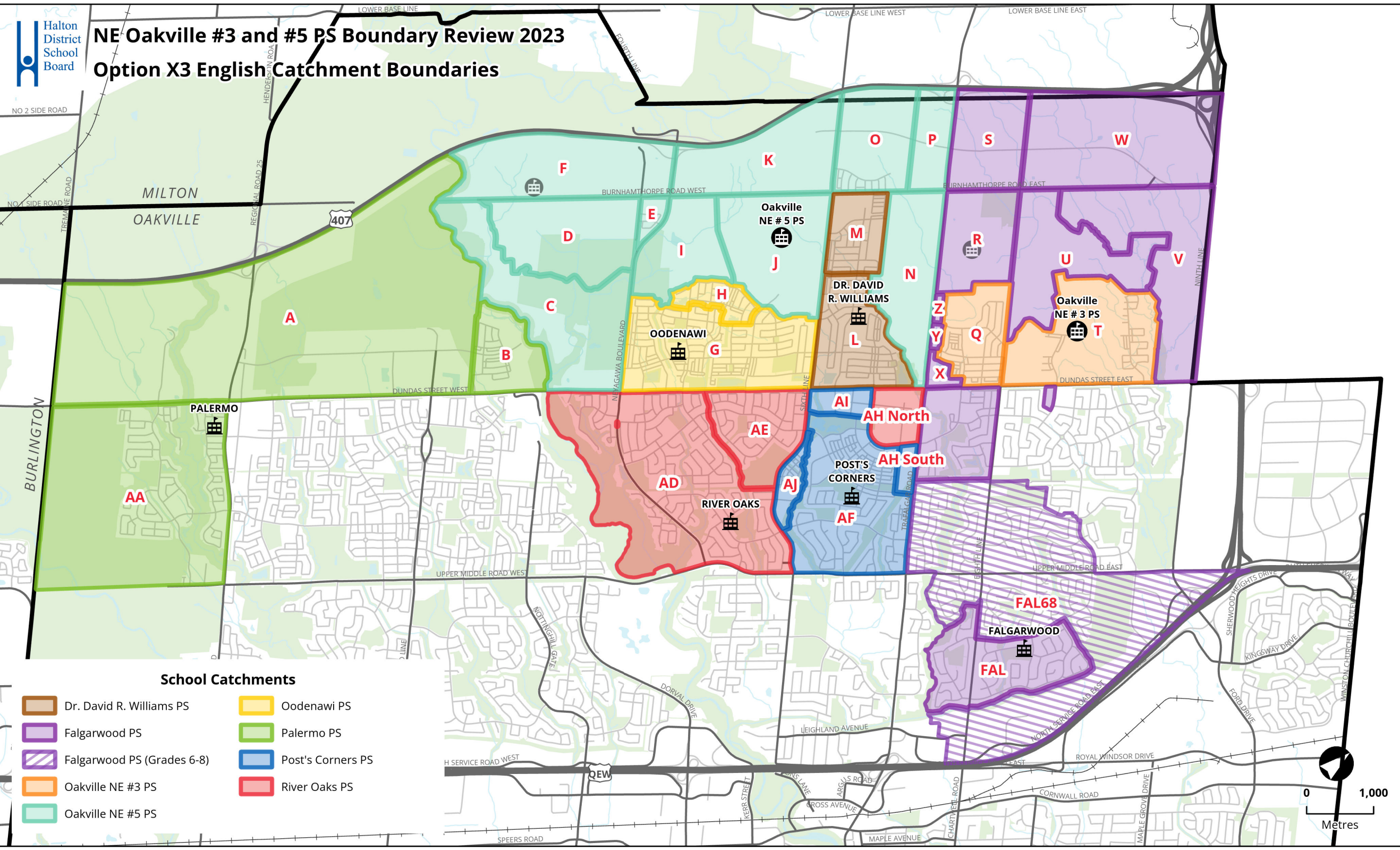




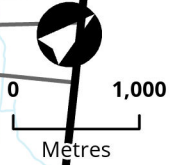
# NE Oakville #3 and #5 PS Boundary Review 2023

## Option X3 English Catchment Boundaries



### School Catchments

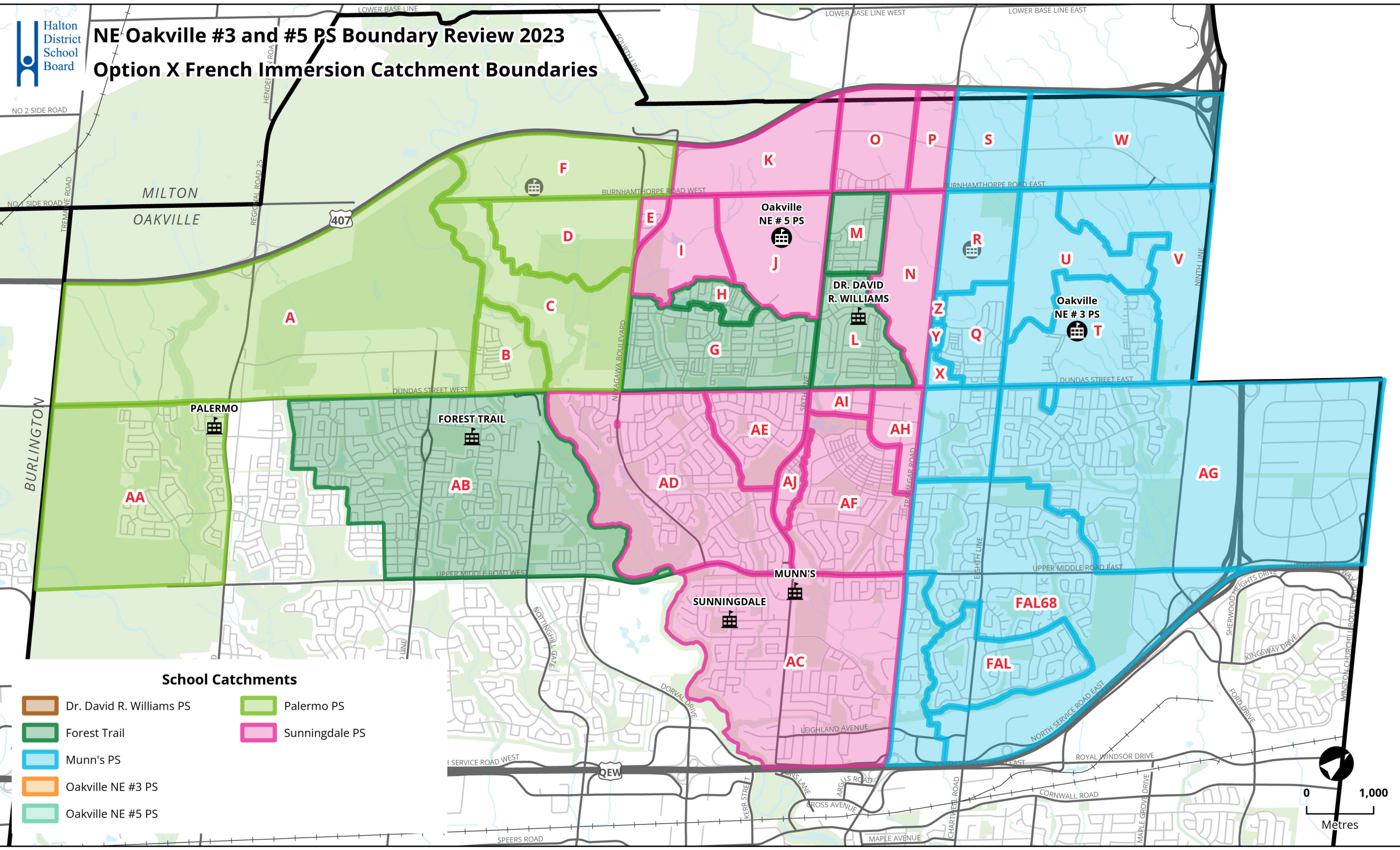
- Dr. David R. Williams PS
- Falgarwood PS
- Falgarwood PS (Grades 6-8)
- Oakville NE #3 PS
- Oakville NE #5 PS
- Oodenawi PS
- Palermo PS
- Post's Corners PS
- River Oaks PS





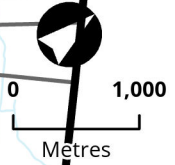
# NE Oakville #3 and #5 PS Boundary Review 2023

## Option X French Immersion Catchment Boundaries



### School Catchments

- Dr. David R. Williams PS
- Palermo PS
- Forest Trail
- Sunningdale PS
- Munn's PS
- Oakville NE #3 PS
- Oakville NE #5 PS





Option X3

Created: Nov 11, 2023

[What you need to know about this option](#)

[Implementation](#)

School	Building Capacity	Portable	Total Capacity	Program	2023	2024	ONE3 opens	ONE5 opens	2027	2028	2029	estimate ONE4 opens	2031	2032	estimate ONE6 opens	Notes	
					2025	2026	2030	2033									
Post's Corners PS	600	Maximum : 12	876	ENG	831	876	731	719	703	672	664	664	659	657	649	School located south of Dundas St. JK-8 English, SPED programs. Impacted by development. Students redirected to Palermo PS have been placed back (2024).	
				FI	0	0	0	0	0	0	0	0	0	0	0		0
		SC-SPED		10	10	10	10	10	10	10	10	10	10	10	10		10
		<b>Total</b>		<b>841</b>	<b>886</b>	<b>741</b>	<b>729</b>	<b>713</b>	<b>682</b>	<b>674</b>	<b>674</b>	<b>669</b>	<b>667</b>	<b>659</b>			
	<i>Percent Utilization</i>				140%	148%	123%	121%	119%	114%	112%	112%	111%	111%	110%		
<i>Available (+) / Shortage (-) of Pupil Places</i>				-241	-286	-141	-129	-113	-82	-74	-74	-69	-66	-59			
<i>Estimate number of portables</i>				12	12	6	6	5	4	3	3	3	3	3			
River Oaks PS	639	Maximum : 6	777	ENG	775	739	613	529	547	559	551	539	527	523	512	School located south of Dundas St. JK-8 English. Not a holding school for north of Dundas St. No impact from development.	
				FI	0	0	0	0	0	0	0	0	0	0	0		0
		SC-SPED		0	0	0	0	0	0	0	0	0	0	0	0		0
		<b>Total</b>		<b>775</b>	<b>739</b>	<b>613</b>	<b>529</b>	<b>547</b>	<b>559</b>	<b>551</b>	<b>539</b>	<b>527</b>	<b>523</b>	<b>512</b>			
	<i>Percent Utilization</i>				121%	116%	96%	83%	86%	87%	86%	84%	83%	82%	80%		
<i>Available (+) / Shortage (-) of Pupil Places</i>				-136	-100	27	110	92	81	88	100	112	116	127			
<i>Estimate number of portables</i>				6	4	0	0	0	0	0	0	0	0	0	0		
Sunningdale PS	613	Maximum : 10	843	ENG	0	0	0	0	0	0	0	0	0	0	0	School located south of Dundas St. 2-8 FI. FI school for ONE # 5 PS. Impact from development.	
				FI	501	508	524	545	562	578	599	608	606	605	614		
		SC-SPED		0	0	0	0	0	0	0	0	0	0	0	0		
		<b>Total</b>		<b>501</b>	<b>508</b>	<b>524</b>	<b>545</b>	<b>562</b>	<b>578</b>	<b>599</b>	<b>608</b>	<b>606</b>	<b>605</b>	<b>614</b>			
	<i>Percent Utilization</i>				82%	83%	85%	89%	92%	94%	98%	99%	99%	99%	100%		
<i>Available (+) / Shortage (-) of Pupil Places</i>				112	105	90	68	51	35	14	5	7	8	-1			
<i>Estimate number of portables</i>				0	0	0	0	0	0	0	0	0	0	0			
Total Enrolment					6391	6640	6961	7329	7759	8122	8423	8799	9074	9328	9556		
Total Portables					55	48	38	31	32	38	46	61	72	81	91		

[What you need to know about the option](#)

Enrolments are based on October 31, 2023 actual. SPS Scenario 1420 (high yields); updated since original release of projections that were based on September 11, 2023 enrolment

Projections assumes redirected students (K-7) return to Post's Corners PS and Dr. David R. Williams PS from Palermo PS for 2024/25; assumes current Gr7 remains at Palermo PS

All development timing are a best estimates. Development phasing have been updated as of July 2023

Number of Portables (2023) are actual numbers of portables required based on preliminary classroom usage and organization

Number of portables (2024+) are estimates based on Shortage of Pupil Place / 23 pupils

Oakville NE #4 ps opens 2030/31 (subject to change)

Oakville NE #6 ps opens 2033+ (subject to change)

\*In 2023, Dr. David R. Williams PS has a maximum capacity of 1344 (24 portables). From 2024 and beyond, this school will have a maximum capacity of 1206 (18 portables)

[Implementation](#)

Oakville NE #3 PS opens 2025/26 as K-7 ENG school, Gr8 ENG added 2026/27

Oakville NE #5 PS opens 2026/27 as K-7 ENG school, Gr8 ENG added 2027/28

Post's Corners PS new boundary implemented starts when ONE #3 PS opens (2025/26)

The following schools have their new boundaries implemented starting 2024/25 with legacy exceptions for Gr8: Palermo, Sunningdale, Falgarwood (N of Dundas), River Oaks (N of Dundas)

**GRADE 6-8 LEGACY EXEMPTION** The following schools have their new boundaries implemented starting 2024/25: Dr. DRW, Forest Trail, Oodenawi and Sunningdale (students moving from Dr DRW)

**GRADE 6-8 LEGACY EXEMPTION** The following schools have their new boundaries implemented starting 2025/26: River Oaks (S of Dundas), Post's Corners (S of Dundas)

Dr. David R. Williams PS FI program is Gr6-8 in 2024/25; Gr7-8 in 2025/26; Gr8 in 2026/27