



Halton  
District  
School  
Board

# Aldershot Grades 7 & 8 FI Boundary Review

**BRSC meeting #1 - Feb. 23, 2024  
@3pm (Google Meet)**





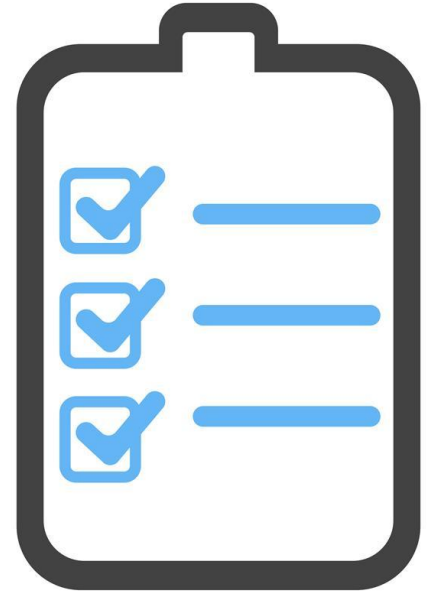
# Honouring the Land and Territory

We begin by acknowledging the land and our responsibility to care for and respect all that provides us with life. This land upon which HDSB is situated is on the ancestral, treaty and title lands of the Anishinaabek Ojibwe Michizaagiig Nation, now known as the Mississaugas of the Credit. Michizaagiig territory in the past and present continues to host both Indigenous and non-Indigenous peoples.

The HDSB is committed to continuous knowledge building with respect to actions that address and resolve the ongoing impacts of colonialism. We do this by learning and understanding the true history, treaty obligations, duties and responsibilities and Indigenous Rights while actively maintaining mutually beneficial relationships and collectively respecting and caring for the land.

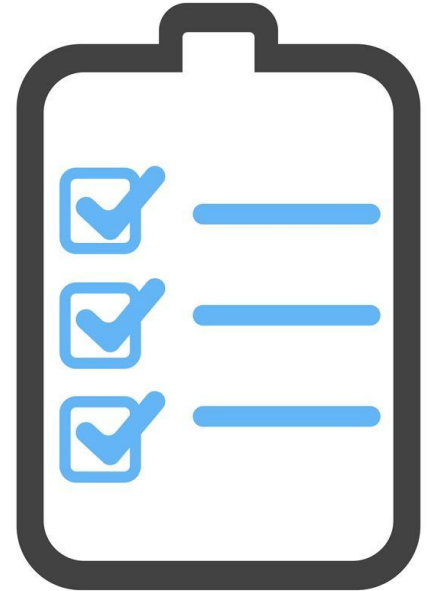
# Agenda

1. Objectives
2. Introduction of Boundary Review Steering Committee (BRSC)
3. Aldershot FI Boundary Study Resolution
4. Administration Policy Review
5. Communication Plan
6. Review of the Study Area
7. Review of the Survey and Option 1
8. Questions & Feedback



# Objectives for today's meeting

1. [Administration Policy](#) Review
2. Determine boundary review Pathway (1 or 2)
3. Determine schools involved (Which school communities should participate? Who is impacted?)
4. Review Survey Results
5. Review Option 1 and additional information for a recommendation



# Introduction of Boundary Review Steering Committee (BRSC) members

Family of Schools Superintendent, of all affected areas

Nick Frankovich, Colette Ruddock

Trustees of affected areas

Robbie Brydon

Family of Schools Superintendent, of a non-affected area

Jennifer Fowler

Trustee, on a non-affected area

Xin Yi Zhang

*(Appointed by Chair of the Board and Director)*

Planning Department

Frederick Thibeault, Michelle  
D'Aguiar, Mitchell Gundy

Halton Student Transportation Services

Maryann Rimac

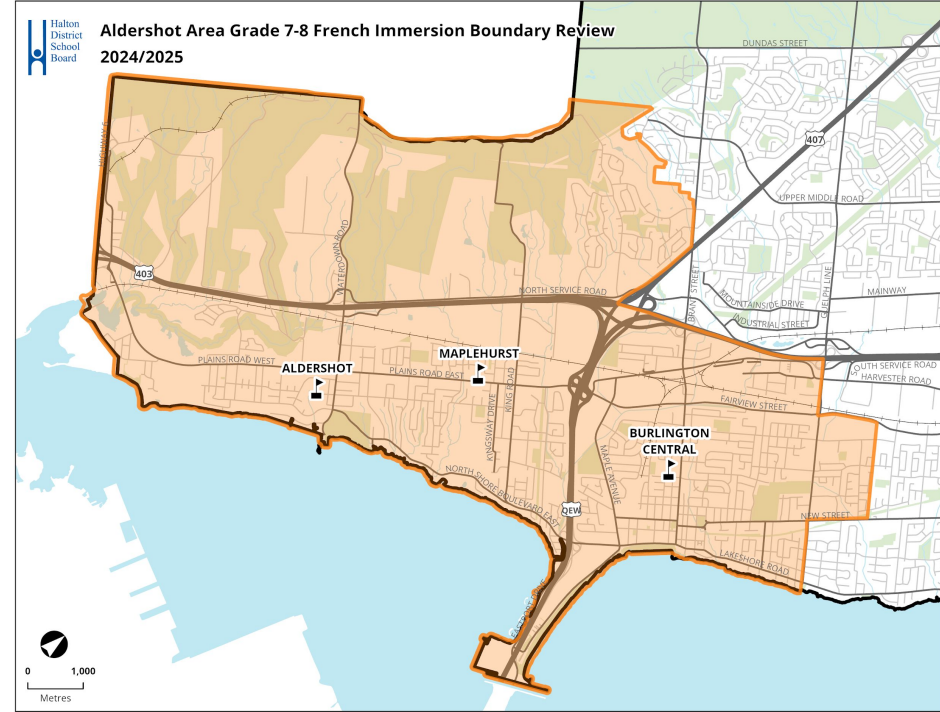
# Aldershot FI Boundary Study Resolution

## Background:

At the February 7, 2024 Board meeting, HDSB Trustees approved a motion to initiate the process to review the Burlington ERA 101 French Immersion Boundaries. ([link to report 24018-link to map](#)).

## Board Report Resolution:

**BE IT RESOLVED THAT**, the Halton District School Board complete a boundary review for ERA 101 Aldershot (formerly ERA 100) with the objective of reducing the number of moves experienced by French immersion students in Aldershot;



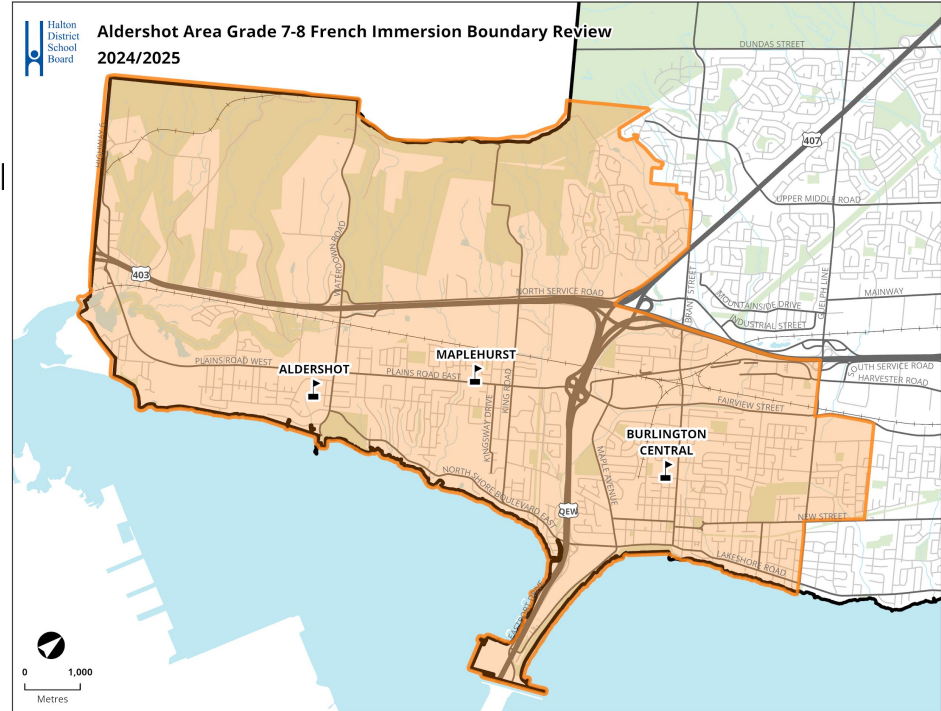
# Administrative Procedure Review

## Purpose of Boundary Review

The mandate of the Boundary Review will be to:

1. Review the current 3-school pathway of FI students in the Aldershot area.
2. Review an alternate option 2-school pathway for students in Aldershot area.
3. Review the results of a parent survey
4. Make a recommendation.

**Proposed effective date: September 2024**



# Administrative Procedure Review

## Boundary Review Steering Committee Mandate

1. Determine and communicate which schools are part of the Boundary Review process
2. Make the determination as to which consultation process pathway will be utilized. The options are:
  - a. **PATHWAY 1** - Consult with the community through Public Information Meetings regarding the Boundary Review Committee's preferred option(s); OR
  - b. **PATHWAY 2** - Inform the community of the recommended option(s).
3. Generate the initial boundary options for consideration by a larger Boundary Review Committee (BRC).
4. On behalf of the Boundary Review Committee, recommend preferred option(s) to Administrative Council and the Director.





# Administrative Procedure Review

## Actions for BRSC to consider to advance next steps:

1. Make the determination as to which consultation process pathway will be utilized.

### Staff Recommendation:

**PATHWAY 2** - Informing the Community of Recommended Option for the following reasons:

- Limited to one option for review.
  - Limited impact to schools.
  - Community consultation occurred
2. Determine and communicate which schools are part of the Boundary Review Process.

### Staff Recommendation:

- Maplehurst PS - ERA 101
- Aldershot Elem - ERA 101
- Burlington Central Elem - ERA 101



# Administrative Procedure Review

## Actions for BRSC to consider to advance next steps (con't):

3. Consideration in establishing guidelines in the development of options.

**Staff Recommendation (note these are only guidelines, the choice of representatives are ultimately determined by school administration):**

- FI program viability
- Student experience in the number of moves required to remain in the FI program.



# Administrative Procedure Review

## Boundary Review Process Pathway #2

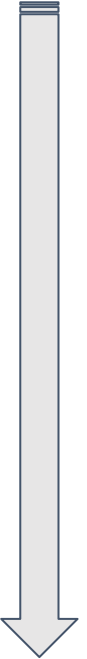
### *STEP 1, 2 and 3*

Director requests approval of Trustees to initiate a boundary review. The BRSC consisting of Board staff and Trustees. Inform the community. Confirm pathway, confirm schools, review initial boundary option and schedule additional meetings as required.

### *STEP 4 and 5*

Request modifications, or additional options for consideration. Develop a recommendation to present to the Director who will consult with Admin Counsel.

START



# Administrative Procedure Review

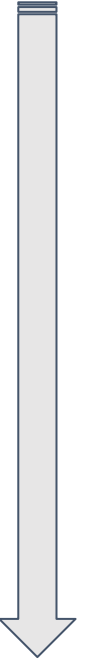
## Boundary Review Process Pathway #2

### *STEP 6*

The Director recommendation to be presented to the Board of Trustees for consideration and approval.

### *STEP 7*

Delegations to the Board occur within the timelines for the boundary review process. Board of Trustees make the final decision.



# Administrative Procedure Review

## Boundary Review Process

### *STEP 7*

The Integration Committee will plan for and implement the positive integration of students and staff affected by the boundary decision and relocation into their new school environment. The Family of Schools Superintendent of Education would act as the Chair of the Integration Committee



**END**

# Administrative Procedure Review

## Boundary Review Process Timeline (Draft)

Item	Targeted Date/Week
Notification of Boundary Review	February 14, 2024
BRSC meeting #1	February 23, 2024 (virtual)
Presentation to Admin Council, Notification of Pathway and Recommendation	February 26, 2024
Report Available For Review	March 1, 2024
Presentation to the Board of Trustees for Decision	March 6, 2024
Notification of Decision	March 7, 2024

# Communication Plan

## Communication Platforms

### Boundary study webpage:

Dedicated website where all public information pertaining to the Boundary Review will be posted, such as FAQs, Meeting Minutes, Options, Central Communications. Currently live on HDSB website ([link](#)).

Email: [plan@hdsb.ca](mailto:plan@hdsb.ca)

### School Messenger Communication:

During the study process, notices sent to affected school communities regarding process and proposed solutions.

### Aldershot FI Boundary Review

Home / Schools / School Boundary Reviews / Current Boundary Reviews / Aldershot FI Boundary Review /

Share

#### School Boundary Reviews

Boundary Review Frequently Asked Questions

#### Current Boundary Reviews

• Aldershot FI Boundary Review

• Glenview-Maplehurst Boundary Review

• Oakville NE #3 and #5 ps Boundary Review

• South Georgetown Boundary Review

Future (Planned) Boundary Reviews

Past Boundary Reviews

Adult, Alternative and Continuing Education

Distribution of Materials to Schools

Find My Local School

Information Technology in Schools

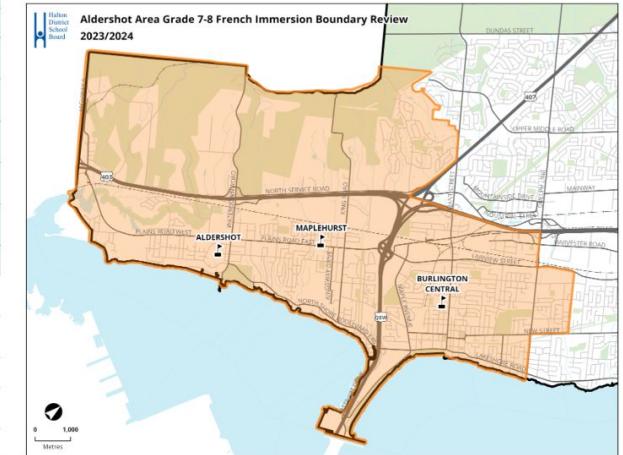
Our Schools

PA Days HDSB 2023-2024

Program Accommodation Statistics

#### About the Boundary Review

At the February 7, 2024 Board meeting, HDSB Trustees approved a motion to initiate the process to review the Burlington – ERA 101 (formerly ERA 100) – French Immersion Boundaries.



**BE IT RESOLVED THAT** the Halton District School Board complete a boundary review for ERA 101 Aldershot (formerly ERA 100) with the objective of reducing the number of moves experienced by French immersion students in Aldershot;

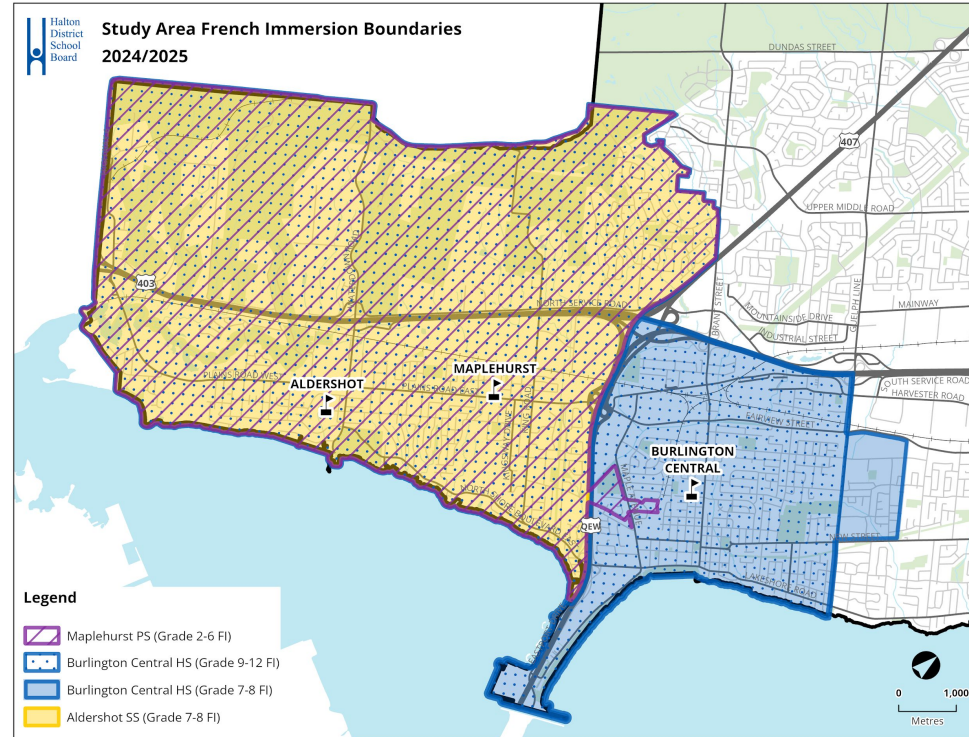
# Boundary Review Study Area

## Profile of the Study Area

- The study area is the Aldershot area with the majority of lands west of the QEW. (ERA 101) The Grade 7 and 8 FI program catchment area to be reviewed.
- Schools Involved in study
  - Aldershot Elementary FI
  - Burlington Central Elementary (FI)
  - Maplehurst PS FI (indirectly)



French Immersion Program





# “How to Read” Option Sheets (a sample)

School	OTG	Portable	Total Capacity	Program	2020	2021	2022	2023	2024	2025	2026	2027	2028	2029	2030	Notes
Public School	536	Maximum: 8	720	ENG	502	525	578	669	758	863	950	1065	1196	1328	1445	
				FI	0	0	0	0	0	0	0	0	0	0	0	
				SC-SPED	17	17	17	17	17	17	17	17	17	17	17	
				<b>Total</b>	<b>519</b>	<b>542</b>	<b>595</b>	<b>686</b>	<b>775</b>	<b>880</b>	<b>967</b>	<b>1082</b>	<b>1213</b>	<b>1345</b>	<b>1462</b>	
	Percent Utilization				97%	101%	111%	128%	145%	164%	180%	202%	226%	251%	273%	
	Available (+) / Shortage (-) of Pupil Places				17	-6	-59	-150	-239	-344	-431	-546	-677	-809	-926	
	Estimate number of portables				-1	0	3	7	10	15	19	24	29	35	40	

## Definition

**OTG** On The Ground capacity - the provincially recognized pupil place capacity of the school building, which may include additions or alteration to the the building

**Portable Maximum** Maximum number of portables allowed on site

**Port. Cap.** Portable Capacity which is equal to the Portable Maximum numbers multiplied by 23 students


**Total Capacity** OTG plus Port. Cap.

**ENG** English program


**FI** French Immersion program

**SC-SPED** self-contained special education program

**Total** Total Enrolment

 below 100% OTG utilization (portables not needed)

 above 100% OTG utilization (portables are needed)

 above Total Capacity utilization (number of portables needed are above the maximum number allowed on site)

**Percent Utilization** Total divided by OTG

**Available (+) / Shortage (-) of Pupil Places** Number of available (+) or shortage (-) of pupil places, OTG minus Total

**Estimate number of portables** (Total minus OTG)/23

*Note:* (-) number of portables can be assumed that zero portables will be needed

an estimate since actual number of portables that may be required depends upon classroom organization

# “How to Read” Option Chart (a sample)

**LINK**

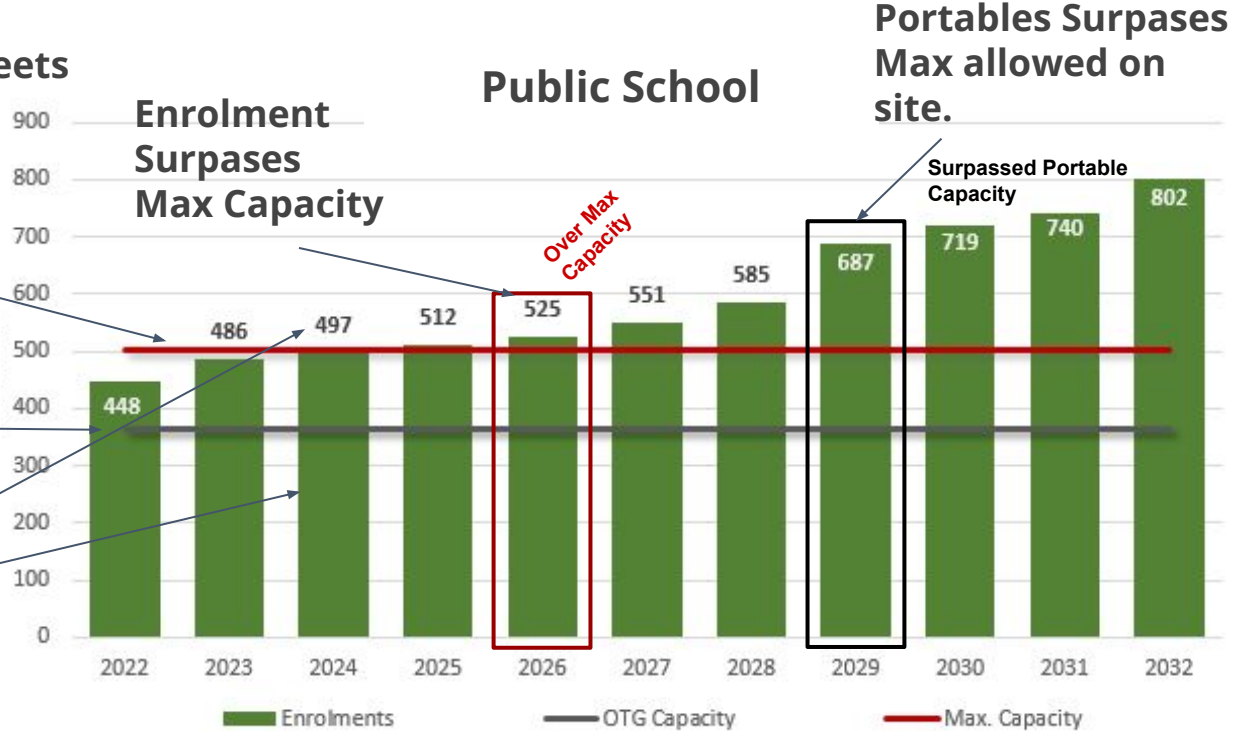
← Link to Option Sheets

Max Capacity  
(OTG + Portables)

On-The-Ground  
(OTG) Capacity

Total Enrolment

Portable Count



Portables Surpluses  
Max allowed on  
site.

Surpassed Portable  
Capacity

Over Max  
Capacity

# Aldershot Elementary & HS



## School Stats

OTG Capacity: 954  
 OTG Max Capacity: 1166  
 Max # of Portables: 10  
 Utilization (2023/24): 63%, 133%  
 Max # of Classrooms: 15(E), 28(S)  
 2023/24 Classrooms: 15(E), 28(S)

## Programs

ENG	FI	ISTEM	SHSM
7 - 12	7 - 8		

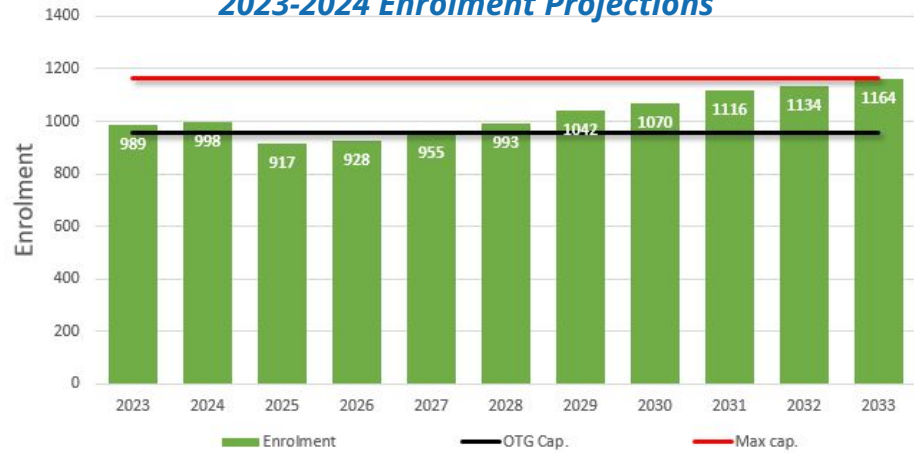
## Why is my school involved?

Students in the Aldershot area attend three schools: Maplehurst PS, Aldershot Elem, and Burlington Central PS for FI program. FI was phased out from Aldershot HS starting in September 2020. The grade 9 to 12 program was failed to meet the minimum threshold for a successful FI program.

## Current Accommodation Scenario:

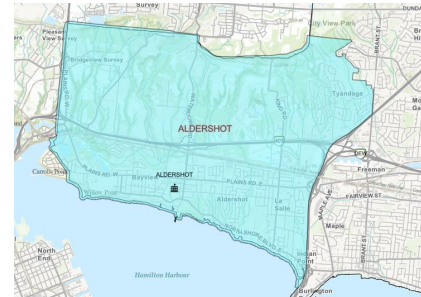
Aldershot Is a 7 to 12 school located south of Plains Road in the Aldershot community. French Immersion is offered for grades 7 & 8. FI classes are expected to have 15 or less students until 2030. Secondary students are directed to Burlington Central HS. Historically, more FI students elected the ISTEM program then attend the FI program.

## 2023-2024 Enrolment Projections



2	2	0	0	0	2	4	5	7	8	9
---	---	---	---	---	---	---	---	---	---	---

## Current 7 & 8 French Immersion Attendance Areas (2023/2024)



# Burlington Central Elem & HS



### School Stats

OTG Capacity: 1271  
 OTG Max Capacity: 1443  
 Max # of Portables: 8  
 Utilization (2023/24): 65%, 95%  
 Max # of Classrooms: 16(E), 43(S)  
 2023/24 Classrooms: 16(E), 43(S)

### Programs

ENG 7-12
FI 7-12
ESL
SHSM
  
IB

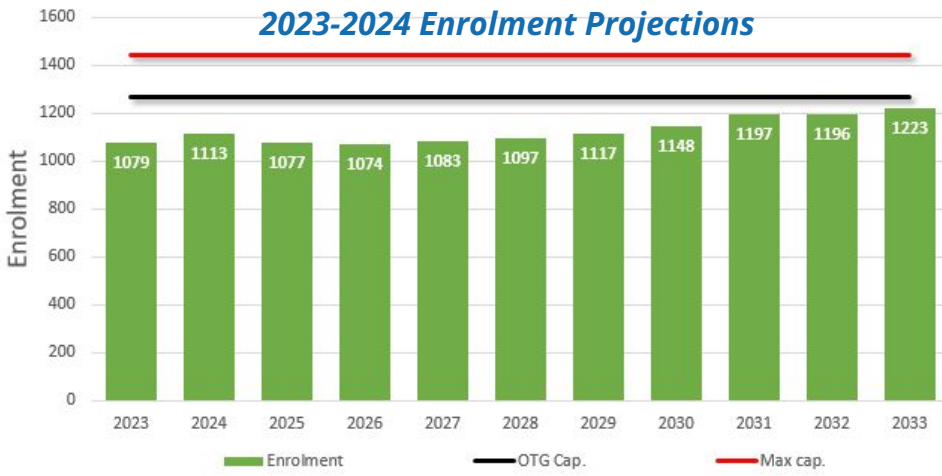
### Why is my school involved?

Burlington Central offers a 7 to 12 FI Grade 9 to 12 students in FI are transported to Burlington Central PS from the Aldershot area.

### Current Accommodation Scenario:

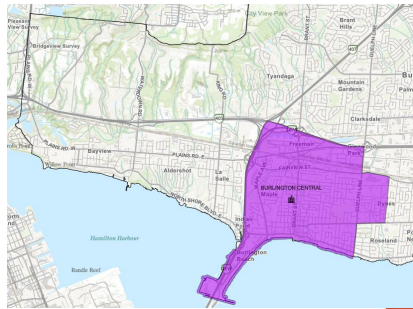
A Grade 7-12 school located downtown Burlington. French Immersion is offer for grades 7 to 12. Elementary FI classes are are projected to remain above 20 students. The school is under utilized. The FI program cannot be maintained at both schools.

### 2023-2024 Enrolment Projections



0	0	0	0	0	0	0	0	0	0
---	---	---	---	---	---	---	---	---	---

### Current 7 & 8 French Immersion Attendance Area (2023/2024)



# Aldershot Elementary & HS

2023-2024 Status Quo



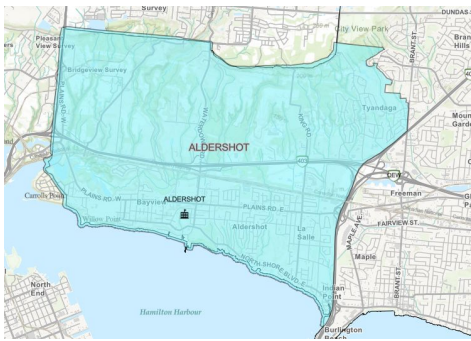
2	2	0	0	0	2	4	5	7	8	9
---	---	---	---	---	---	---	---	---	---	---

2023-2024 Option 1



2	1	0	0	0	0	2	3	5	6	7
---	---	---	---	---	---	---	---	---	---	---

**Current 7 & 8  
French Immersion  
Attendance Areas  
(2023/2024)**



**French Immersion  
not offered at  
Aldershot Elementary  
for grades 7 & 8.**

[LINK](#)

[LINK](#)



# Burlington Central Elem & HS

2023-2024 Status Quo



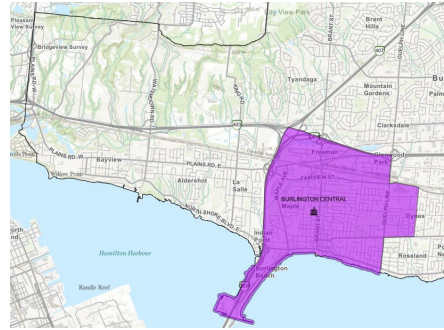
0	0	0	0	0	0	0	0	0	0	0
---	---	---	---	---	---	---	---	---	---	---

2023-2024 Option 1

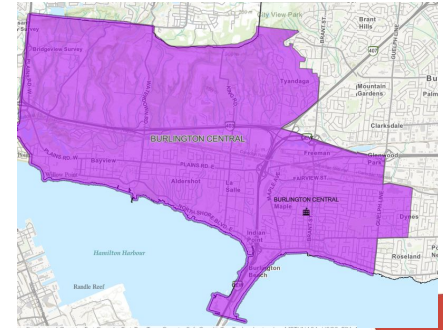


0	0	0	0	0	0	0	0	0	0	0
---	---	---	---	---	---	---	---	---	---	---

Current 7 & 8 French Immersion Attendance Areas (2023/2024)



Option1 - 7 & 8 French Immersion Attendance Areas (2024/2025)



[LINK](#)

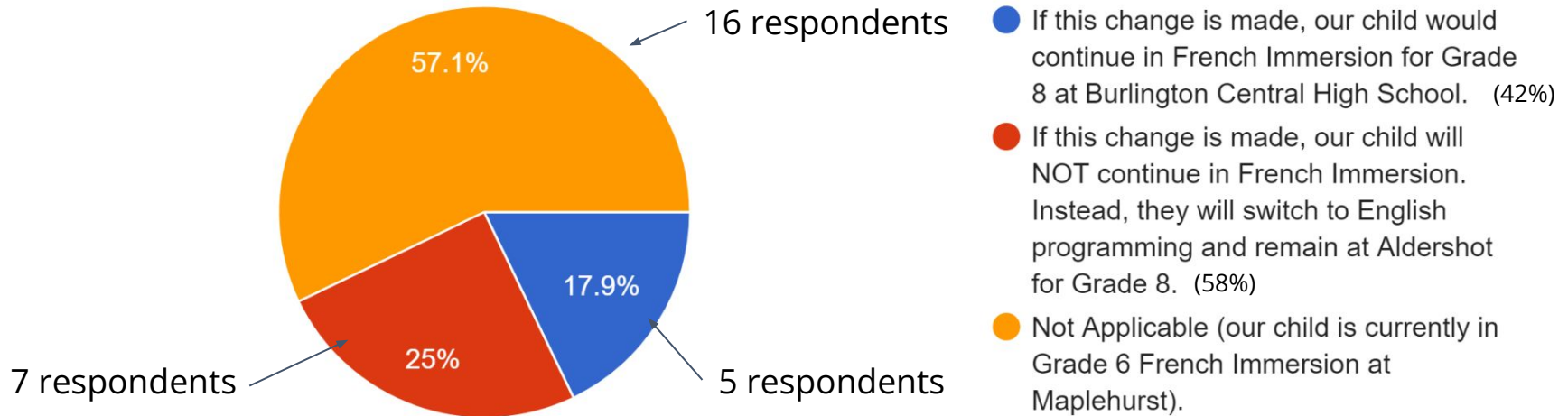
[LINK](#)

# Community Survey Results

**This section is for families of students presently in Grade 7 French Immersion at Aldershot School. Please check "Not Applicable" if your student is in Grade 6.**

If the HDSB proceeds with this change, the students currently in Grade 7 French Immersion at Aldershot would move to Burlington Central High School to continue in French Immersion for Grade 8-12. This is one year earlier than the process we presently follow. Knowing this information, please select the option that best describes what you and your child would select for their Grade 8 year.

28 responses

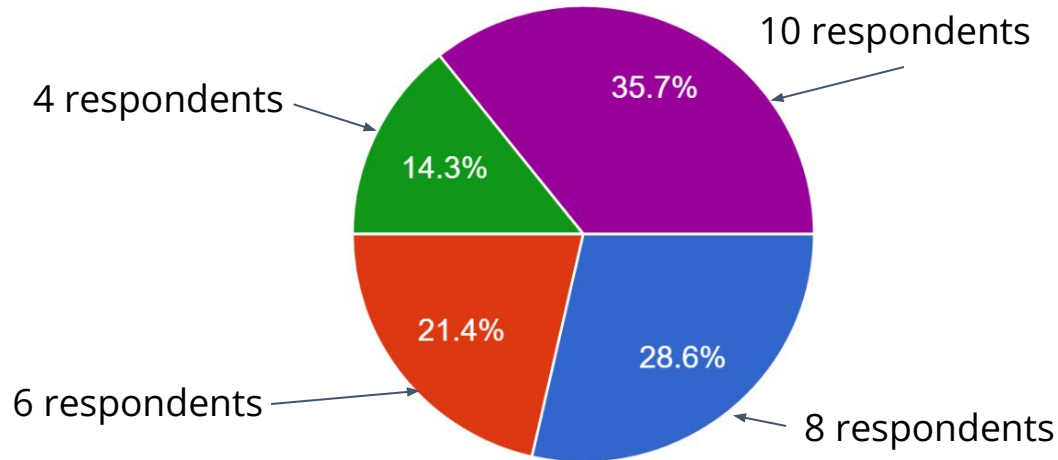


# Community Survey Results

**This section is for families of students presently in Grade 6 French Immersion at Maplehurst.  
Please check "Not Applicable" if your child is in Grade 7.**

Which statement best describes the plans you have for your child as they transition to Grade 7 in September 2024?

28 responses



- My child is continuing in French Immersion regardless of location (Aldershot or Burlington Central). (44%)
- My child is continuing in French Immersion if the program continues to be offered at Aldershot. (33%)
- My child is continuing in French Immersion if the program location is moved to Burlington Central.
- My child is not continuing in French Immersion. (22%)
- Not Applicable (our child is currently in Grade 7 French Immersion at Aldershot)



# Community Survey Results

Please add any comments or questions you have regarding this survey.

11 Responses

Themes from responses:

- Would prefer minimal number of transitions.
- Lower travel time if possible.
- Exempt Grade 7 from changes.
- Would like to see 7-12 F.I. at Aldershot.
- Preference for FI at Central.
- Worried about the number of transition from FI to iSTEM.

# Impact to Halton Student Transportation Services

## Transportation Eligibility

24 students (grades 7 & 8) reside in the Option 1 boundary area for redirections

### ***2023/2024 Transportation provided to Aldershot:***

- 19 students eligible for transportation
- 5 students not eligible for transportation

### ***2024/2025 Situation Transportation provided to Burlington Central:***

- 41 students eligible for transportation

### ***Route Status under Option 1:***

- Status Quo in the number of vehicles to Burlington Central HS
- Removal of one vehicle to Aldershot HS



**HALTON**  
Student Transportation Services

Serving the Burlington, Halton Hills, Milton and Oakville Communities

# Option Worksheets & Resources

## Additional Resources:

1. Maps and projections can be found in more detail in the Boundary Study Google Shared Drive
2. Option Worksheets
  - a. [Status Quo Grades - 7 -12](#)
  - b. [Option 1 - Grades 7 - 12](#)
3. [School Boundary Map App](#)
4. Boundary review criteria to consider
  - a. Viability of Programs
  - b. Student Experience

